

Code: PP-24/RJ

PATCH PANEL RJ-45 **PP-24/RJ**

Net: **16.37 EUR** Gross: **20.14 EUR**

The device is structured cabling termination for UTP cat.5 cables. The device is mounted to RACK 19" cabinet.



SPECIFICATION

Width:	19 "
Height:	1 U
Number of ports:	24 pcs
Main features:	<ul style="list-style-type: none">• It is compatible with Category 5e• Twisted-pair cable mounting using the Krone Impact Tool
Color:	Black
Weight:	1 kg
Dimensions:	483 x 44 x 33 mm
Guarantee:	3 years

PRESENTATION

Front view:

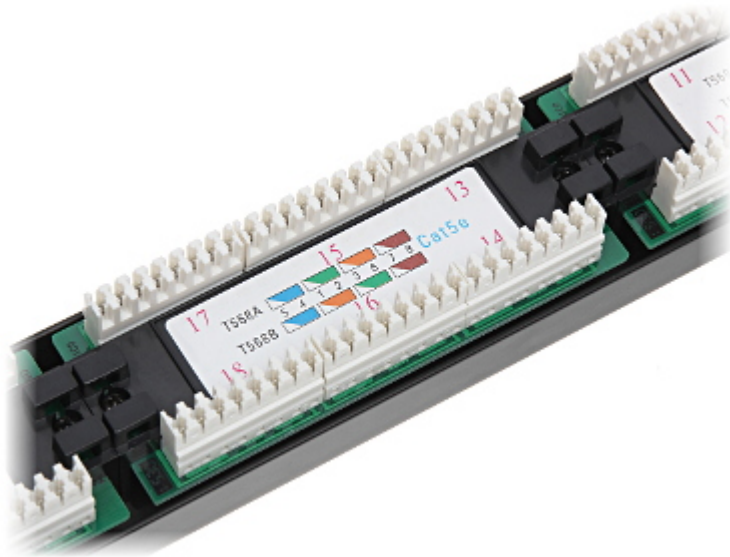


Top view:



in the back:





In the kit:

