

Code: PP-48/RJ/6C

PATCH PANEL RJ-45 **PP-48/RJ/6C**

Net: **50.38 EUR** Gross: **61.97 EUR**

The device is structured cabling termination for UTP cat. 6 cables. The device is mounted to RACK 19" cabinet.



SPECIFICATION

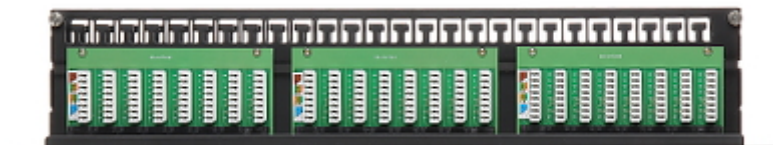
Width:	19 "
Height:	1 U
Number of ports:	48 pcs
Main features:	<ul style="list-style-type: none">• It is compatible with Category 6• Twisted-pair cable mounting using the Krone Impact Tool• On the device mainboard there are holes to cables mounting using cable ties
Color:	Black
Weight:	1.35 kg
Dimensions:	483 x 44 x 89 mm
Guarantee:	3 years

PRESENTATION

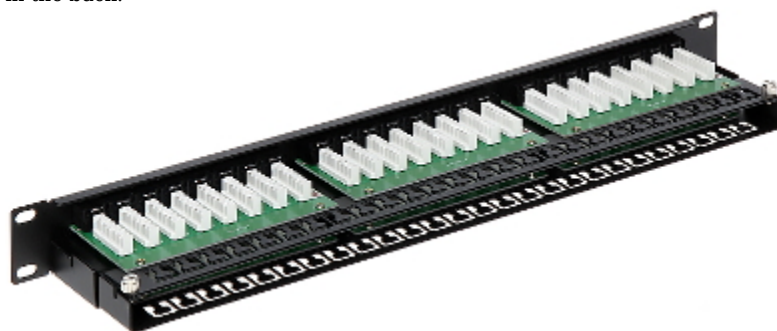
Front view:



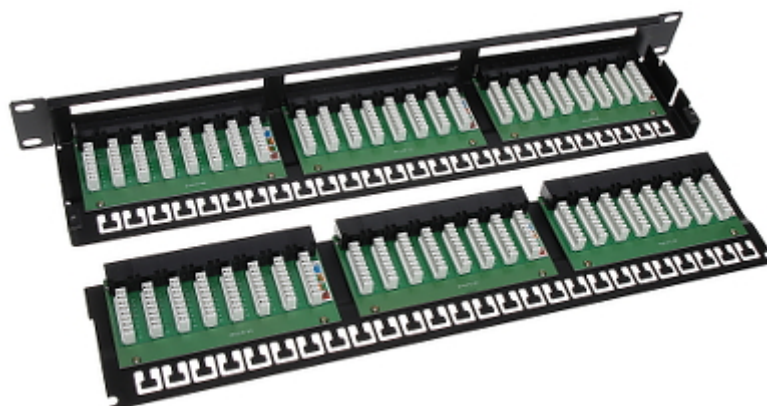
Top view:



in the back:



Patch panel after removing the upper plate:



In the kit:

