

Code: BCS-DMQE2200IR3-G

AHD, HD-CVI, HD-TVI, PAL CAMERA **BCS-DMQE2200IR3-G** - 1080p 2.8 mm

Net: **41.16 EUR** Gross: **50.63 EUR**

Megapixel camera with 1/2.9" CMOS sensor and AHD / HD-CVI / HD-TVI / CVBS.

The AHD / HD-CVI / HD-TVI interface allows to transmission of analog video signal via coaxial cable in max. 8 Mpx (4K UHD) resolution. During transmission there are no delays and is maintained the original, high quality image.

In the case of video transmission using a twisted pair cable and matching transformers (balun), be aware of the possibility of signal reflections and interfering signals.



SPECIFICATION

Standard:	AHD / HD-CVI / HD-TVI / CVBS
Sensor:	1/2.9 " Progressive Scan CMOS
Matrix size:	2.1 Mpx
Resolution:	1920 x 1080 - 1080p 1280 x 720 - 720p
Range of IR illumination:	30 m
IR illuminator power adjustment:	Automatic
Lens:	2.8 mm, F1.2
View angle:	• 91 ° (manufacturer data) • 105 ° (our tests result)
S/N ratio:	50 dB
Video output:	AHD / HD-CVI / HD-TVI / CVBS, 1 Vpp / 75 Ω
OSD menu:	✓
Main features:	• D-WDR - Wide Dynamic Range • 3D-DNR - Digital Noise Reduction • BLC - configurable Back Light Compensation • ICR - Movable InfraRed filter • AGC - Automatic Gain Control • Auto White Balance • Mirror - Mirror image • Configurable Privacy Zones
Power supply:	12 V DC / 670 mA
Power consumption:	< 8 W
Housing:	Dome, Metal

DELTA-OPTI Monika Matysiak; <https://www.delta.poznan.pl>
POL; 60-713 Poznań; Graniczna 10
e-mail: delta-opti@delta.poznan.pl; tel: +(48) 61 864 69 60

Color:	Black
"Index of Protection":	IP66
Vandal-proof:	—
Operation temp:	-20 °C ... 60 °C
Weight:	0.28 kg
Dimensions:	Ø 94 x 80 mm
Manufacturer / Brand:	BCS
Guarantee:	3 years

PRESENTATION

Camera is out from clamping ring:



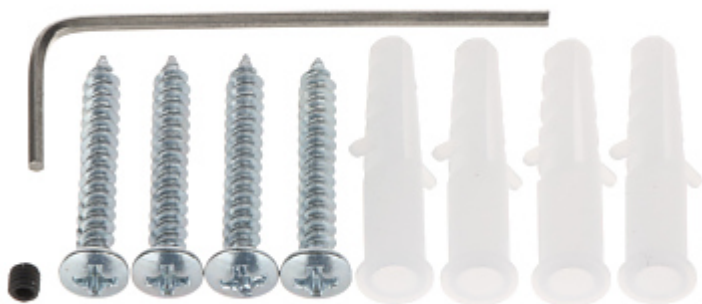
Dimensions:



Configuration switches:



In the kit:



OUR TESTS

AHD:

Camera image at artificial illumination (about 30Lux):



Camera image at night conditions with internal built-in IR illuminator on:



Camera image at direct strong light opposite to camera:



HD-CVI:

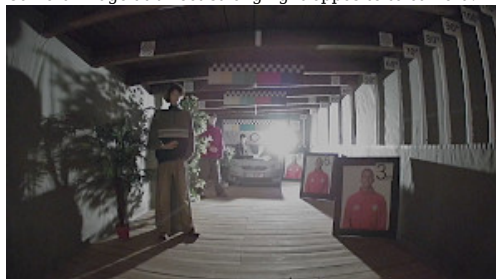
Camera image at artificial illumination (about 30Lux):



Camera image at night conditions with internal built-in IR illuminator on:



Camera image at direct strong light opposite to camera:



HD-TVI:

Camera image at artificial illumination (about 30Lux):



Camera image at night conditions with internal built-in IR illuminator on:



Camera image at direct strong light opposite to camera:

