

Code: DS-2CE56D8T-IT3ZF(2.7-13.5MM)

AHD, HD-CVI, HD-TVI, CVBS CAMERA **DS-2CE56D8T-IT3ZF(2.7-13.5MM)** - 1080p Hikvision

Net: **126.71 EUR** Gross: **155.85 EUR**

Megapixel camera with Progressive scan CMOS sensor and AHD / HD-CVI / HD-TVI / CVBS. The change of the AHD / HD-CVI / HD-TVI / CVBS standard is done with the corresponding button by keeping it pressed for approx. 5 seconds.

The AHD / HD-CVI / HD-TVI interface allows to transmission of analog video signal via coaxial cable in max. 8 Mpx (4K UHD) resolution. During transmission there are no delays and is maintained the original, high quality image.

Housing construction allows to mount the camera to the ceiling and the wall (image is right oriented in both cases).

In the case of video transmission using a twisted pair cable and matching transformers (balun), be aware of the possibility of signal reflections and interfering signals. Camera is according to IP67 Index of Protection norm.



SPECIFICATION

Standard:	AHD, HD-CVI, HD-TVI, CVBS
Sensor:	Progressive Scan CMOS
Matrix size:	2.1 Mpx
Resolution:	1920 x 1080 - 1080p , 960 x 576 - 960H, PAL
Range of IR illumination:	60 m
IR illuminator power adjustment:	Automatic
Lens:	2.7 ... 13.5 mm - Motozoom
View angle:	• 103 ° ... 32 ° (manufacturer data) • 90 ° ... 32 ° (our tests result)
Video output:	1 Vpp / 75 Ω - AHD / HD-CVI / HD-TVI / CVBS - selectable by switch
Main features:	<ul style="list-style-type: none">• Motozoom lens, AutoFocus• WDR ≥ 130 dB - Wide Dynamic Range• 2D-DNR, 3D-DNR - Digital Noise Reduction• EXIR - high-efficiency infrared LEDs technology, which evenly covers the whole plan of both central vantage points of the scene as well as the corners• BLC/HLC - Back Light / High Light Compensation• AGC - Automatic Gain Control• ICR - Movable InfraRed filter• Motion Detection - max. 4 zones• Privacy zones - max. 4• Mirror - Mirror image• Sharpness - sharper image outlines

DELTA-OPTI Monika Matysiak; <https://www.delta.poznan.pl>
POL; 60-713 Poznań; Graniczna 10
e-mail: delta-opti@delta.poznan.pl; tel: +(48) 61 864 69 60

OSD menu:	✓
Power supply:	12 V DC / 620 mA
Power consumption:	≤ 7.5 W
Housing:	Dome, Metal
Color:	White
"Index of Protection":	IP67
Operation temp:	-40 °C ... 60 °C
Weight:	0.59 kg
Dimensions:	134 x 111 mm
Supported languages:	English
Country of origin:	China
Manufacturer / Brand:	Hikvision
SAP Code:	300612856
Guarantee:	3 years

PRESENTATION

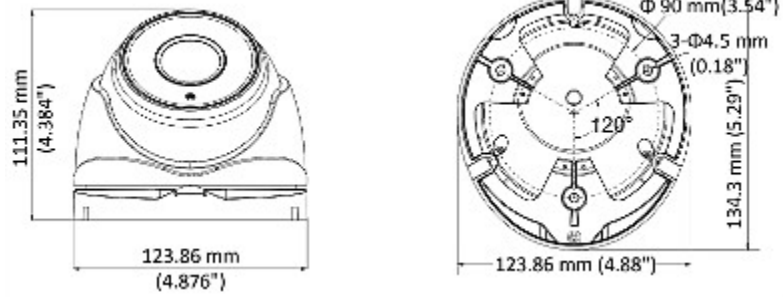
Camera is out from clamping ring:



Camera mounting side view:



Dimensions:



The change of the AHD / HD-CVI / HD-TVI / CVBS standard is done with the corresponding button by keeping it pressed for approx. 5 seconds:



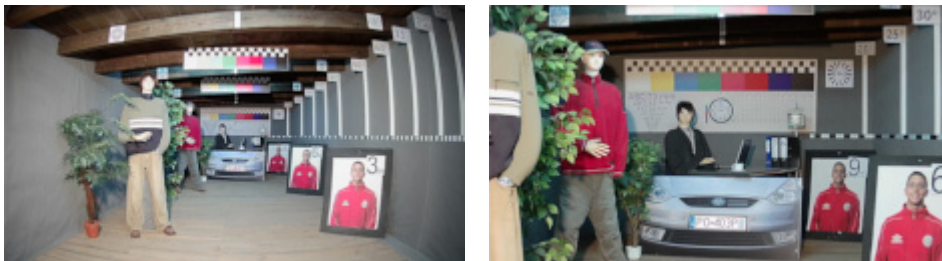
In the kit:



OUR TESTS

AHD:

Camera image at artificial illumination (about 30Lux):



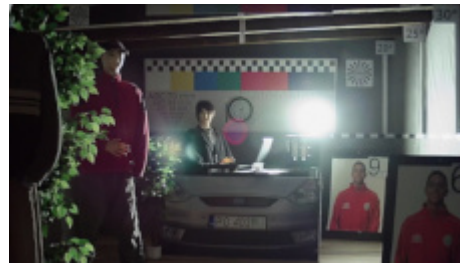
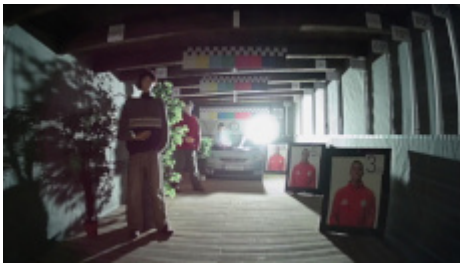
Camera image at night conditions with internal built-in IR illuminator on:



DELTA-OPTI Monika Matysiak; <https://www.delta.poznan.pl>
POL; 60-713 Poznań; Graniczna 10
e-mail: delta-opti@delta.poznan.pl; tel: +(48) 61 864 69 60

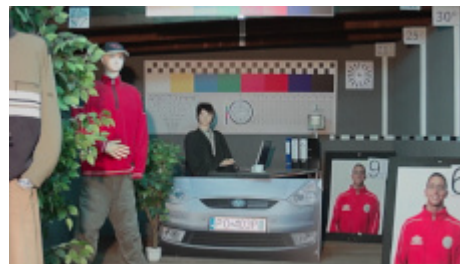


Camera image at direct strong light opposite to camera:



HD-CVI:

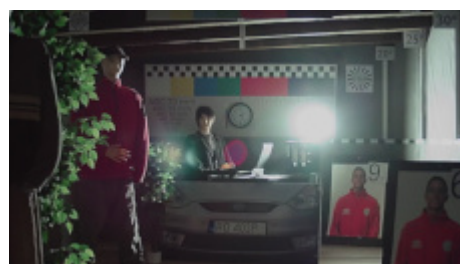
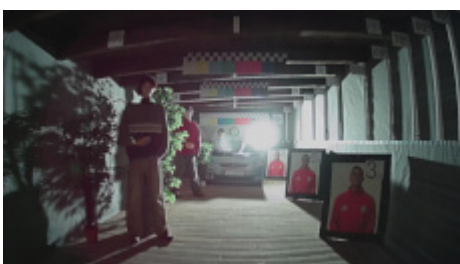
Camera image at artificial illumination (about 30Lux):



Camera image at night conditions with internal built-in IR illuminator on:



Camera image at direct strong light opposite to camera:



HD-TVI:

Camera image at artificial illumination (about 30Lux):



Camera image at night conditions with internal built-in IR illuminator on:



Camera image at direct strong light opposite to camera:

