

Code: HAC-HDBW1200R-Z-2712

AHD, HD-CVI, HD-TVI, CVBS VANDALPROOF CAMERA **HAC-HDBW1200R-Z-2712** - 1080p 2.7 ... 12 mm - **MOTOZOOM** DAHUA

Net: **92.12 EUR** Gross: **113.31 EUR**

Megapixel camera with 1/2.7" CMOS sensor and AHD / HD-CVI / HD-TVI / CVBS.

The AHD / HD-CVI / HD-TVI interface allows to transmission of analog video signal via coaxial cable in 1080p resolution. It enables the transmission of HD resolution images for even 500 m distance with keeping the low costs of the installation. During transmission there are no delays and is maintained the original, high quality image.

The used motozoom lens with 2.7 ... 12 mm focal length allows to remote view angle adjustment.

In the case of video transmission using a twisted pair cable and matching transformers (balun), be aware of the possibility of signal reflections and interfering signals.

Attention! The camera default setting is HD-CVI standard. To change the camera standard you need use the PFM820 controller, available separately.



SPECIFICATION

Standard:	AHD, HD-CVI, HD-TVI, CVBS
Sensor:	1/2.7 " Progressive Scan CMOS
Matrix size:	2.1 Mpx
Resolution:	<ul style="list-style-type: none">• AHD / HD-CVI / HD-TVI : 1920 x 1080 - 1080p , 1280 x 720 - 720p• CVBS : 960 x 576 - 960H
Lens:	2.7 ... 12 mm - Motozoom
View angle:	<ul style="list-style-type: none">• 106 ° ... 34 ° (manufacturer data)• 100 ° ... 33 ° (our tests result)
Range of IR illumination:	30 m
IR illuminator support:	ICR - Movable InfraRed filter
IR illuminator power adjustment:	Automatic
S/N ratio:	> 65 dB
Video output:	1 Vpp 75 Ω, AHD / HD-CVI / HD-TVI / CVBS - To change the standard, in which the camera is operating, the PFM820 controller is required
Main features:	<ul style="list-style-type: none">• 2D-DNR - Digital Noise Reduction• D-WDR - Wide Dynamic Range• ICR - Movable InfraRed filter• BLC/HLC - Back Light / High Light Compensation• AGC - Automatic Gain Control• Auto White Balance• Day/night mode
OSD menu:	✓

DELTA-OPTI Monika Matysiak; <https://www.delta.poznan.pl>
POL; 60-713 Poznań; Graniczna 10
e-mail: delta-opti@delta.poznan.pl; tel: +(48) 61 864 69 60

Housing:	Dome, Aluminum
Color:	White
Vandal-proof:	IK10
"Index of Protection":	IP67
Power supply:	12 V DC / 530 mA
Power consumption:	≤ 6.3 W
Operation temp:	-30 °C ... 60 °C
Weight:	0.43 kg
Dimensions:	Ø 122 x 89 mm
Supported languages:	Polish, English
Manufacturer / Brand:	DAHUA
Guarantee:	3 years

PRESENTATION

Camera view after remove the Dome cover:



Camera view after remove the Dome cover - camera lens adjustment knobs are visible:



Mounting side view:



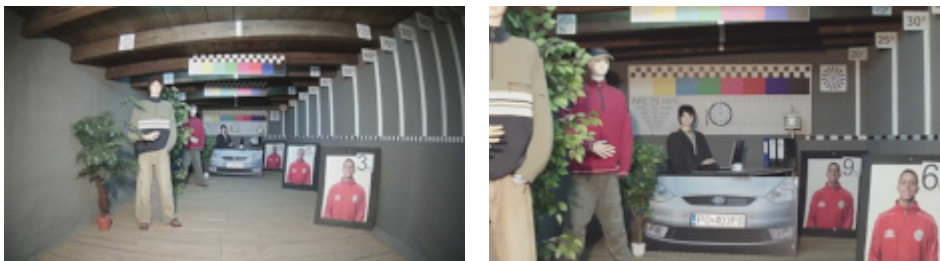
In the kit:



OUR TESTS

AHD:

Camera image at artificial illumination (about 30Lux):



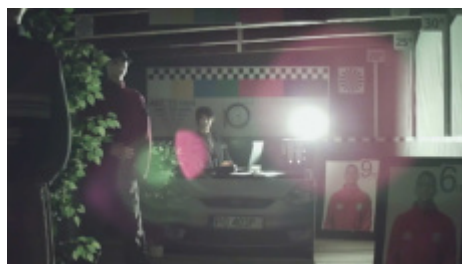
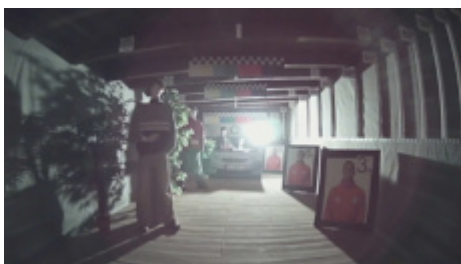
Camera image at night conditions with internal built-in IR illuminator on:



DELTA-OPTI Monika Matysiak; <https://www.delta.poznan.pl>
POL; 60-713 Poznań; Graniczna 10
e-mail: delta-opti@delta.poznan.pl; tel: +(48) 61 864 69 60

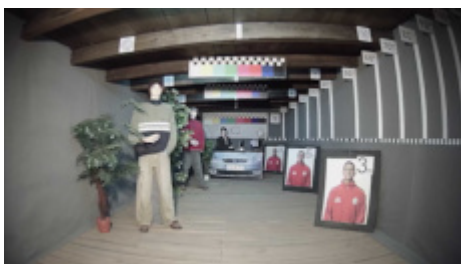


Camera image at direct strong light opposite to camera:



HD-CVI:

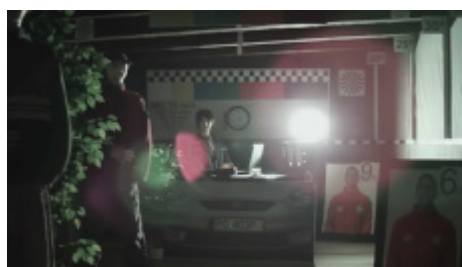
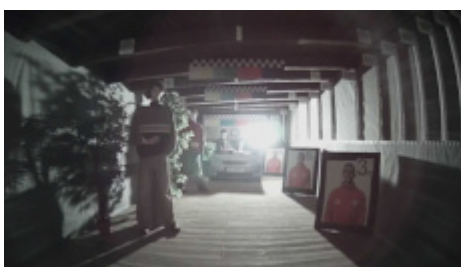
Camera image at artificial illumination (about 30Lux):



Camera image at night conditions with internal built-in IR illuminator on:



Camera image at direct strong light opposite to camera:



HD-TVI:

Camera image at artificial illumination (about 30Lux):





Camera image at night conditions with internal built-in IR illuminator on:



Camera image at direct strong light opposite to camera:

