

Code: HAC-HDW1200T-Z-A-2712-S5

AHD, HD-CVI, HD-TVI, PAL CAMERA **HAC-HDW1200T-Z-A-2712-S5** - 1080p  
2.7 ... 12 mm - MOTOZOOM DAHUA  
Net: **125.55 EUR** Gross: **125.55 EUR**

Megapixel camera with 1/2.7" CMOS sensor and AHD / HD-CVI / HD-TVI / PAL.

The AHD / HD-CVI / HD-TVI interface allows to transmission of analog video signal via coaxial cable in max. 8 Mpx (4K UHD) resolution. During transmission there are no delays and is maintained the original, high quality image.

In the case of video transmission using a twisted pair cable and matching transformers (balun), be aware of the possibility of signal reflections and interfering signals.

The used motozoom lens with 2.7 ... 12 mm focal length allows to remote view angle adjustment. Camera is according to IP67 Index of Protection norm.



## SPECIFICATION

Standard:	AHD, HD-CVI, HD-TVI, CVBS
Sensor:	1/2.7 " Progressive Scan CMOS
Matrix size:	2.1 Mpx
Resolution:	1920 x 1080 - 1080p , 1280 x 720 - 720p , 960 x 576 - 960H, PAL
Lens:	2.7 ... 12 mm - Motozoom - The camera does not have auto-focus function
View angle:	<ul style="list-style-type: none"><li>• 102 ° ... 33 ° (manufacturer data)</li><li>• 96 ° ... 34 ° (our tests result)</li></ul>
Range of IR illumination:	60 m
IR illuminator support:	ICR - Movable InfraRed filter
IR illuminator power adjustment:	Automatic
Video output:	AHD / HD-CVI / HD-TVI / CVBS - 1 Vpp / 75 Ω
S/N ratio:	> 65 dB
Audio:	Microphone built-in - HD-CVI only

Main features:	<ul style="list-style-type: none"> <li>• Motozoom lens - The control possible only from Dahua recorders in HD-CVI mode</li> <li>• D-WDR - Wide Dynamic Range</li> <li>• 2D-DNR - Digital Noise Reduction</li> <li>• F-DNR (Defog) - Reduction of image noise caused by precipitation</li> <li>• Day/night mode</li> <li>• ICR - Movable InfraRed filter</li> <li>• BLC/HLC - Back Light / High Light Compensation</li> <li>• Auto White Balance</li> <li>• AGC - Automatic Gain Control</li> <li>• Mirror - Mirror image</li> <li>• Privacy zones - max. 8</li> <li>• Sharpness - sharper image outlines</li> </ul>
OSD menu:	OSD menu available via DAHUA recorder
Power supply:	12 V DC / 690 mA
Power consumption:	≤ 8.2 W
Housing:	Dome, Aluminum
Color:	White
Vandal-proof:	—
"Index of Protection":	IP67
Operation temp:	-30 °C ... 60 °C
Weight:	0.59 kg
Dimensions:	Ø 122 x 105 mm
Manufacturer / Brand:	DAHUA
Guarantee:	<b>3 years</b>

## PRESENTATION

Camera is out from clamping ring:



Mounting side view:





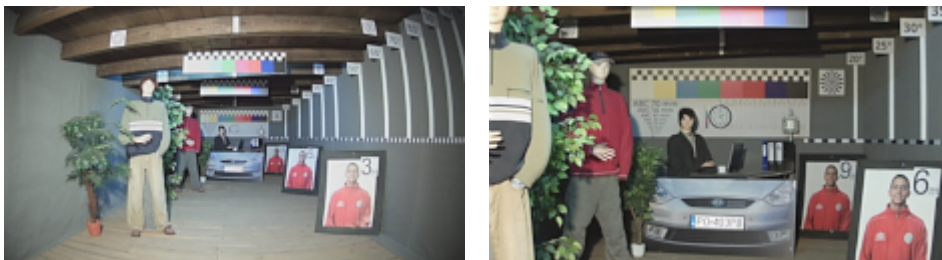
In the kit:



## OUR TESTS

AHD:

Camera image at artificial illumination (about 30Lux):



Camera image at night conditions with internal built-in IR illuminator on:



Camera image at direct strong light opposite to camera:



HD-CVI:

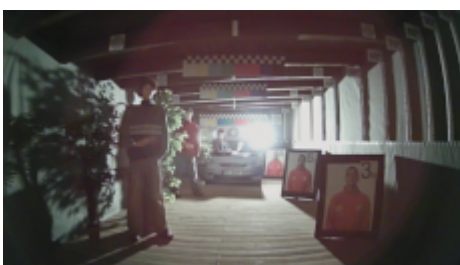
Camera image at artificial illumination (about 30Lux):



Camera image at night conditions with internal built-in IR illuminator on:



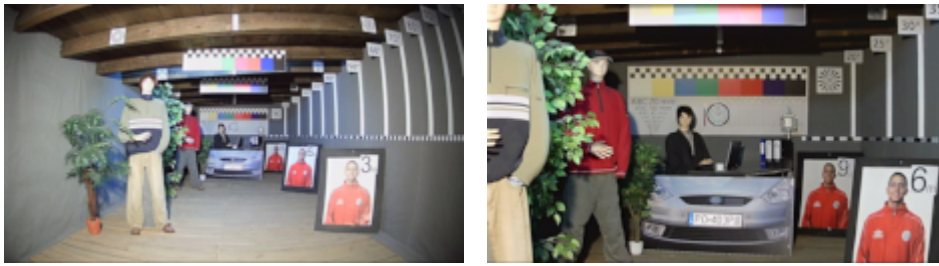
Camera image at direct strong light opposite to camera:



HD-TVI:

Camera image at artificial illumination (about 30Lux):





Camera image at night conditions with internal built-in IR illuminator on:



Camera image at direct strong light opposite to camera:



## PACKAGE

Dimensions (L x W x H): 0x0x0 mm	Gross Weight: 0 kg
----------------------------------	--------------------