

Code: DH-HAC-HFW1200RP-028

# AHD, HD-CVI, HD-TVI, PAL CAMERA **DH-HAC-HFW1200RP-028** - 1080p 2.8 mm DAHUA

Net: **31.37 EUR** Gross: **38.59 EUR**

Megapixel camera with 1/2.7" CMOS sensor and AHD / HD-CVI / HD-TVI / PAL.

The AHD / HD-CVI / HD-TVI interface allows to transmission of analog video signal via coaxial cable in max. 8 Mpx (4K UHD) resolution. During transmission there are no delays and is maintained the original, high quality image.

In the case of video transmission using a twisted pair cable and matching transformers (balun), be aware of the possibility of signal reflections and interfering signals.

Attention! The camera default setting is HD-CVI standard. To change the camera standard you need use the PFM820 controller, available separately.

Camera is according to IP67 Index of Protection norm. The 3-Axis integrated camera bracket has a regulation in all three planes, which allows to turn the camera to any direction.



## SPECIFICATION

Standard:	AHD, HD-CVI, HD-TVI, PAL
Sensor:	1/2.7 " Progressive Scan CMOS
Matrix size:	2.1 Mpx
Resolution:	1920 x 1080 - 1080p AHD-M, HD-CVI, HD-TVI 960 x 576 - 960H PAL
Lens:	2.8 mm
View angle:	<ul style="list-style-type: none"><li>• 103 ° (manufacturer data)</li><li>• 100 ° (our tests result)</li></ul>
Range of IR illumination:	20 m
IR illuminator power adjustment:	Automatic
Video output:	AHD / HD-CVI / HD-TVI / PAL, 1 Vpp / 75 Ω
OSD menu:	✓
Main features:	<ul style="list-style-type: none"><li>• D-WDR - Wide Dynamic Range</li><li>• 2D-DNR - Digital Noise Reduction</li><li>• BLC/HLC - Back Light / High Light Compensation</li><li>• ICR - Movable InfraRed filter</li><li>• Sharpness - sharper image outlines</li><li>• AGC - Automatic Gain Control</li><li>• Auto White Balance</li></ul>
Power supply:	12 V DC / 280 mA

DELTA-OPTI Monika Matysiak; <https://www.delta.poznan.pl>  
POL; 60-713 Poznań; Graniczna 10  
e-mail: [delta-opti@delta.poznan.pl](mailto:delta-opti@delta.poznan.pl); tel: +(48) 61 864 69 60

Power consumption:	≤ 3.3 W
Housing:	Compact, Plastic
Color:	White
"Index of Protection":	IP67
Operation temp:	-40 °C ... 60 °C
Weight:	0.14 kg
Dimensions:	154 x 70 x 70 mm
Manufacturer / Brand:	DAHUA
Guarantee:	<b>3 years</b>

## PRESENTATION

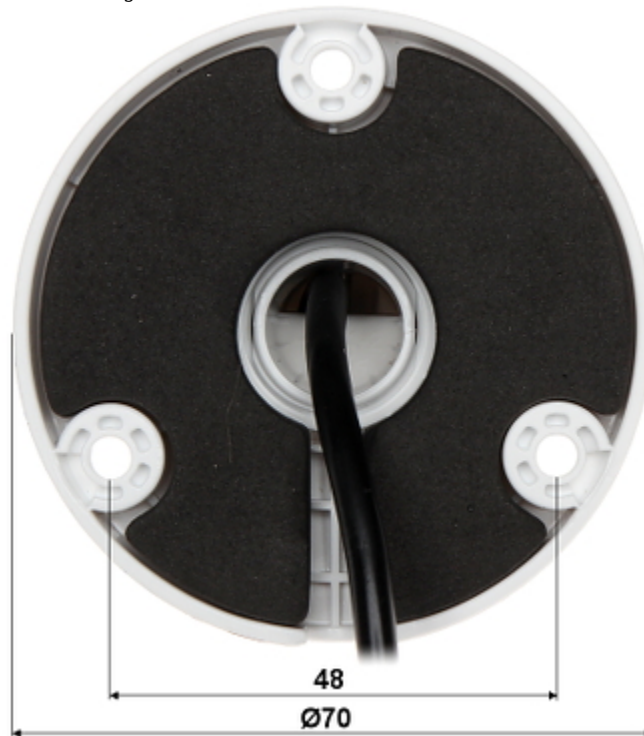
Front view:



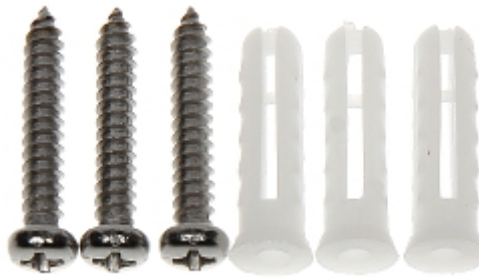
Side view:



Camera mounting side view:



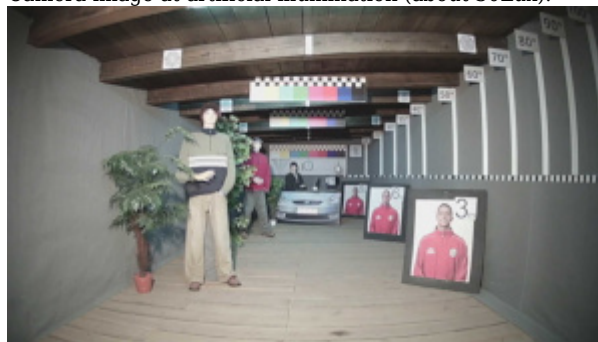
In the kit:



## OUR TESTS

AHD:

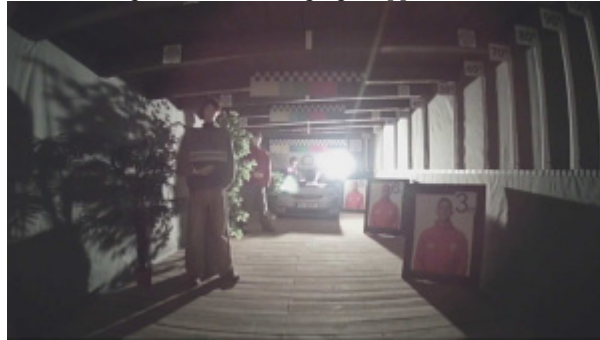
Camera image at artificial illumination (about 30Lux):



Camera image at night conditions with internal built-in IR illuminator on:



Camera image at direct strong light opposite to camera:



HD-CVI:

Camera image at artificial illumination (about 30Lux):



Camera image at night conditions with internal built-in IR illuminator on:



Camera image at direct strong light opposite to camera:



HD-TVI:

Camera image at artificial illumination (about 30Lux):



Camera image at night conditions with internal built-in IR illuminator on:



Camera image at direct strong light opposite to camera:

