

Code: HAC-B1A21-0360B

AHD, HD-CVI, HD-TVI, PAL CAMERA **HAC-B1A21-0360B** - 1080p 3.6 mm DAHUA

Net: **32.16 EUR** Gross: **39.56 EUR**

Megapixel camera with 1/2.7" CMOS sensor and AHD / HD-CVI / HD-TVI / PAL. The DAHUA Cooper series product has been designed to maximum cost reduction while maintaining high quality and ease of use.

The AHD / HD-CVI / HD-TVI interface allows to transmission of analog video signal via coaxial cable in max. 8 Mpx (4K UHD) resolution. During transmission there are no delays and is maintained the original, high quality image.

In the case of video transmission using a twisted pair cable and matching transformers (balun), be aware of the possibility of signal reflections and interfering signals.

Attention! The camera is set by default in the HD-CVI standard. Standard changes can be made using the recorder - by entering the OSD camera menu or using the PFM820 controller.

Camera is according to IP67 Index of Protection norm. The 3-Axis integrated camera bracket has a regulation in all three planes, which allows to turn the camera to any direction.



SPECIFICATION

Standard:	AHD, HD-CVI, HD-TVI, PAL
Sensor:	1/2.7 " Progressive Scan CMOS
Matrix size:	2.1 Mpx
Resolution:	1920 x 1080 - 1080p 1280 x 720 - 720p 960 x 576 - 960H, PAL
Lens:	3.6 mm
View angle:	<ul style="list-style-type: none">• 93 ° (manufacturer data)• 90 ° (our tests result)
Range of IR illumination:	20 m
IR illuminator power adjustment:	Automatic
Video output:	AHD / HD-CVI / HD-TVI / PAL, 1 Vpp / 75 Ω
S/N ratio:	> 65 dB
OSD menu:	OSD menu available via DAHUA recorder
Main features:	<ul style="list-style-type: none">• D-WDR - Wide Dynamic Range• 2D-DNR - Digital Noise Reduction• BLC/HLC - Back Light / High Light Compensation• Anti-Flicker - The technology eliminates the tiring eyes flickering image effect• ICR - Movable InfraRed filter• Mirror - Mirror image• Sharpness - sharper image outlines• AGC - Automatic Gain Control• Privacy zones• Auto White Balance

DELTA-OPTI Monika Matysiak; <https://www.delta.poznan.pl>
POL; 60-713 Poznań; Graniczna 10
e-mail: delta-opti@delta.poznan.pl; tel: +(48) 61 864 69 60

Power supply:	12 V DC / 220 mA
Power consumption:	≤ 2.7 W
Housing:	Compact, Plastic
Color:	White
"Index of Protection":	IP67
Operation temp:	-40 °C ... 60 °C
Weight:	0.14 kg
Dimensions:	149 x 70 x 70 mm
Manufacturer / Brand:	DAHUA
Guarantee:	3 years

PRESENTATION

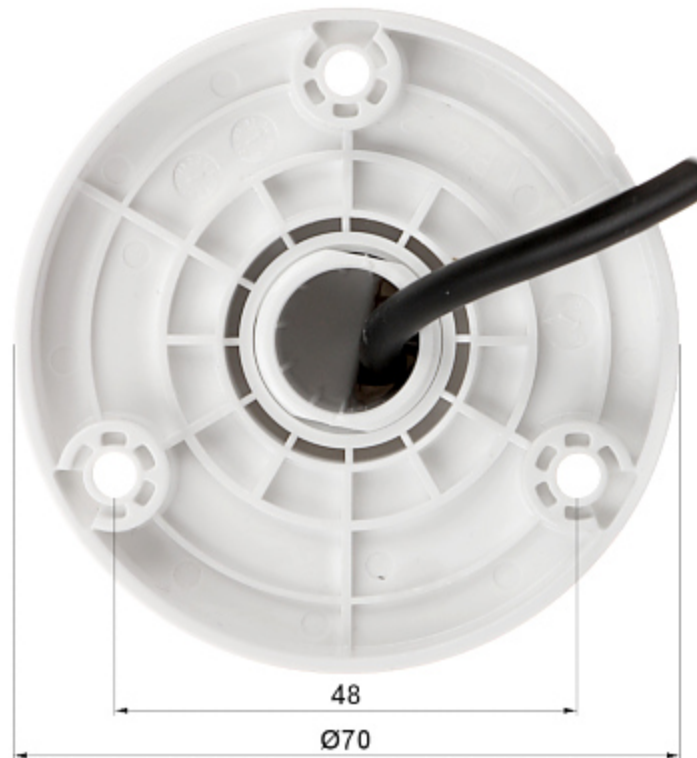
Front view:



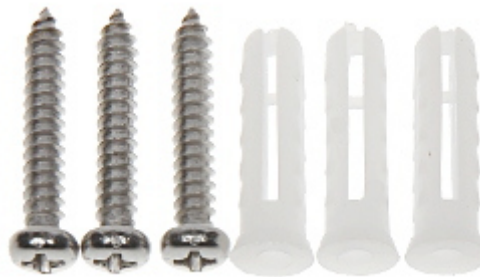
Side view:



Camera mounting side view:



In the kit:



OUR TESTS

AHD:

Camera image at artificial illumination (about 30Lux):



Camera image at night conditions with internal built-in IR illuminator on:



Camera image at direct strong light opposite to camera:



HD-CVI:

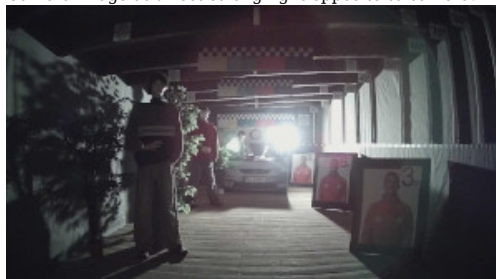
Camera image at artificial illumination (about 30Lux):



Camera image at night conditions with internal built-in IR illuminator on:



Camera image at direct strong light opposite to camera:



HD-TVI:

Camera image at artificial illumination (about 30Lux):



Camera image at night conditions with internal built-in IR illuminator on:



Camera image at direct strong light opposite to camera:

