

Code: BCS-TQE4200IR3-B

AHD, HD-CVI, HD-TVI, PAL CAMERA **BCS-TQE4200IR3-B** - 1080p, 2.8 mm

Net: **46.77 EUR** Gross: **57.53 EUR**

Megapixel camera with 1/2.9" Sony CMOS IMX323 sensor and AHD / HD-CVI / HD-TVI / PAL.

The AHD / HD-CVI / HD-TVI interface allows to transmission of analog video signal via coaxial cable in 1080p resolution. During transmission there are no delays and is maintained the original, high quality image. Standard changes are made using configuration switches.

In the case of video transmission using a twisted pair cable and matching transformers (balun), be aware of the possibility of signal reflections and interfering signals.

The range of IR illumination according to the manufacturer data, depends on outer conditions (visibility - air transparency, environment, wall colors ie. scene reflectance). Camera is according to IP66 Index of Protection norm.



SPECIFICATION

Standard:	AHD, HD-CVI, HD-TVI, CVBS
Sensor:	1/2.9 " Sony CMOS IMX323
Matrix size:	2 Mpx
Resolution:	1920 x 1080 - 1080p , 1280 x 720 - 720p 960 x 576 - 960H
Lens:	2.8 mm
View angle:	• 91 ° (manufacturer data) • 105 ° (our tests result)
Range of IR illumination:	40 m
IR illuminator power adjustment:	Automatic
Video output:	AHD / HD-CVI / HD-TVI / CVBS, 1 Vpp / 75 Ω
Audio:	—
OSD menu:	✓
Main features:	<ul style="list-style-type: none">• D-WDR - Wide Dynamic Range• DNR - Digital Noise Reduction• Sharpness - sharper image outlines• AGC - Automatic Gain Control• ICR - Movable InfraRed filter• Privacy zones• Mirror - Mirror image• Auto White Balance
Power supply:	12 V DC / 830 mA
Power consumption:	≤ 10 W

DELTA-OPTI Monika Matysiak; <https://www.delta.poznan.pl>
POL; 60-713 Poznań; Graniczna 10
e-mail: delta-opti@delta.poznan.pl; tel: +(48) 61 864 69 60

Housing:	Compact, Plastic + Metal
Color:	White
"Index of Protection":	IP66
Operation temp:	-30 °C ... 60 °C
Weight:	0.44 kg
Dimensions:	Ø 69 x 185 mm
Manufacturer / Brand:	BCS
Guarantee:	3 years

PRESENTATION

Front view:



Side view:



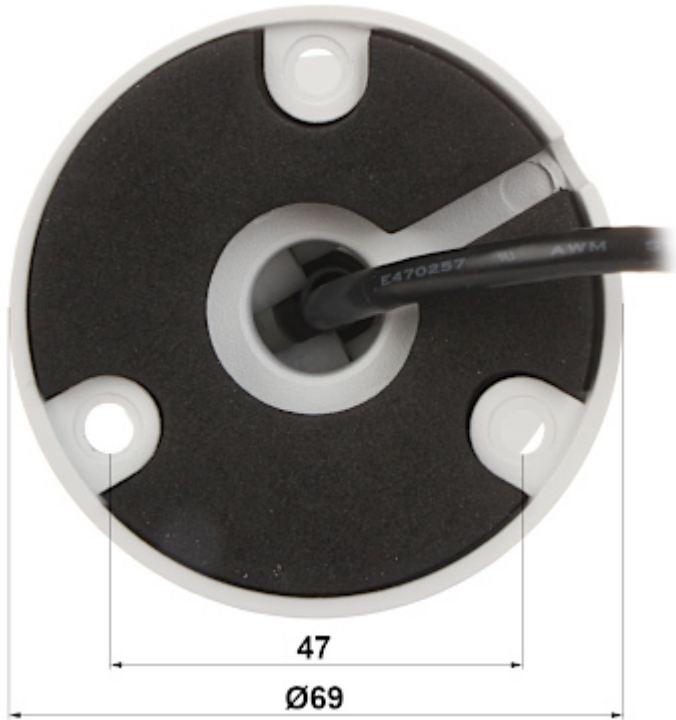
Connectors:



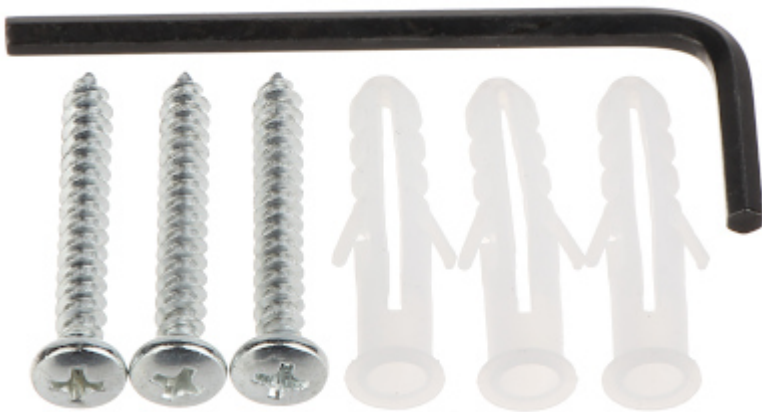
Standard changes are made using configuration switches:



Camera mounting side view:



In the kit:



OUR TESTS

AHD:

Camera image at artificial illumination (about 30Lux):



Camera image at night conditions with internal built-in IR illuminator on:



Camera image at direct strong light opposite to camera:



HD-CVI:

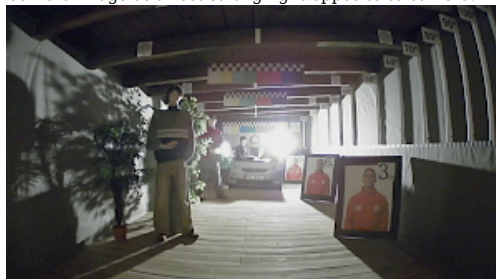
Camera image at artificial illumination (about 30Lux):



Camera image at night conditions with internal built-in IR illuminator on:



Camera image at direct strong light opposite to camera:



HD-TVI:

Camera image at artificial illumination (about 30Lux):



Camera image at night conditions with internal built-in IR illuminator on:



Camera image at direct strong light opposite to camera:

