

Code: HAC-HUM1220A-0280P-PIR

# AHD, HD-CVI, HD-TVI, PAL HIDDEN CAMERA **HAC-HUM1220A-0280P-PIR** - 1080p 2.8 mm DAHUA

Net: **357.00 PLN** Gross: **439.11 PLN**

Megapixel camera with 1/2.9" CMOS sensor and AHD / HD-CVI / HD-TVI / PAL.  
The AHD / HD-CVI / HD-TVI interface allows to transmission of analog video signal via coaxial cable in max. 8 Mpx (4K UHD) resolution. During transmission there are no delays and is maintained the original, high quality image.  
Setting the camera in PAL mode allows to obtain an image in 960H resolution.  
Attention! The camera default setting is HD-CVI standard. To change the camera standard you need use the PFM820 controller, available separately.  
WARNING! The alarm function triggered by the motion detector is only available in HD-CVI mode, for selected models of recorders.



## SPECIFICATION

Standard:	AHD, HD-CVI, HD-TVI, PAL
Sensor:	1/2.9 " CMOS
Matrix size:	2.1 Mpx
Resolution:	1920 x 1080 - 1080p, AHD-H, HD-CVI, HD-TVI , 960 x 576 - 960H PAL
Lens:	2.8 mm
View angle:	<ul style="list-style-type: none"><li>• 101 ° (manufacturer data)</li><li>• 97 ° (our tests result)</li></ul>
S/N ratio:	> 65 dB
Video output:	1 Vpp 75 Ω, AHD, HD-CVI, HD-TVI, PAL
PIR DETECTOR:	✓
Pyroelectric sensor:	Double
Sensor type:	Passive Infra Red (PIR)
Detection angle / Detection range:	100 ° / 12 m
Recommended installation height:	2.2 ... 2.5 m
Pet immunity:	≤ 18 kg
Sensitivity adjustment:	2 - step

Main features:	<ul style="list-style-type: none"> <li>• WARNING! The alarm function triggered by the motion detector is only available in HD-CVI mode, for selected models of recorders</li> <li>• Sense-UP - increase the camera sensitivity x30</li> <li>• WDR - Wide Dynamic Range</li> <li>• 2D-DNR - Digital Noise Reduction</li> <li>• BLC/HLC - Back Light / High Light Compensation</li> <li>• Mirror - Mirror image</li> <li>• Privacy zones - max. 4</li> <li>• Motion Detection</li> <li>• Sharpness - sharper image outlines</li> <li>• Auto White Balance</li> </ul>
OSD menu:	OSD menu available via DAHUA recorder
Application:	The camera is designed for indoor use, due to the possibility of steam condensation.
Power supply:	12 V DC / 60 mA
Power consumption:	≤ 0.7 W
Housing:	Spy, Plastic
Color:	White
Operation temp:	-10 °C ... 50 °C
Weight:	0.13 kg
Dimensions:	120 x 62 x 59 mm
Supported languages:	English
Manufacturer / Brand:	DAHUA
Guarantee:	<b>3 years</b>

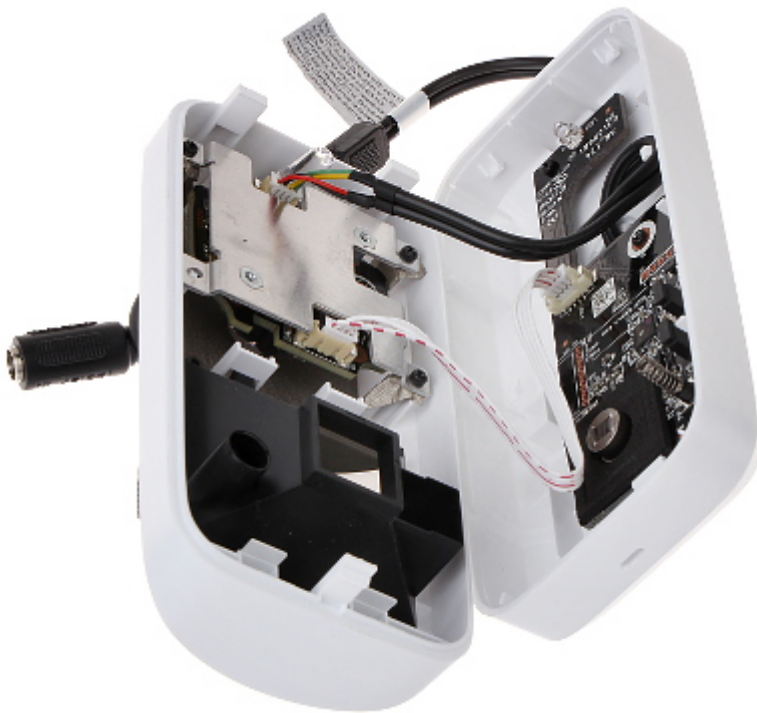
## PRESENTATION



Front view:



Internal view:



Mounting side view:



In the kit:



## OUR TESTS

DELTA-OPTI Monika Matysiak; <https://www.delta.poznan.pl>  
POL; 60-713 Poznań; Graniczna 10  
e-mail: [delta-opti@delta.poznan.pl](mailto:delta-opti@delta.poznan.pl); tel: +(48) 61 864 69 60

AHD:

Camera image at artificial illumination (about 30Lux):



Camera image at direct strong light opposite to camera:



Camera image at night conditions, at different illumination values show below:

10 LUX:



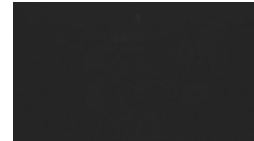
1 LUX:



0.1 LUX:



0.01 LUX:



HD-CVI:

Camera image at artificial illumination (about 30Lux):



Camera image at direct strong light opposite to camera:



Camera image at night conditions, at different illumination values show below:

10 LUX:



1 LUX:



0.1 LUX:



0.01 LUX:



HD-TVI:

Camera image at artificial illumination (about 30Lux):



Camera image at direct strong light opposite to camera:



Camera image at night conditions, at different illumination values show below:

10 LUX:



1 LUX:



0.1 LUX:



0.01 LUX:



## PACKAGE

Dimensions (L x W x H): 0x0x0 mm	Gross Weight: 0 kg
----------------------------------	--------------------