

Code: APTI-H50YF-36

AHD, HD-CVI, HD-TVI, PAL HIDDEN CAMERA **APTI-H50YF-36** 2Mpx / 5Mpx 3.6 mm

Net: **188.60 PLN** Gross: **231.98 PLN**

Megapixel camera with 1/2.7" CMOS sensor and AHD / HD-CVI / HD-TVI / CVBS.

The AHD / HD-CVI / HD-TVI interface allows to transmission of analog video signal via coaxial cable in max. 8 Mpx (4K UHD) resolution. During transmission there are no delays and is maintained the original, high quality image.

In the case of video transmission using a twisted pair cable and matching transformers (balun), be aware of the possibility of signal reflections and interfering signals.

Setting the camera in PAL mode allows to obtain an image in 960H resolution. The appropriate signal format selection is done by tilting and holding the joystick for 5 s without entering to the OSD menu. Changing the signal to the NTSC in the camera causes loss of image in connected AHD recorder.

Attention! The camera is factory set to the resolution 2 Mpx (1080p).



SPECIFICATION

Standard:	AHD, HD-CVI, HD-TVI, PAL
Sensor:	1/2.7 " Progressive Scan CMOS
Matrix size:	5 Mpx
Resolution:	<ul style="list-style-type: none">• 2592 x 1944 - 5 Mpx @ AHD / HD-TVI @ 20 fps / 12.5 fps ;• 2560 x 1440 - 4 Mpx @ AHD / HD-CVI / HD-TVI @ 25 fps,• 1920 x 1080 - 1080p @ AHD / HD-CVI / HD-TVI @ 25 fps• 960 x 576 - 960H @ PAL
Lens:	3.6 mm
View angle:	<ul style="list-style-type: none">• 95 ° (manufacturer data)• 75 ° (our tests result)
S/N ratio:	> 50 dB
Video output:	1 Vpp 75 Ω, AHD, HD-CVI, HD-TVI, PAL - selectable by switch
Main features:	<ul style="list-style-type: none">• D-WDR - Wide Dynamic Range• DNR - Digital Noise Reduction• ICR - Movable InfraRed filter• AGC - Automatic Gain Control• BLC - Back Light Compensation• Day/Night mode (color/b&w/auto)• Auto White Balance• Sharpness - sharper image outlines
OSD menu:	✓
Application:	The camera is designed for indoor use, due to the possibility of steam condensation.
"Index of Protection":	IP40
Power supply:	12 V DC / 110 mA
Housing:	Spy, Plastic
Color:	White
Operation temp:	-10 °C ... 50 °C
Weight:	0.11 kg

DELTA-OPTI Monika Matysiak; <https://www.delta.poznan.pl>
POL; 60-713 Poznań; Graniczna 10
e-mail: delta-opti@delta.poznan.pl; tel: +(48) 61 864 69 60

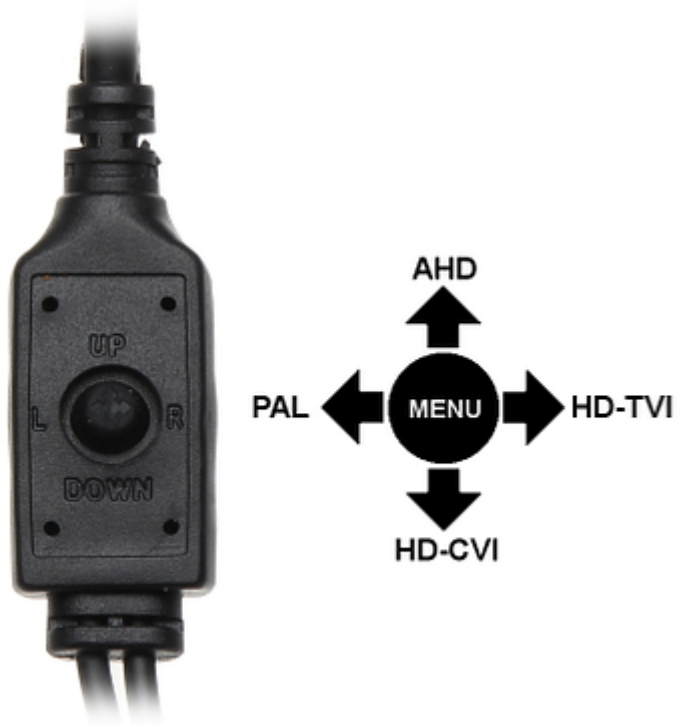
Dimensions:	Ø 120 x 56 mm
Guarantee:	2 years

PRESENTATION

Mounting side view:



The appropriate signal format selection is done by tilting and holding the joystick for 5 s without entering to the OSD menu. Changing the signal to the NTSC in the camera causes loss of image in connected AHD recorder:



In the kit:



OUR TESTS

AHD:

Camera image at artificial illumination (about 30Lux):



Camera image at direct strong light opposite to camera:



Camera image at night conditions with external IR illuminator on:



Camera image at night conditions, at different illumination values show below:

10 LUX:



1 LUX:



0.1 LUX:



0.01 LUX:



HD-CVI:

Camera image at artificial illumination (about 30Lux):



Camera image at direct strong light opposite to camera:



Camera image at night conditions with external IR illuminator on:



Camera image at night conditions, at different illumination values show below:

10 LUX:



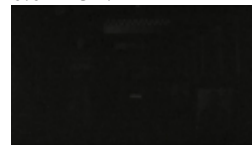
1 LUX:



0.1 LUX:



0.01 LUX:



HD-TVI:

Camera image at artificial illumination (about 30Lux):



Camera image at direct strong light opposite to camera:



Camera image at night conditions with external IR illuminator on:



Camera image at night conditions, at different illumination values show below:

10 LUX:



1 LUX:



0.1 LUX:



0.01 LUX:



PACKAGE

Dimensions (L x W x H): 0x0x0 mm	Gross Weight: 0 kg
----------------------------------	--------------------