

Code: IPC-HDBW4231F-AS-0280B

# IP VANDALPROOF CAMERA **IPC-HDBW4231F-AS-0280B** 2.8 mm DAHUA

Net: **197.25 EUR** Gross: **242.62 EUR**

IP camera with efficient H.264 / H.265 image compression algorithm for clear and smooth video streaming at maximal resolution of 1920 x 1080 (1080p).

PoE powering possibility, compatible with the 802.3af standard makes the device more universal and easier to install.

The camera has a very flat profile, it's only 51 mm out from the ceiling.



## SPECIFICATION

Standard:	TCP/IP
Sensor:	1/2.8 " Progressive Scan CMOS
Matrix size:	2.1 Mpx
Scanning system:	Progressive
Resolution:	1920 x 1080 - 1080p 1280 x 1024 - 1.4 Mpx 1280 x 960 - 1.3 Mpx 1280 x 720 - 720p
Lens:	2.8 mm
View angle:	110 °
Range of IR illumination:	20 m
S/N ratio:	> 50 dB
RS-485 interface:	—
Memory card slot:	Micro SD memory cards up to 128GB support (possible local recording)
Image compression method:	H.265 / H.264 / MJPEG
Alarm inputs / outputs:	—
Audio:	Microphone built-in
Bitrate:	14 ... 5632 kbps - H.265 24 ... 9472 kbps - H.264
Main stream frame rate:	50 fps @ 1080p
Network interface:	10/100 Base-T (RJ-45)
Network protocols:	IPv4/IPv6, HTTP, HTTPS, SSL, TCP/IP, UDP, UPnP, ICMP, IGMP, SNMP, RTSP, RTP, SMTP, NTP, DHCP, DNS, PPPOE, DDNS, FTP, IP Filter, QoS, Bonjour
WEB Server:	Built-in
Max. number of on-line users:	20
ONVIF:	2.42

DELTA-OPTI Monika Matysiak; <https://www.delta.poznan.pl>  
POL; 60-713 Poznań; Graniczna 10  
e-mail: [delta-opti@delta.poznan.pl](mailto:delta-opti@delta.poznan.pl); tel: +(48) 61 864 69 60

Main features:	<ul style="list-style-type: none"> <li>• 3D-DNR - Digital Noise Reduction</li> <li>• WDR - 120 dB - Wide Dynamic Range</li> <li>• BLC/HLC - Back Light / High Light Compensation</li> <li>• Possibility to change the resolution, quality and bit rate</li> <li>• Audio detection</li> <li>• IVS analysis : intrusion, crossing the line (tripwire), abandoned/missing object, face detection</li> <li>• Configurable Privacy Zones</li> <li>• Mirror - Mirror image</li> </ul>
Color:	White
Power supply:	<ul style="list-style-type: none"> <li>• PoE (802.3af),</li> <li>• 12 V DC / 350 mA</li> </ul>
Power consumption:	< 4.5 W
Mobile phones support:	Port no.: 37777 or access by a cloud (P2P) <ul style="list-style-type: none"> <li>• Android: Free application <a href="#">gDMSS Plus</a></li> <li>• iOS (iPhone): Free application <a href="#">iDMSS Plus</a></li> </ul>
Default admin user / password:	admin / - The administrator password should be set at the first start
Default IP address:	192.168.1.108
Web browser access ports:	80, 37777
PC client access ports:	37777
Mobile client access ports:	37777
Port ONVIF:	80
RTSP URL:	rtsp://admin:hasło@192.168.1.108:554/cam/realmonitor?channel=1&subtype=0 - Main stream rtsp://admin:hasło@192.168.1.108:554/cam/realmonitor?channel=1&subtype=1 - Sub stream
Housing:	Dome, Metal
Vandal-proof:	✓
"Index of Protection":	IP67
Dimensions:	Ø 106 x 51 mm
Weight:	0.33 kg
Supported languages:	Polish, English
Manufacturer / Brand:	DAHUA
Guarantee:	<b>3 years</b>

## PRESENTATION

Camera view after remove the Dome cover:



Memory card slot:

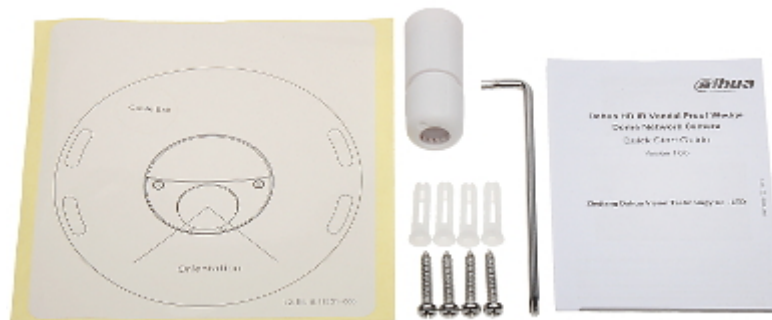


Mounting side view:



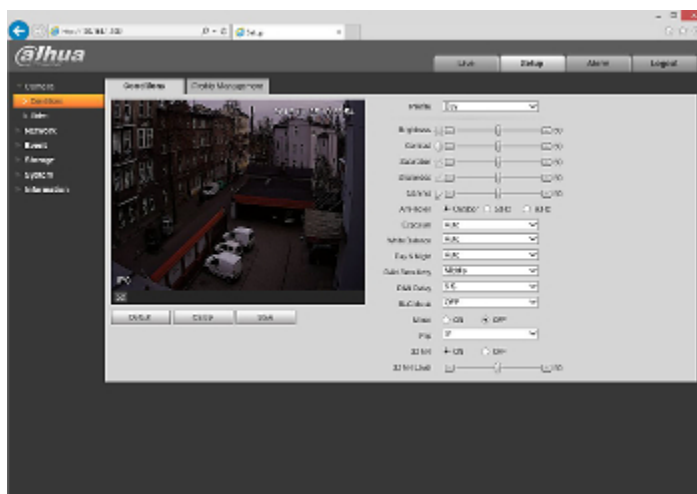
See how to initialize DAHUA cameras:

In the kit:



:

Example captures of device interface:



## OUR TESTS

Camera image at artificial illumination (about 30Lux):



Camera image at night conditions with internal built-in IR illuminator on:



DELTA-OPTI Monika Matysiak; <https://www.delta.poznan.pl>  
POL; 60-713 Poznań; Graniczna 10  
e-mail: delta-opti@delta.poznan.pl; tel: +(48) 61 864 69 60

Camera image at direct strong light opposite to camera:



## OUR OPINIONS



- The camera has a very flat profile, it's only 51 mm out from the ceiling.



- Quite weak range of LED illumination.

