

Code: IPC-HDBW5241R-ASE-0280B

# IP VANDALPROOF CAMERA **IPC-HDBW5241R-ASE-0280B** - 1080p 2.8 mm DAHUA

Net: **180.56 USD** Gross: **222.09 USD**

IP camera with efficient H.264 / H.265 image compression algorithm for clear and smooth video streaming at maximal resolution of 1080p.

PoE powering possibility, compatible with the 802.3af standard makes the device more universal and easier to install. Camera is according to IP67 Index of Protection norm.

The device is equipped with ePoE technology which enables transmission up to 800 m at a speed of 10 Mb/s or 300 m at a speed of 100 Mb/s via cat. 5 twisted-pair. The "Starlight" series cameras provide a clear color image even at very poor lighting.



## SPECIFICATION

Standard:	TCP/IP
Sensor:	1/2.8 " STARVIS™ CMOS
Matrix size:	2.1 Mpx
Resolution:	1920 x 1080 - 1080p , 1280 x 960 - 1.3 Mpx , 1280 x 720 - 720p
Operation modes:	Main and sub streams may be in any configuration  Firmware 2.800.0000000.0.R, build: 2019-05-21 • Main stream : 1920 x 1080, 1280 x 960, 1280 x 720 • Sub stream : 704 x 576, 640 x 480, 352 x 288 • Sub stream 2 : 1920 x 1080, 1280 x 720, 704 x 576, 640 x 480
Lens:	2.8 mm
View angle:	• 106 ° (manufacturer data) • 100 ° (our tests result)
Range of IR illumination:	50 m
RS-485 interface:	—
Memory card slot:	Micro SD memory cards up to 256GB support (possible local recording)
Image compression method:	H.265+ / H.265 / H.264+ / H.264 / MJPEG
Alarm inputs / outputs:	1 / 1

Audio:	<ul style="list-style-type: none"> <li>• External microphone input</li> <li>• Audio output</li> <li>• Bi-directional audio streaming support</li> <li>• Audio detection</li> </ul>
Bitrate:	32 ... 8192 kbps - H.264 19 ... 7424 kbps - H.265
Main stream frame rate:	25 fps @ 1080p
Network interface:	10/100 Base-T (RJ-45)
Network protocols:	HTTP, HTTPS, TCP, ARP, RTSP, RTP, UDP, SMTP, FTP, DHCP, DNS, DDNS, PPPoE, IPv4/IPv6, QoS, UPnP, NTP, Multicast, ICMP, IGMP, IEEE 802.1x
WEB Server:	Built-in
Max. number of on-line users:	20
ONVIF:	18.06
Main features:	<ul style="list-style-type: none"> <li>• WDR - 120 dB - Wide Dynamic Range</li> <li>• 3D-DNR - Digital Noise Reduction</li> <li>• ROI - improve the quality of selected parts of image</li> <li>• F-DNR (Defog) - Reduction of image noise caused by precipitation</li> <li>• BLC/HLC - Back Light / High Light Compensation</li> <li>• Possibility to change the resolution, quality and bit rate</li> <li>• Motion Detection</li> <li>• Configurable Privacy Zones</li> <li>• ICR - Movable InfraRed filter</li> <li>• Mirror - Mirror image</li> <li>• Heat map - the selection in the image by corresponding colors the areas with different traffic</li> <li>• IVS analysis : crossing the line (tripwire), scene changing, intrusion - classification of people and vehicles, abandoned/missing object, face detection, people counting - detection and maintenance of 4 independent areas, detection of people gathering</li> </ul>
Mobile phones support:	Port no.: 37777 or access by a cloud (P2P) <ul style="list-style-type: none"> <li>• Android: Free application <a href="#">gDMSS Plus</a></li> <li>• iOS (iPhone): Free application <a href="#">iDMSS Plus</a></li> </ul>
Default admin user / password:	admin / - The administrator password should be set at the first start
Default IP address:	192.168.1.108
Web browser access ports:	80, 37777
PC client access ports:	37777
Mobile client access ports:	37777
Port ONVIF:	80
RTSP URL:	rtsp://admin:admin@192.168.1.108:554/cam/realmonitor?channel=1&subtype=0 - Main stream rtsp://admin:admin@192.168.1.108:554/cam/realmonitor?channel=1&subtype=1 - Sub stream
Power supply:	<ul style="list-style-type: none"> <li>• PoE (802.3af),</li> <li>• ePoE,</li> <li>• 12 V DC / 460 mA</li> </ul>
Power consumption:	≤ 5.5 W
Housing:	Dome - Metal
Color:	White
"Index of Protection":	IP67
Vandal-proof:	IK10
Operation temp:	-30 °C ... 60 °C
Weight:	0.45 kg
Dimensions:	Ø 122 x 89 mm

Supported languages:	Polish, English, Czech, French, Spanish, Dutch, German, Portuguese, Russian, Italian
Manufacturer / Brand:	DAHUA
Guarantee:	<b>3 years</b>

## PRESENTATION

Camera view after remove the Dome cover:



Memory card slot:



Mounting dimensions:



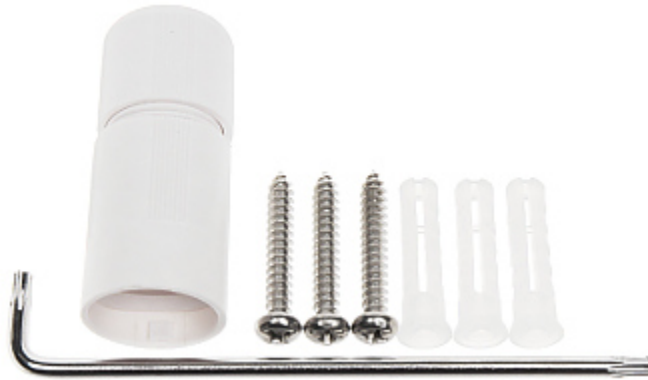
Camera connectors:



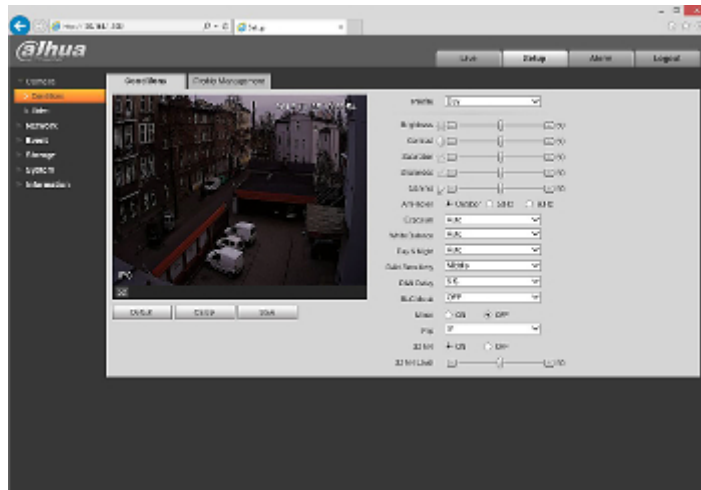
Connectors description:



In the kit:



Example captures of device interface:



## OUR TESTS

Camera image at artificial illumination (about 30Lux):



DELTA-OPTI Monika Matysiak; <https://www.delta.poznan.pl>  
POL; 60-713 Poznań; Graniczna 10  
e-mail: delta-opti@delta.poznan.pl; tel: +(48) 61 864 69 60

Camera image at night conditions with internal built-in IR illuminator on:



Camera image at direct strong light opposite to camera:

