

Code: IPC-HDBW1431E-0280B-S4

IP VANDALPROOF CAMERA **IPC-HDBW1431E-0280B-S4** - 4 Mpx 2.8 mm DAHUA

Net: **103.38 EUR** Gross: **127.16 EUR**



Entry series IP camera with efficient H.265 / H.264 image compression algorithm for clear and smooth video streaming at maximal resolution of 4 MPx.

PoE powering possibility, compatible with the 802.3af standard makes the device more universal and easier to install.

Camera is according to IP67 Index of Protection norm.

SPECIFICATION

| | |
|---------------------------|---|
| Standard: | TCP/IP |
| Sensor: | 1/3 " Progressive Scan CMOS |
| Matrix size: | 4 Mpx |
| Scanning system: | Progressive |
| Resolution: | 2688 x 1520 - 4 Mpx , 2560 x 1440 - 3.7 Mpx , 2304 x 1296 - 3 Mpx , 1920 x 1080 - 1080p , 1280 x 960 - 1.3 Mpx , 1280 x 720 - 720p |
| Lens: | 2.8 mm |
| View angle: | • 93 ° (manufacturer data) • 91 ° (our tests result) |
| Range of IR illumination: | 30 m |
| RS-485 interface: | — |
| Memory card slot: | — |
| Image compression method: | H.265+ / H.265 / H.264+ / H.264 / MJPEG |
| Alarm inputs / outputs: | — |
| Audio: | — |
| Bitrate: | 32 ... 10240 kbps - H.264 12 ... 8448 kbps - H.265 |
| Main stream frame rate: | 20 fps @ 4 Mpx 25 fps @ 3.7 Mpx |

DELTA-OPTI Monika Matysiak; <https://www.delta.poznan.pl>
POL; 60-713 Poznań; Graniczna 10
e-mail: delta-opti@delta.poznan.pl; tel: +(48) 61 864 69 60

| | |
|--------------------------------|--|
| Network interface: | 10/100 Base-T (RJ-45) |
| Network protocols: | HTTP, HTTPS, TCP, ARP, RTSP, RTP, UDP, SMTP, FTP, DHCP, DNS, DDNS, PPPoE, IPv4/IPv6, QoS, UPnP, NTP, IEEE 802.1x, RTMP, Multicast, ICMP, IGMP, TLS |
| WEB Server: | Built-in |
| Max. number of on-line users: | 20 |
| ONVIF: | 18.12 |
| Main features: | <ul style="list-style-type: none"> • WDR - 120 dB - Wide Dynamic Range • 3D-DNR - Digital Noise Reduction • ROI - improve the quality of selected parts of image • BLC/HLC - Back Light / High Light Compensation • Possibility to change the resolution, quality and bit rate • Motion Detection • Configurable Privacy Zones • Mirror - Mirror image |
| Mobile phones support: | Port no.: 37777 or access by a cloud (P2P) <ul style="list-style-type: none"> • Android: Free application gDMSS Plus • iOS (iPhone): Free application iDMSS Plus |
| Default admin user / password: | admin / - The administrator password should be set at the first start |
| Default IP address: | 192.168.1.108 |
| Web browser access ports: | 80, 37777 |
| PC client access ports: | 37777 |
| Mobile client access ports: | 37777 |
| Port ONVIF: | 80 |
| RTSP URL: | rtsp://admin:hasło@192.168.1.108:554/cam/realmonitor?channel=1&subtype=0 - Main stream rtsp://admin:hasło@192.168.1.108:554/cam/realmonitor?channel=1&subtype=1 - Sub stream |
| Power supply: | <ul style="list-style-type: none"> • PoE (802.3af), • 12 V DC / 460 mA |
| Power consumption: | < 5.5 W |
| Color: | White |
| Housing: | Dome - Metal |
| Vandal-proof: | IK10 |
| "Index of Protection": | IP67 |
| Operation temp: | -30 °C ... 60 °C |
| Weight: | 0.35 kg |
| Dimensions: | Ø 110 x 81 mm |
| Supported languages: | Polish, English, Czech, French, Spanish Dutch, German, Portuguese, Russian, Italian |
| Manufacturer / Brand: | DAHUA |
| Guarantee: | 3 years |

PRESENTATION



DELTA-OPTI Monika Matysiak; <https://www.delta.poznan.pl>
 POL; 60-713 Poznań; Graniczna 10
 e-mail: delta-opti@delta.poznan.pl; tel: +(48) 61 864 69 60

Camera view after remove the Dome cover:



Mounting dimensions:



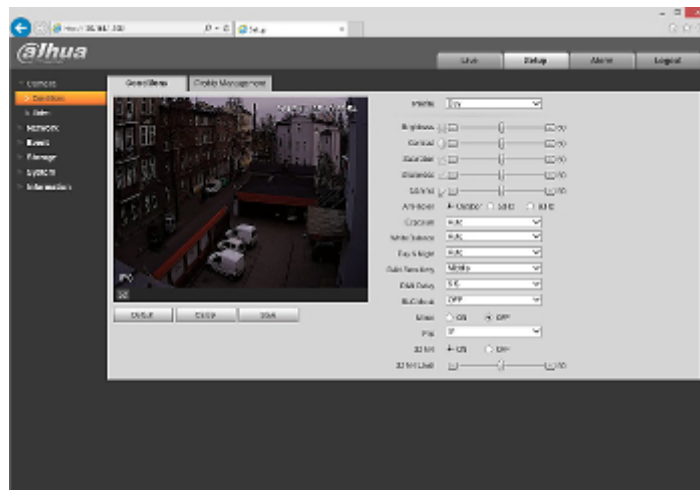
See how to initialize DAHUA cameras:

:

In the kit:



Example captures of device interface:



OUR TESTS

Camera image at artificial illumination (about 30Lux):



DELTA-OPTI Monika Matysiak; <https://www.delta.poznan.pl>
POL; 60-713 Poznań; Graniczna 10
e-mail: delta-opti@delta.poznan.pl; tel: +(48) 61 864 69 60

Camera image at night conditions with internal built-in IR illuminator on:



Camera image at direct strong light opposite to camera:

