

Code: IPC328LE-ADF28K-G

IP VANDALPROOF CAMERA **IPC328LE-ADF28K-G** - 8.3 Mpx 4K UHD 2.8 mm UNIVIEW

Net: **291.47 EUR** Gross: **291.47 EUR**



IP camera with efficient Ultra 265 image compression algorithm for clear and smooth video streaming at maximal resolution of 3840 x 2160 - 4K.

PoE powering possibility, compatible with the 802.3af standard makes the device more universal and easier to install. The range of IR illumination according to the manufacturer data, depends on outer conditions (visibility - air transparency, environment, wall colors ie. scene reflectance).

The Uniview series product has been designed to minimize costs while maintaining high quality and ease of use.

SPECIFICATION

| | |
|---------------------------|--|
| Standard: | TCP/IP |
| Sensor: | 1/2.7 " Progressive Scan CMOS |
| Matrix size: | 8.3 Mpx |
| Resolution: | 3840 x 2160 - 8.3 Mpx 4K UHD , 3072 x 1728 - 5 Mpx , 2560 x 1440 - 3.7 Mpx , 1920 x 1080 - 1080p |
| Lens: | 2.8 mm |
| View angle: | <ul style="list-style-type: none">• 113 ° (manufacturer data)• 93 ° (our tests result) |
| Range of IR illumination: | 30 m |
| S/N ratio: | > 56 dB |
| RS-485 interface: | — |
| Memory card slot: | Micro SD memory cards up to 256GB support (possible local recording) |
| Image compression method: | Ultra 265 / H.265 / H.264 / MJPEG |
| Alarm inputs / outputs: | — |
| Audio: | <ul style="list-style-type: none">• Microphone built-in• Audio transmission via network• Audio detection |
| Main stream frame rate: | 20 fps @ 8.3 Mpx 25 fps @ 5 Mpx |

DELTA-OPTI Monika Matysiak; <https://www.delta.poznan.pl>
POL; 60-713 Poznań; Graniczna 10
e-mail: delta-opti@delta.poznan.pl; tel: +(48) 61 864 69 60

| | |
|--------------------------------|---|
| Network interface: | 10/100 Base-T (RJ-45) |
| Network protocols: | IPv4/IPv6, IGMP, ICMP, ARP, TCP, UDP, DHCP, RTP, RTSP, RTCP, RTMP, DNS, DDNS, NTP, FTP, UPnP, HTTP, HTTPS, SMTP, SSL / TLS, SNMP, IEEE 802.1x |
| WEB Server: | Built-in |
| Max. number of on-line users: | 32 |
| ONVIF: | ✓ |
| Mobile phones support: | Access by a cloud (P2P) <ul style="list-style-type: none"> • Android: Free application EZView • iOS (iPhone): Free application EZView |
| Default IP address: | DHCP or 192.168.1.13 |
| Default admin user / password: | admin / 123456 |
| Web browser access ports: | 80, 554 |
| PC client access ports: | Port no.: 80 or access by a cloud (P2P) - PC: Free application EZStation |
| Mobile client access ports: | 80 |
| Port ONVIF: | 80 |
| RTSP URL: | rtsp://192.168.1.13:554/unicast/c1/s0/live - Main stream rtsp://192.168.1.13:554/unicast/c1/s1/live - Sub stream |
| Main features: | <ul style="list-style-type: none"> • WDR - 120 dB - Wide Dynamic Range • 2D-DNR, 3D-DNR - Digital Noise Reduction • F-DNR (Defog) - Reduction of image noise caused by precipitation • ROI - improve the quality of selected parts of image • ANR - Automatic Network Replenishment allows to save image to the card when the network connection with DVR is break (network failure) and next synchronize its • NAS - Network Attached Storage support - allows to connect memory resources directly to the computer network • BLC/HLC - Back Light / High Light Compensation • Possibility to change the resolution, quality and bit rate • Mirror - Mirror image • Privacy zones - max. 4 • Motion detection with human/vehicle silhouette recognition • Sharpness - sharper image outlines • Corridor mode - useful for monitoring corridors, entrance gates and narrow rooms • Intelligent Image Analysis : intrusion, crossing the line (tripwire) |
| Power supply: | <ul style="list-style-type: none"> • PoE (802.3af), • 12 V DC / 380 mA |
| Power consumption: | ≤ 4.5 W |
| Housing: | Dome, Metal |
| Color: | White |
| "Index of Protection": | IP67 |
| Vandal-proof: | IK10 |
| Operation temp: | -30 °C ... 60 °C |
| Weight: | 0.42 kg |
| Dimensions: | Ø 109 x 83 mm |
| Supported languages: | Polish, English, Czech, Spanish, Dutch, French, German, Portuguese, Slovak, Hungarian, Italian |
| Manufacturer / Brand: | UNIVIEW |
| Guarantee: | 3 years |

PRESENTATION

Internal view of the housing:



DELTA-OPTI Monika Matysiak; <https://www.delta.poznan.pl>
POL; 60-713 Poznań; Graniczna 10
e-mail: delta-opti@delta.poznan.pl; tel: +(48) 61 864 69 60



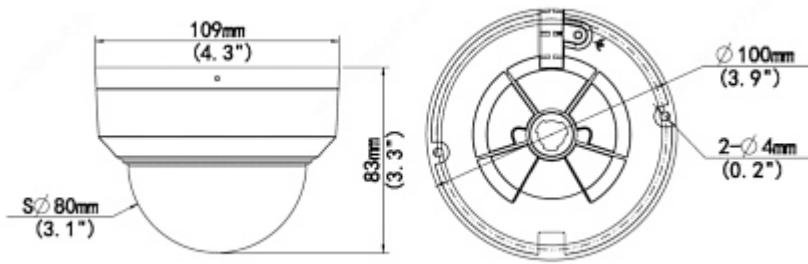
Memory card slot:



Mounting side view:



Dimensions:



In the kit:



OUR TESTS

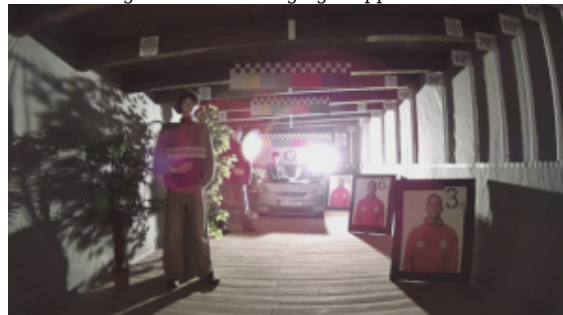
Camera image at artificial illumination (about 30Lux):



Camera image at night conditions with internal built-in IR illuminator on:



Camera image at direct strong light opposite to camera:



DELTA-OPTI Monika Matysiak; <https://www.delta.poznan.pl>
 POL; 60-713 Poznań; Graniczna 10
 e-mail: delta-opti@delta.poznan.pl; tel: +(48) 61 864 69 60

PACKAGE

| | |
|----------------------------------|--------------------|
| Dimensions (L x W x H): 0x0x0 mm | Gross Weight: 0 kg |
|----------------------------------|--------------------|

