

Code: IPC-HDBW8231E-ZH-S2

IP VANDALPROOF CAMERA **IPC-HDBW8231E-ZH-S2** - 1080p, 2.7 ... 12 mm - **MOTOZOOM** DAHUA

Net: **619.11 EUR** Gross: **761.51 EUR**

IP camera with efficient H.264 / H.265 image compression algorithm for clear and smooth video streaming at maximal resolution of 1920 x 1080 (1080p). The used motozoom lens with 2.7 ... 12 mm focal length allows to remote view angle adjustment. The range of IR illumination according to the manufacturer data, depends on outer conditions (visibility - air transparency, environment, wall colors ie. scene reflectance). PoE powering possibility, compatible with the 802.3at standard makes the device more universal and easier to install. Thanks to the "Starlight" technology used, the camera only needs very low lighting to obtain a clear color image.



SPECIFICATION

Standard:	TCP/IP
Sensor:	1/2.8 " STARVIS™ CMOS
Matrix size:	2.1 Mpx
Resolution:	1920 x 1080 - 1080p , 1280 x 960 - 1.3 Mpx , 1280 x 720 - 720p ,
Lens:	2.7 ... 12 mm - Motozoom
View angle:	• 110 ° ... 36 ° (manufacturer data) • 115 ° ... 47 ° (our tests result)
Range of IR illumination:	50 m
S/N ratio:	> 50 dB
RS-485 interface:	✓
Memory card slot:	Micro SD memory cards up to 128GB support (possible local recording)
Image compression method:	H.265+ / H.265 / H.264+ / H.264 / MJPEG
Alarm inputs / outputs:	2 / 1
Audio:	• 2 x External microphone input, • Audio output, • Bi-directional audio streaming support, • Audio detection
Bitrate:	24 kb/s ... 10240 kb/s - H.264 14 ... 6144 kbps - H.265

DELTA-OPTI Monika Matysiak; <https://www.delta.poznan.pl>
POL; 60-713 Poznań; Graniczna 10
e-mail: delta-opti@delta.poznan.pl; tel: +(48) 61 864 69 60

Network interface:	100/1000 Base-T (RJ-45)
Network protocols:	HTTP, HTTPS, TCP, ARP, RTSP, RTP, UDP, SMTP, FTP, DHCP, DNS, DDNS, PPPoE, IPv4/IPv6, QoS, UPnP, NTP, Bonjour, IEEE 802.1x, Multicast, ICMP, IGMP, SNMP
WEB Server:	Built-in, Web Viewer
Max. number of on-line users:	20
ONVIF:	16.12
Main stream frame rate:	50 fps @ 1080p
Mobile phones support:	Port no.: 37777 or access by a cloud (P2P) <ul style="list-style-type: none"> • Android: Free application DMSS • iOS (iPhone): Free application DMSS
Default IP address:	192.168.1.108
Default admin user / password:	admin / - The administrator password should be set at the first start
Web browser access ports:	80, 37777
PC client access ports:	37777
Mobile client access ports:	37777
Port ONVIF:	80
RTSP URL:	rtsp://admin:haslo@192.168.1.108:554/cam/realmonitor?channel=1&subtype=0 - Main stream rtsp://admin:haslo@192.168.1.108:554/cam/realmonitor?channel=1&subtype=1 - Sub stream
Main features:	<ul style="list-style-type: none"> • Motozoom lens • U-WDR - 140 dB - Wide Dynamic Range • EIS - Electronic Image Stabilization • 3D-DNR - Digital Noise Reduction • F-DNR (Defog) - Reduction of image noise caused by precipitation • ROI - improve the quality of selected parts of image • BLC - configurable Back Light Compensation • HLC - High Light Compensation (spot) • D-ZOOM - Digital Zoom - 16x • ICR - Movable InfraRed filter • WB - White Balance (ATW/AWB/manual/indoor/outdoor) • Motion Detection • Configurable Privacy Zones • Mirror - Mirror image • Power output : 12 V DC • Sharpness - sharper image outlines • Heat map - the selection in the image by corresponding colors the areas with different traffic • IVS analysis : crossing the line (tripwire), intrusion, abandoned/missing object, face detection, people counting, heat map
Power supply:	<ul style="list-style-type: none"> • PoE (802.3at), • 12 V DC / 1500 mA - Heater on, • 24 V AC / 750 mA - Heater on
Power consumption:	≤ 18 W
Housing:	Dome - Metal
Color:	White
"Index of Protection":	IP67
Vandal-proof:	IK10
Operation temp:	-40 °C ... 60 °C
Weight:	0.91 kg
Dimensions:	Ø 159 x 118 mm
Supported languages:	English
Manufacturer / Brand:	DAHUA

Guarantee:

3 years

PRESENTATION

Camera view after remove the Dome cover:

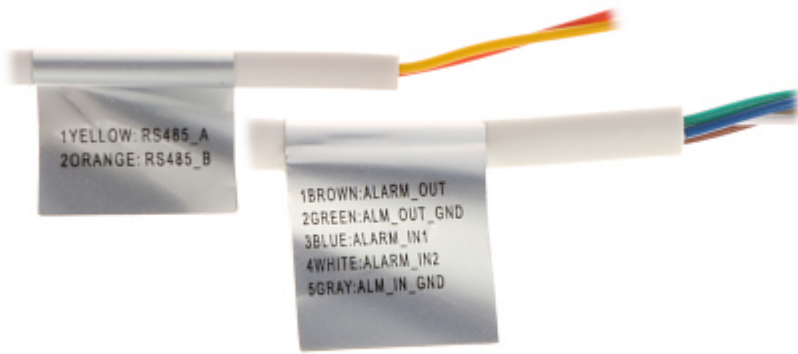




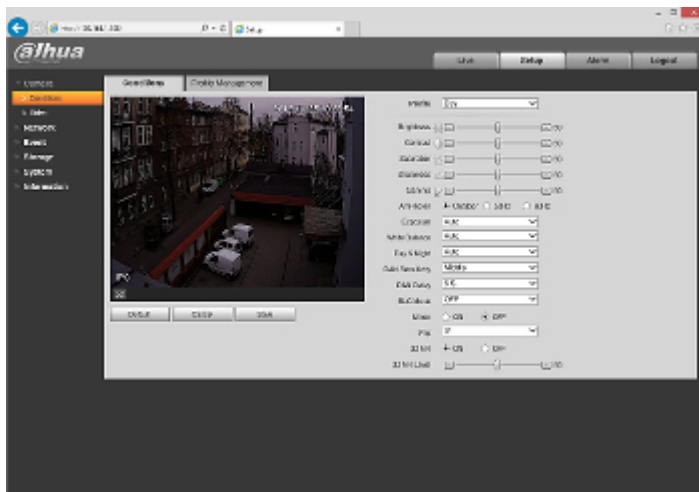
Mounting side view:



Camera with mounted bracket (bracket included):

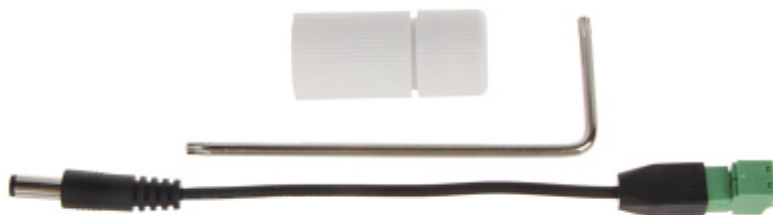


Example captures of device interface:



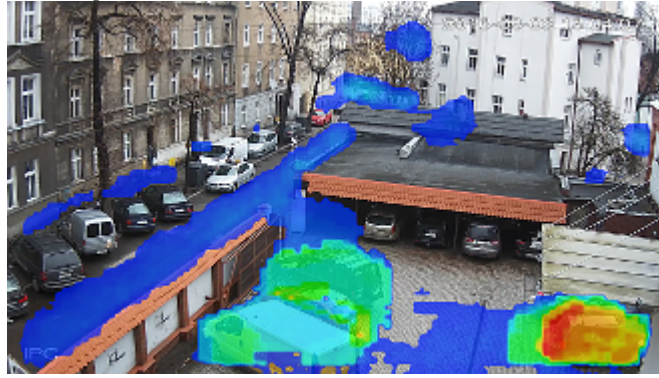
See how to initialize DAHUA cameras:

:
In the kit:

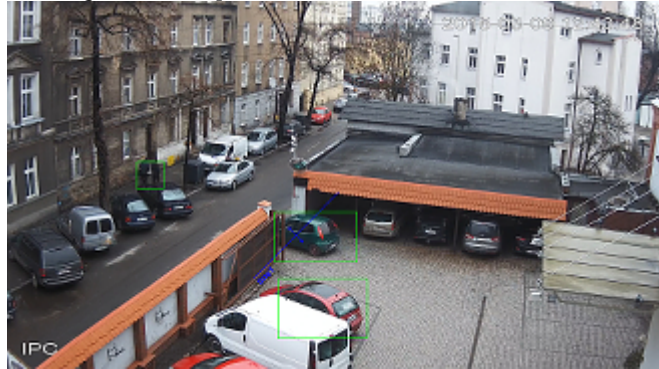


OUR TESTS

Heat map function:



Crossing the line (tripwire) function:



Camera image at artificial illumination (about 30Lux):



Camera image at night conditions with internal built-in IR illuminator on:



Camera image at direct strong light opposite to camera:





DELTA-OPTI Monika Matysiak; <https://www.delta.poznan.pl>
POL; 60-713 Poznań; Graniczna 10
e-mail: delta-opti@delta.poznan.pl; tel: +(48) 61 864 69 60