

Code: IPC-HDBW5241E-ZE-27135-DC12AC24V

# IP VANDALPROOF CAMERA **IPC-HDBW5241E-ZE-27135-DC12AC24V** - 1080p 2.7 ... 13.5 mm - **MOTOZOOM** DAHUA

Net: **429.82 EUR** Gross: **528.68 EUR**

IP camera with efficient H.264 / H.265 image compression algorithm for clear and smooth video streaming at maximal resolution of 1080p. The used motozoom lens with 2.7 ... 13.5 mm focal length allows to remote view angle adjustment.

The range of IR illumination according to the manufacturer data, depends on outer conditions (visibility - air transparency, environment, wall colors ie. scene reflectance). Thanks to the "Starlight" technology used, the camera only needs very low lighting to obtain a clear color image.

PoE powering possibility, compatible with the 802.3af standard makes the device more universal and easier to install. The device is equipped with ePoE technology which enables transmission up to 800 m at a speed of 10 Mb/s or 300 m at a speed of 100 Mb/s via cat. 5e twisted-pair.

The camera has extensive functions of intelligent image analysis.



## SPECIFICATION

|                               |   |
|-------------------------------|---|
| Standard:                     | TCP/IP  |
| Sensor:                       | 1/2.8 " STARVIS™ CMOS   |
| Matrix size:                  | 2.1 Mpx   |
| Resolution:                   | 1920 x 1080 - 1080p<br>1280 x 960 - 1.3 Mpx<br>1280 x 720 - 720p  |
| Lens:                         | 2.7 ... 13.5 mm - <b>Motozoom</b>   |
| View angle:                   | <ul style="list-style-type: none"><li>• 109 ° ... 30 ° (manufacturer data)</li><li>• 104 ° ... 31 ° (our tests result)</li></ul>  |
| Range of IR illumination:     | 40 m  |
| RS-485 interface:             | —   |
| Memory card slot:             | Micro SD memory cards up to 256GB support (possible local recording)  |
| Image compression method:     | H.265+ / H.265 / H.264+ / H.264 / MJPEG   |
| Alarm inputs / outputs:       | 1 / 1   |
| Audio:                        | <ul style="list-style-type: none"><li>• External microphone input</li><li>• Audio output</li><li>• Audio detection</li></ul>  |
| Network interface:            | 10/100 Base-T (RJ-45)   |
| Network protocols:            | IPv4/IPv6, HTTP, HTTPS, TCP, UDP, ARP, RTP, RTSP, RTCP, RTMP, SMTP, FTP, SFTP, DHCP, DNS, DDNS, PPPoE, SNMP, QoS, UPnP, NTP, Multicast, ICMP, IGMP, NFS, PPPoE, IEEE 802.1x, SNMP |
| WEB Server:                   | Built-in, Web Viewer  |
| Max. number of on-line users: | 20  |

DELTA-OPTI Monika Matysiak; <https://www.delta.poznan.pl>  
POL; 60-713 Poznań; Graniczna 10  
e-mail: [delta-opti@delta.poznan.pl](mailto:delta-opti@delta.poznan.pl); tel: +(48) 61 864 69 60

|                                |  |
|--------------------------------|--|
| ONVIF:                         | 18.12  |
| Main stream frame rate:        | 25 fps @ 1080p   |
| Mobile phones support:         | Port no.: 37777 or access by a cloud (P2P)<br><ul style="list-style-type: none"> <li>• Android: Free application <a href="#">DMSS</a></li> <li>• iOS (iPhone): Free application <a href="#">DMSS</a></li> </ul>  |
| Default IP address:            | 192.168.1.108  |
| Default admin user / password: | admin / -<br>The administrator password should be set at the first start   |
| Web browser access ports:      | 80, 37777  |
| PC client access ports:        | 37777  |
| Mobile client access ports:    | 37777  |
| Port ONVIF:                    | 80   |
| RTSP URL:                      | rtsp://admin:haslo@192.168.1.108:554/cam/realmonitor?channel=1&subtype=0 - Main stream<br>rtsp://admin:haslo@192.168.1.108:554/cam/realmonitor?channel=1&subtype=1 - Sub stream  |
| Main features:                 | <ul style="list-style-type: none"> <li>• Motozoom lens</li> <li>• WDR - 120 dB - Wide Dynamic Range</li> <li>• 3D-DNR - Digital Noise Reduction</li> <li>• EIS - Electronic Image Stabilization</li> <li>• F-DNR (Defog) - Reduction of image noise caused by precipitation</li> <li>• ROI - improve the quality of selected parts of image</li> <li>• BLC - configurable Back Light Compensation</li> <li>• HLC - High Light Compensation (spot)</li> <li>• ICR - Movable InfraRed filter</li> <li>• Motion Detection</li> <li>• Configurable Privacy Zones</li> <li>• Auto White Balance</li> <li>• Sharpness - sharper image outlines</li> <li>• Mirror - Mirror image</li> <li>• Heat map - the selection in the image by corresponding colors the areas with different traffic</li> <li>• IVS analysis : crossing the line (tripwire), intrusion - classification of people and vehicles, abandoned/missing object, illegal parking, detection of people gathering, people counting - support for 4 independent detection areas, face detection - supports 6 types of facial attributes extraction</li> </ul> |
| Power supply:                  | <ul style="list-style-type: none"> <li>• PoE (802.3af),</li> <li>• ePoE,</li> <li>• 12 V DC / 980 mA,</li> <li>• 24 V AC / 490 mA</li> </ul>   |
| Power consumption:             | ≤ 11.8 W   |
| Housing:                       | Dome - Metal   |
| Color:                         | White  |
| "Index of Protection":         | IP67   |
| Vandal-proof:                  | IK10   |
| Operation temp:                | -30 °C ... 60 °C   |
| Weight:                        | 0.88 kg  |
| Dimensions:                    | Ø 159 x 118 mm   |
| Supported languages:           | Polish, English, Czech, French, Spanish, Dutch, German, Portuguese, Russian, Italian   |
| Manufacturer / Brand:          | DAHUA  |
| Guarantee:                     | <b>3 years</b>   |

## PRESENTATION

Camera view after remove the Dome cover:



DELTA-OPTI Monika Matysiak; <https://www.delta.poznan.pl>  
POL; 60-713 Poznań; Graniczna 10  
e-mail: delta-opti@delta.poznan.pl; tel: +(48) 61 864 69 60

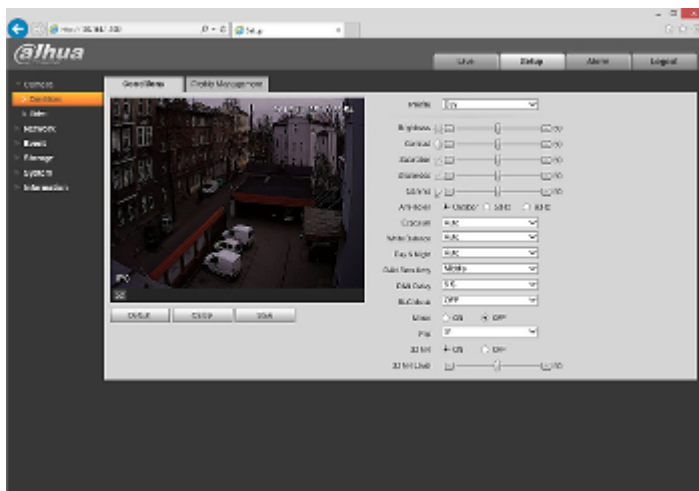




Mounting side view:



Example captures of device interface:



See how to initialize DAHUA cameras:

:

In the kit:



## OUR TESTS

Camera image at artificial illumination (about 30Lux):



Camera image at night conditions with internal built-in IR illuminator on:



Camera image at direct strong light opposite to camera:



## OUR OPINIONS



DELTA-OPTI Monika Matysiak; <https://www.delta.poznan.pl>  
POL; 60-713 Poznań; Graniczna 10  
e-mail: delta-opti@delta.poznan.pl; tel: +(48) 61 864 69 60

- The camera has extensive functions of intelligent image analysis.
- Thanks to the "Starlight" technology used, the camera only needs very low lighting to obtain a clear color image.

