

Code: BCS-V-EIP54VSR4-AI2

# IP VANDALPROOF CAMERA **BCS-V-EIP54VSR4-AI2** - 4 Mpx 2.8 ... 12 mm - **MOTOZOOM** BCS View

Net: **422.57 EUR** Gross: **519.76 EUR**



IP camera with efficient H.265 / H.264 image compression algorithm for clear and smooth video streaming at maximal resolution of 4 MPx. Due to above it is perfect solution for surveillance systems requiring persons or vehicles recognition.

The range of IR illumination according to the manufacturer data, depends on outer conditions (visibility - air transparency, environment, wall colors ie. scene reflectance).

PoE powering possibility, compatible with the 802.3af standard makes the device more universal and easier to install.

Camera is according to IP66 Index of Protection norm.

## SPECIFICATION

Standard:	TCP/IP
Sensor:	1/3 " Progressive Scan CMOS
Matrix size:	4 Mpx
Resolution:	2688 x 1520 - 4 Mpx , 1920 x 1080 - 1080p , 1280 x 720 - 720p
Lens:	2.8 ... 12 mm F1.4 - <b>Motozoom</b>
View angle:	<ul style="list-style-type: none"><li>• 108 ° ... 30 ° (manufacturer data)</li><li>• 98 ° ... 44 ° (our tests result)</li></ul>
Range of IR illumination:	40 m
RS-485 interface:	—
Memory card slot:	Micro SD memory cards up to 256GB support (possible local recording)
Image compression method:	H.265+ / H.265 / H.264+ / H.264 / MJPEG
Main stream frame rate:	25 fps @ 4 Mpx
Alarm inputs / outputs:	1 / 1
Audio:	<ul style="list-style-type: none"><li>• External microphone input</li><li>• Audio output</li><li>• Bi-directional audio streaming support</li></ul>
Network interface:	10/100 Base-T (RJ-45)

DELTA-OPTI Monika Matysiak; <https://www.delta.poznan.pl>  
POL; 60-713 Poznań; Graniczna 10  
e-mail: [delta-opti@delta.poznan.pl](mailto:delta-opti@delta.poznan.pl); tel: +(48) 61 864 69 60

Network protocols:	TCP/IP, ICMP, HTTP, HTTPS, FTP, DHCP, DNS, DDNS, RTP, RTSP, RTCP, NTP, UPnP, SMTP, IGMP, IEEE 802.1x, QoS, IPv4/IPv6, Bonjour, UDP, SSL / TLS, P2P
WEB Server:	Built-in
Max. number of on-line users:	6
ONVIF:	✓
Mobile phones support:	Port no.: 8000 or access by a cloud (P2P) <ul style="list-style-type: none"> <li>• Android: Free application <a href="#">BCS View</a></li> <li>• iOS (iPhone): Free application <a href="#">BCS View</a></li> </ul>
Default admin user / password:	admin / -
Default IP address:	192.168.1.64
Web browser access ports:	80
PC client access ports:	Port no.: 8000 or access by a cloud (P2P)
Mobile client access ports:	8000
Port ONVIF:	80
RTSP URL:	<ul style="list-style-type: none"> <li>• Main stream : rtsp://user:password@192.168.1.64:554/Streaming/Channels/101/</li> <li>• Sub stream : rtsp://user:password@192.168.1.64:554/Streaming/Channels/102/</li> </ul>
Main features:	<ul style="list-style-type: none"> <li>• WDR - 120 dB - Wide Dynamic Range</li> <li>• 3D-DNR - Digital Noise Reduction</li> <li>• ROI - improve the quality of selected parts of image</li> <li>• ICR - Movable InfraRed filter</li> <li>• BLC/HLC - Back Light / High Light Compensation</li> <li>• Day/Night mode (color/b&amp;w/auto)</li> <li>• Auto White Balance</li> <li>• AutoFocus</li> <li>• AGC - Automatic Gain Control</li> <li>• AES - Auto Electronic Shutter</li> <li>• Mirror - Mirror image</li> <li>• Configurable Privacy Zones</li> <li>• Motion Detection</li> <li>• Sharpness - sharper image outlines</li> <li>• Intelligent Image Analysis : intrusion, crossing the line (tripwire), detection of entry into the area / exit from the area, scene changing, face detection, object detection (people, vehicle)</li> <li>• RESET button</li> </ul>
Power supply:	<ul style="list-style-type: none"> <li>• PoE (802.3af),</li> <li>• 12 V DC / 920 mA</li> </ul>
Power consumption:	<ul style="list-style-type: none"> <li>• ≤ 12.5 W @ PoE (802.3af)</li> <li>• ≤ 11 W @ 12 V DC</li> </ul>
Housing:	Dome - Metal
Color:	White
"Index of Protection":	IP66
Vandal-proof:	IK10
Operation temp:	-30 °C ... 60 °C
Weight:	1.14 kg
Dimensions:	Ø 136 x 146 mm
Supported languages:	English, Polish, Bulgarian, Croatian, Czech, Danish, Estonian, Finnish, French, Greek, Spanish, Dutch, Lithuanian, Latvian, German, Norwegian, Portuguese, Russian, Romanian, Serbian, Slovak, Slovenian, Swedish, Turkish, Ukrainian, Hungarian, Italian
Manufacturer / Brand:	BCS View
Guarantee:	<b>3 years</b>

## PRESENTATION



DELTA-OPTI Monika Matysiak; <https://www.delta.poznan.pl>  
POL; 60-713 Poznań; Graniczna 10  
e-mail: delta-opti@delta.poznan.pl; tel: +(48) 61 864 69 60

Side view:



Memory card slot:



Camera connectors:



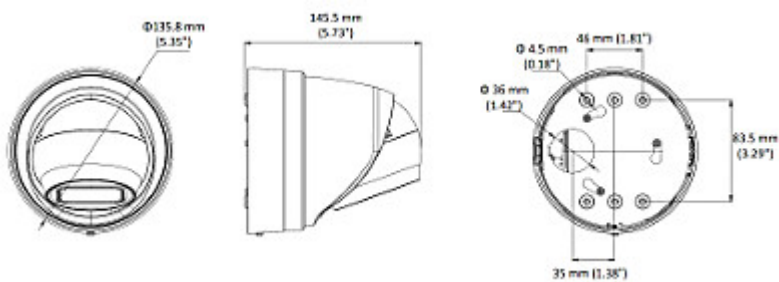
Mounting side view:



DELTA-OPTI Monika Matysiak; <https://www.delta.poznan.pl>  
POL; 60-713 Poznań; Graniczna 10  
e-mail: delta-opti@delta.poznan.pl; tel: +(48) 61 864 69 60



Dimensions:



In the kit:

DELTA-OPTI Monika Matysiak; <https://www.delta.poznan.pl>  
 POL; 60-713 Poznań; Graniczna 10  
 e-mail: delta-opti@delta.poznan.pl; tel: +(48) 61 864 69 60



## OUR TESTS

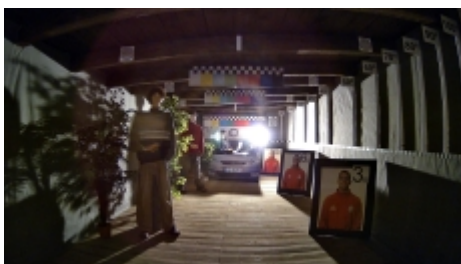
Camera image at artificial illumination (about 30Lux):



Camera image at night conditions with internal built-in IR illuminator on:



Camera image at direct strong light opposite to camera:



**PACKAGE**

Dimensions (L x W x H): 0x0x0 mm	Gross Weight: 0 kg
----------------------------------	--------------------

