

Code: IPC-HFW5442T-ASE-0360B

IP CAMERA **IPC-HFW5442T-ASE-0360B** - 4 Mpx 3.6 mm DAHUA

Net: **333.82 USD** Gross: **410.60 USD**

IP camera with efficient H.265 / H.264 image compression algorithm for clear and smooth video streaming at maximal resolution of 4 MPx. Included camera software enables management and integrated monitoring of many network cameras.

The device is equipped with ePoE technology which enables transmission up to 800 m at a speed of 10 Mb/s or 300 m at a speed of 100 Mb/s via cat. 5 twisted-pair. The "Starlight" series cameras provide a clear color image even at very poor lighting. PoE powering possibility, compatible with the 802.3af standard makes the device more universal and easier to install. The camera has extensive functions of intelligent image analysis.



SPECIFICATION

| | |
|---------------------------|--|
| Standard: | TCP/IP |
| Sensor: | 1/1.8 " Progressive Scan CMOS |
| Matrix size: | 4 Mpx |
| Resolution: | 2688 x 1520 - 4 Mpx , 2304 x 1296 - 3 Mpx , 1920 x 1080 - 1080p , 1280 x 960 - 1.3 Mpx , 1280 x 720 - 720p |
| Operation modes: | Main and sub streams may be in any configuration Firmware 2.680.0000000.5.R, build: 2019-04-04 • Main stream : 2688 x 1520, 2304 x 1296, 1920 x 1080, 1280 x 960, 1280 x 720 • Sub stream 1 : 704 x 576, 640 x 480, 352 x 288 • Sub stream 2 : 1920 x 1080, 1280 x 720, 704 x 576, 640 x 480 |
| Scanning system: | Progressive |
| Lens: | 3.6 mm |
| View angle: | • 89 ° (manufacturer data) • 85 ° (our tests result) |
| Range of IR illumination: | 50 m |
| RS-485 interface: | — |
| Memory card slot: | Micro SD memory cards up to 256GB support (possible local recording) |
| Image compression method: | H.265+ / H.265 / H.264+ / H.264 / MJPEG |
| Alarm inputs / outputs: | 1 / 1 |

| | |
|--------------------------------|--|
| Audio: | <ul style="list-style-type: none"> • External microphone input • Audio output • Bi-directional audio streaming support • Audio detection |
| Bitrate: | 32 kb/s ... 8192 kb/s - H.264 19 kb/s ... 8192 kb/s - H.265 |
| Main stream frame rate: | 25 fps @ 4 Mpx |
| Network interface: | 10/100 Base-T (RJ-45) |
| Network protocols: | HTTP, HTTPS, TCP, ARP, RTSP, RTP, RTCP, UDP, SMTP, FTP, DHCP, DNS, DDNS, PPPoE, IPv4/IPv6, SNMP, QoS, UPnP, NTP, ICMP, IGMP, IEEE 802.1x, Multicast |
| WEB Server: | Built-in |
| Max. number of on-line users: | 20 |
| ONVIF: | 16.12 |
| Main features: | <ul style="list-style-type: none"> • WDR - 140 dB - Wide Dynamic Range • 3D-DNR - Digital Noise Reduction • ROI - improve the quality of selected parts of image • F-DNR (Defog) - Reduction of image noise caused by precipitation • BLC/HLC - Back Light / High Light Compensation • Possibility to change the resolution, quality and bit rate • Motion Detection • Configurable Privacy Zones • ICR - Movable InfraRed filter • Mirror - Mirror image • Heat map - the selection in the image by corresponding colors the areas with different traffic • IVS analysis : crossing the line (tripwire), scene changing, intrusion - classification of people and vehicles, abandoned/missing object, face detection, people counting - detection and maintenance of 4 independent areas, detection of people gathering |
| Power supply: | <ul style="list-style-type: none"> • PoE (802.3af), • ePoE, • 12 V DC / 800 mA |
| Power consumption: | ≤ 9.5 W |
| Mobile phones support: | Port no.: 37777 or access by a cloud (P2P) <ul style="list-style-type: none"> • Android: Free application gDMSS Plus • iOS (iPhone): Free application iDMSS Plus |
| Default IP address: | 192.168.1.108 |
| Default admin user / password: | admin / - The administrator password should be set at the first start |
| Web browser access ports: | 80, 37777 |
| PC client access ports: | 37777 |
| Mobile client access ports: | 37777 |
| Port ONVIF: | 80 |
| RTSP URL: | rtsp://admin:admin@192.168.1.108:554/cam/realmonitor?channel=1&subtype=0 - Main stream rtsp://admin:admin@192.168.1.108:554/cam/realmonitor?channel=1&subtype=1 - Sub stream |
| Housing: | Compact - Metal |
| Color: | White |
| "Index of Protection": | IP67 |
| Vandal-proof: | — |
| Operation temp: | -30 °C ... 60 °C |
| Weight: | 0.97 kg |
| Dimensions: | 244 x 79 x 76 mm |



| | |
|-----------------------|--|
| Supported languages: | Polish, English, Czech, French, Spanish, Dutch, German, Portuguese, Russian, Italian |
| Manufacturer / Brand: | DAHUA |
| Guarantee: | 3 years |

PRESENTATION



Side view:



Memory card slot:



Camera mounting side view:



Camera connectors:



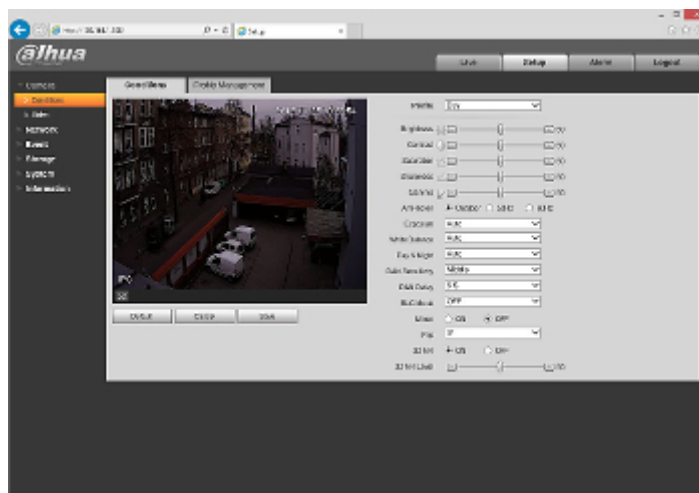
Connectors description:



In the kit:



Example captures of device interface:



OUR TESTS

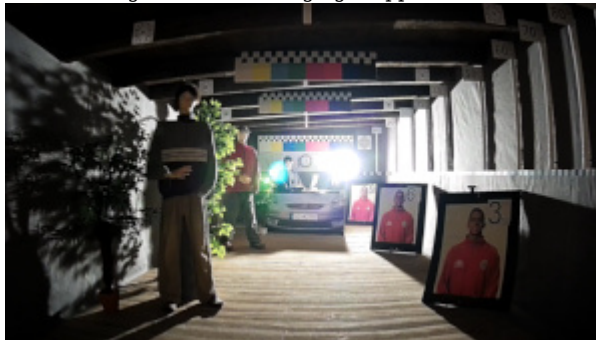
Camera image at artificial illumination (about 30Lux):



Camera image at night conditions with internal built-in IR illuminator on:



Camera image at direct strong light opposite to camera:



OUR OPINIONS



- The camera has extensive functions of intelligent image analysis.
- The "Starlight" series cameras provide a clear color image even at very poor lighting.