

Code: APTI-301C2-28WP

## IP CAMERA **APTI-301C2-28WP** - 3 Mpx 2.8 mm

Net: **176.00 PLN** Gross: **216.48 PLN**

IP camera with efficient H.264 / H.265 image compression algorithm for clear and smooth video streaming at maximal resolution of 3.0 MPx.

Camera bracket allows to adjust the camera to any direction, and power cables are hidden inside the bracket. The range of IR illumination according to the manufacturer data, depends on outer conditions (visibility - air transparency, environment, wall colors ie. scene reflectance).

PoE powering possibility, compatible with the 802.3af standard makes the device more universal and easier to install.

Camera is according to IP66 Index of Protection norm.



### SPECIFICATION

Standard:	TCP/IP
Sensor:	1/2.7 " CMOS
Matrix size:	3 Mpx
Resolution:	2304 x 1296 - 3 Mpx , 1920 x 1080 - 1080p , 1280 x 720 - 720p
Lens:	2.8 mm, 3 Mpx
View angle:	<ul style="list-style-type: none"><li>• 95 ° (manufacturer data)</li><li>• 102 ° (our tests result)</li></ul>
S/N ratio:	≥ 52 dB
Range of IR illumination:	25 m
IR illuminator power adjustment:	Automatic
Image compression method:	H.265+ / H.265 / H.264+ / H.264 / MJPEG
Bitrate:	64 ... 12000 kbps
Main stream frame rate:	20 fps @ 3 Mpx
Network interface:	10/100 Base-T (RJ-45)
Alarm inputs / outputs:	—
Audio:	—
Network protocols:	TCP/IP, ICMP, HTTP, HTTPS, FTP, DHCP, DNS, DDNS, RTP, RTSP, RTCP, NTP, SMTP
WEB Server:	Built-in - port 80
Max. number of on-line users:	10

DELTA-OPTI Monika Matysiak; <https://www.delta.poznan.pl>  
POL; 60-713 Poznań; Graniczna 10  
e-mail: [delta-opti@delta.poznan.pl](mailto:delta-opti@delta.poznan.pl); tel: +(48) 61 864 69 60

ONVIF:	2.4
RS-485 interface:	—
Mobile phones support:	Port no.: 80 or access by a cloud (P2P) <ul style="list-style-type: none"> <li>• Android: Free application <a href="#">BitVision</a></li> <li>• iOS (iPhone): Free application <a href="#">BitVision</a></li> </ul>
Default admin user / password:	admin / admin
Default IP address:	192.168.1.168
Web browser access ports:	80
PC client access ports:	80
Mobile client access ports:	80
Port ONVIF:	80
RTSP URL:	rtsp://user:password@ip_address:80/0 - Main stream rtsp://user:password@ip_address:80/1 - Sub stream
Main features:	<ul style="list-style-type: none"> <li>• D-WDR - Wide Dynamic Range</li> <li>• 3D-DNR - Digital Noise Reduction</li> <li>• F-DNR (Defog) - Reduction of image noise caused by precipitation</li> <li>• ROI - improve the quality of selected parts of image</li> <li>• ICR - Movable InfraRed filter</li> <li>• Flicker Control - The technology eliminates the tiring eyes flickering image effect</li> <li>• Possibility to change the resolution, quality and bit rate</li> <li>• BLC - Back Light Compensation</li> <li>• Motion Detection</li> <li>• Privacy zones</li> <li>• Day/night mode</li> <li>• Auto White Balance</li> <li>• Mirror - Mirror image</li> <li>• Sharpness - sharper image outlines</li> </ul>
Power supply:	<ul style="list-style-type: none"> <li>• PoE (802.3af),</li> <li>• 12 V DC / 440 mA</li> </ul>
Power consumption:	≤ 5.3 W
Housing:	Compact, Aluminum
Color:	White
"Index of Protection":	IP66
Operation temp:	-20 °C ... 60 °C
Weight:	0.31 kg
Dimensions:	Ø 73 x 155 mm
Supported languages:	Polish, English, Bulgarian, Czech, French, Spanish, Dutch, German, Portuguese, Russian, Turkish, Italian
Manufacturer / Brand:	APTI
Guarantee:	2 years

## PRESENTATION



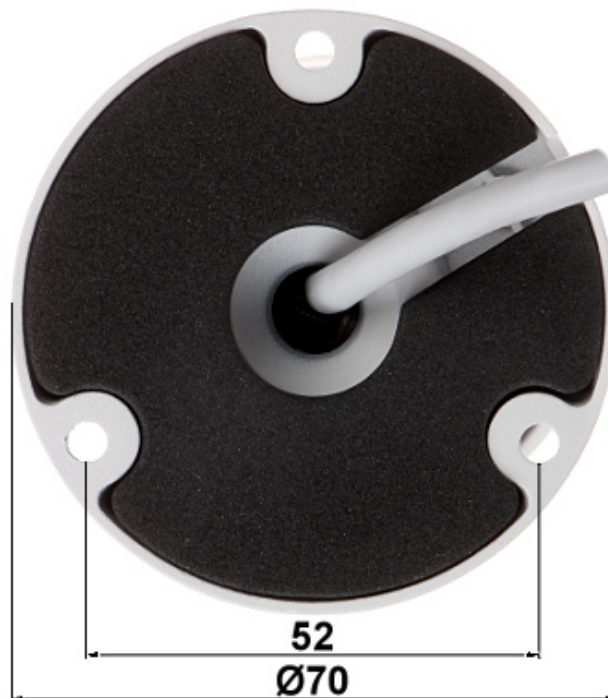
DELTA-OPTI Monika Matysiak; <https://www.delta.poznan.pl>  
POL; 60-713 Poznań; Graniczna 10  
e-mail: [delta-opti@delta.poznan.pl](mailto:delta-opti@delta.poznan.pl); tel: +(48) 61 864 69 60



Side view:



Bracket dimensions:



In the kit:



## OUR TESTS

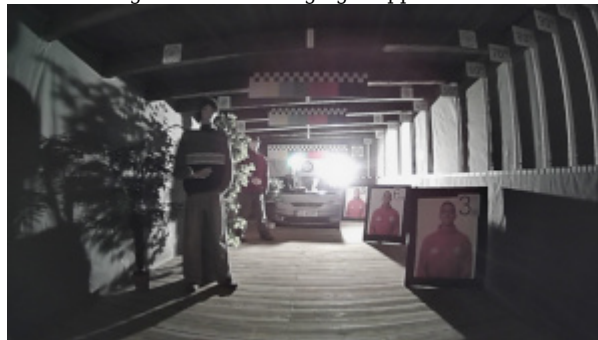
Camera image at artificial illumination (about 30Lux):



Camera image at night conditions with internal built-in IR illuminator on:



Camera image at direct strong light opposite to camera:



## OUR OPINIONS



- Small dimensions of the camera.