

# IP VANDALPROOF CAMERA **IPC-HFW5241E-Z12E-5364** - 1080p 5.3 ... 64 mm - **MOTOZOOM** DAHUA

Net: **1 903.00 PLN** Gross: **2 340.69 PLN**

IP camera with efficient H.264 / H.265 image compression algorithm for clear and smooth video streaming at maximal resolution of 1920 x 1080 (1080p). Due to above it is perfect solution for surveillance systems requiring persons or vehicles recognition. The used motozoom lens with 5.3 ... 64 mm focal length allows to remote view angle adjustment.

PoE powering possibility, compatible with the 802.3af standard makes the device more universal and easier to install.

The device is equipped with ePoE technology which enables transmission up to 800 m at a speed of 10 Mb/s or 300 m at a speed of 100 Mb/s via cat. 5e twisted-pair.

The camera has extensive functions of intelligent image analysis.



## SPECIFICATION

Standard:	TCP/IP
Sensor:	1/2.8 " STARVIS™ CMOS
Matrix size:	2.1 Mpx
Resolution:	1920 x 1080 - 1080p 1280 x 960 - 1.3 Mpx 1280 x 720 - 720p
Lens:	5.3 ... 64 mm - <b>Motozoom</b>
View angle:	<ul style="list-style-type: none"> <li>• 58 ° ... 4.0 ° (manufacturer data)</li> <li>• 57 ° ... 4.8 ° (our tests result)</li> </ul>
Compression:	H.265+ / H.265 / H.264+ / H.264 / MJPEG
Range of IR illumination:	150 m
Alarm inputs / outputs:	2 / 1
Bitrate:	32 ... 8192 kbps - H.264 19 ... 7424 kbps - H.265
Main stream frame rate:	25 fps @ 1080p
Audio:	<ul style="list-style-type: none"> <li>• External microphone input</li> <li>• Audio output</li> <li>• Bi-directional audio streaming support</li> <li>• Audio detection</li> </ul>
Memory card slot:	Micro SD memory cards up to 256GB support (possible local recording)
Network interface:	10/100 Base-T (RJ-45)
Network protocols:	HTTP, HTTPS, TCP, ARP, RTSP, RTP, UDP, RTCP, SMTP, FTP, DHCP, DNS, DDNS, PPPoE, IPv4/IPv6, SNMP, QoS, UPnP, NTP, ICMP, IGMP, IEEE 802.1x, Multicast

Mobile phones support:	Port no.: 37777 or access by a cloud (P2P) <ul style="list-style-type: none"> <li>• Android: Free application <a href="#">gDMSS Plus</a></li> <li>• iOS (iPhone): Free application <a href="#">iDMSS Plus</a></li> </ul>
Default admin user / password:	admin / - The administrator password should be set at the first start
Default IP address:	192.168.1.108
Web browser access ports:	80, 37777
PC client access ports:	37777
WEB Server:	Built-in, NVR compliance
Mobile client access ports:	37777
Max. number of on-line users:	20
ONVIF:	16.12
Port ONVIF:	80
RTSP URL:	rtsp://admin:haslo@192.168.1.108:554/cam/realmonitor?channel=1&subtype=0 - Main stream rtsp://admin:haslo@192.168.1.108:554/cam/realmonitor?channel=1&subtype=1 - Sub stream
RS-485 interface:	—
Main features:	<ul style="list-style-type: none"> <li>• Motozoom lens</li> <li>• WDR - 120 dB - Wide Dynamic Range</li> <li>• EIS - Electronic Image Stabilization</li> <li>• 3D-DNR - Digital Noise Reduction</li> <li>• ROI - improve the quality of selected parts of image</li> <li>• F-DNR (Defog) - Reduction of image noise caused by precipitation</li> <li>• BLC/HLC - Back Light / High Light Compensation</li> <li>• Possibility to change the resolution, quality and bit rate</li> <li>• Motion Detection</li> <li>• Configurable Privacy Zones</li> <li>• ICR - Movable InfraRed filter</li> <li>• Mirror - Mirror image</li> <li>• Heat map - the selection in the image by corresponding colors the areas with different traffic</li> <li>• IVS analysis : crossing the line (tripwire), scene changing, intrusion - classification of people and vehicles, abandoned/missing object, people counting - detection and maintenance of 4 independent areas, detection of people gathering, face detection - supports 6 types of facial attributes extraction</li> </ul>
Operation temp:	-30 °C ... 60 °C
Power supply:	<ul style="list-style-type: none"> <li>• PoE (802.3af),</li> <li>• ePoE,</li> <li>• 12 V DC / 860 mA</li> </ul>
Power consumption:	≤ 10.3 W
Housing:	Compact, Metal + Plastic
"Index of Protection":	IP67
Vandal-proof:	IK10
Color:	White + Black
Supported languages:	Polish, English, Czech, French, Spanish, Dutch, German, Portuguese, Russian, Italian
Manufacturer / Brand:	DAHUA
Weight:	1.14 kg
Dimensions:	273 x 95 x 95 mm
Guarantee:	<b>3 years</b>

## PRESENTATION



DELTA-OPTI Monika Matysiak; <https://www.delta.poznan.pl>  
POL; 60-713 Poznań; Graniczna 10  
e-mail: [delta-opti@delta.poznan.pl](mailto:delta-opti@delta.poznan.pl); tel: +(48) 61 864 69 60



Side view:



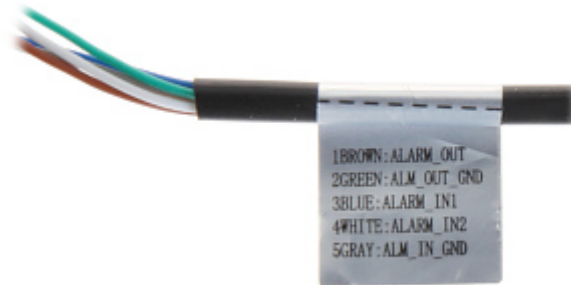
Bottom view:



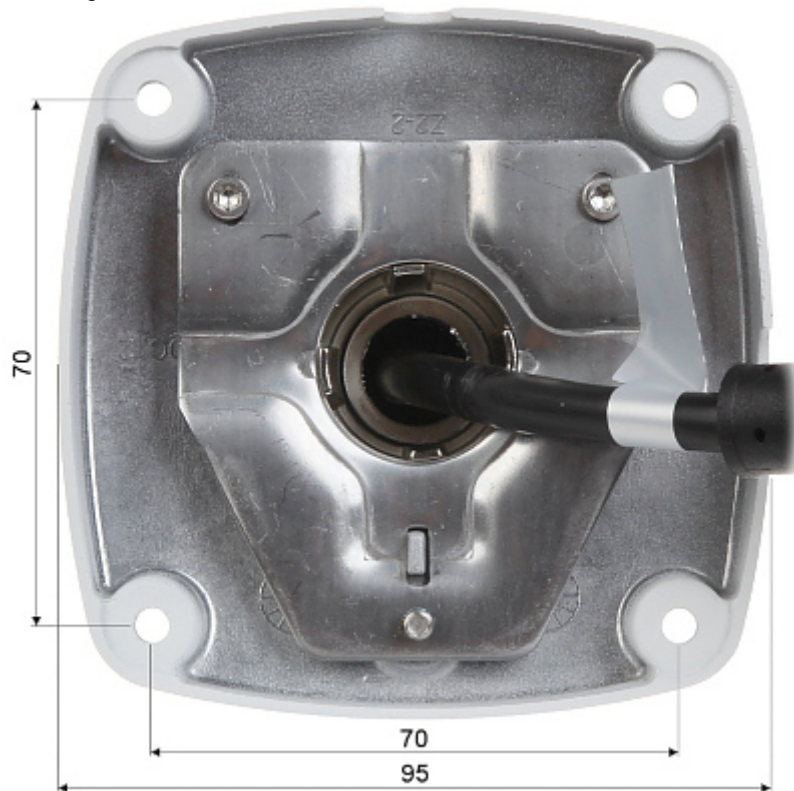
Camera connectors:



Connectors description:



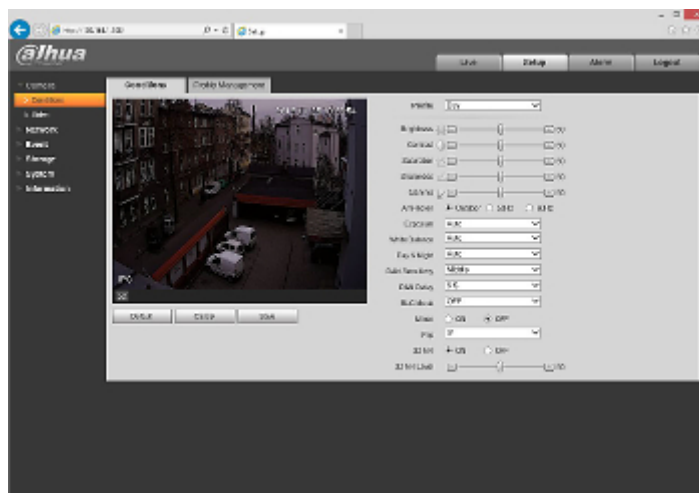
Mounting side view:



In the kit:



Example captures of device interface:



## OUR TESTS

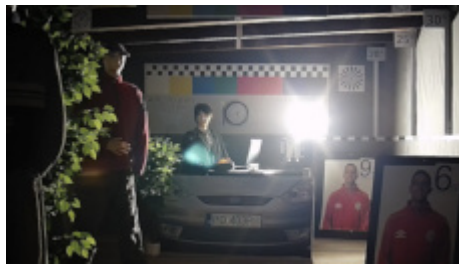
Camera image at artificial illumination (about 30Lux):



Camera image at night conditions with internal built-in IR illuminator on:



Camera image at direct strong light opposite to camera:



## OUR OPINIONS



- The "Starlight" series cameras provide a clear color image even at very poor lighting.
- The camera has extensive functions of intelligent image analysis.