

Code: IPC-B2B40-ZS-2812

IP CAMERA **IPC-B2B40-ZS-2812** EZ-IP - 3.7 Mpx 2.8 ... 12 mm - **MOTOZOOM DAHUA**

Net: **787.00 PLN** Gross: **968.01 PLN**

IP camera with efficient H.265 / H.264 image compression algorithm for clear and smooth video streaming at maximal resolution of 2560 x 1440 (3.7 MPx). Due to above it is perfect solution for surveillance systems requiring persons or vehicles recognition.

The used motozoom lens with 2.8 ... 12 mm focal length allows to remote view angle adjustment.

PoE powering possibility, compatible with the 802.3af standard makes the device more universal and easier to install. Camera is according to IP67 Index of Protection norm.



The devices from the EZ-IP series are ideal for small and medium applications, such as security for homes, apartments and small shops.



SPECIFICATION

Standard:	TCP/IP
Sensor:	1/3 " Progressive Scan CMOS
Matrix size:	3.7 Mpx
Resolution:	2560 x 1440 - 3.7 Mpx , 2304 x 1296 - 3.0 Mpx , 1920 x 1080 - 1080p , 1280 x 960 - 1.3 Mpx , 1280 x 720 - 720p
Lens:	2.8 ... 12 mm - Motozoom
View angle:	<ul style="list-style-type: none">• 97 ° ... 31 ° (manufacturer data)• 90 ° ... 30 ° (our tests result)
Compression:	H.265+ / H.265 / H.264+ / H.264 / MJPEG
S/N ratio:	> 50 dB
Range of IR illumination:	40 m
Alarm inputs / outputs:	<input checked="" type="checkbox"/>
Bitrate:	32 ... 6144 kbps - H.264 12 ... 6144 kbps - H.265
Main stream frame rate:	20 fps - 4 Mpx 25 fps - 1080p
Network interface:	10/100 Base-T (RJ-45)
Network protocols:	HTTP, HTTPS, TCP, ARP, RTSP, RTP, RTCP, UDP, SMTP, FTP, DHCP, DNS, DDNS, IPv4/IPv6, QoS, UPnP, NTP, Bonjour, Multicast, ICMP, IGMP, TLS, SSH

DELTA-OPTI Monika Matysiak; <https://www.delta.poznan.pl>
POL; 60-713 Poznań; Graniczna 10
e-mail: delta-opti@delta.poznan.pl; tel: +(48) 61 864 69 60

Audio:	
WEB Server:	Built-in, NVR compliance
Memory card slot:	Micro SD memory cards up to 128GB support (possible local recording)
Max. number of on-line users:	20
ONVIF:	16.12
Mobile phones support:	Port no.: 37777 or access by a cloud (P2P) <ul style="list-style-type: none"> • Android: Darmowa aplikacja gDMSS Plus • iOS (iPhone): Darmowa aplikacja iDMSS Plus
Default admin user / password:	admin / - The administrator password should be set at the first start
Default IP address:	192.168.1.108
Web browser access ports:	80, 37777
PC client access ports:	37777
Mobile client access ports:	37777
Port ONVIF:	80
RTSP URL:	rtsp://admin:hasło@192.168.1.108:554/cam/realmonitor?channel=1&subtype=0 - Main stream rtsp://admin:hasło@192.168.1.108:554/cam/realmonitor?channel=1&subtype=1 - Sub stream
RS-485 interface:	
Main features:	<ul style="list-style-type: none"> • Motozoom lens • D-WDR - Wide Dynamic Range • 3D-DNR - Digital Noise Reduction • ROI - improve the quality of selected parts of image • Motion Detection - max. 4 zones • Privacy zones - max. 4 • BLC - Back Light Compensation • HLC - High Light Compensation (spot) • Mirror - Mirror image • ICR - Movable InfraRed filter • AGC - Automatic Gain Control • Auto White Balance
Power supply:	<ul style="list-style-type: none"> • PoE (802.3af), • 12 V DC / 440 mA
Power consumption:	≤ 5.3 W
Operation temp:	-30 °C ... 60 °C
Housing:	Compact, Metal
Color:	White
"Index of Protection":	IP67
Supported languages:	Polish, English
Weight:	0.45 kg
Dimensions:	244 x 90 x 90 mm
Manufacturer / Brand:	DAHUA
Guarantee:	3 years

PRESENTATION

Front view:



Bottom view (after remove the cover):



Side view:



Mounting side view:



In the kit:



OUR TESTS

Camera image at artificial illumination (about 30Lux):



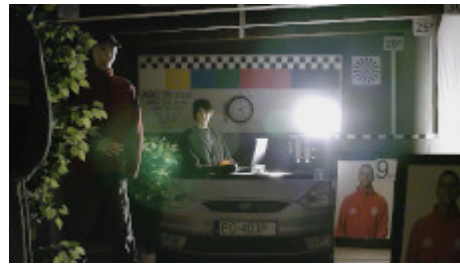
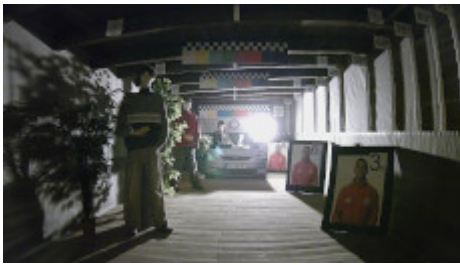
Camera image at night conditions with internal built-in IR illuminator on:



DELTA-OPTI Monika Matysiak; <https://www.delta.poznan.pl>
POL; 60-713 Poznań; Graniczna 10
e-mail: delta-opti@delta.poznan.pl; tel: +(48) 61 864 69 60



Camera image at direct strong light opposite to camera:



OUR OPINIONS



- Motozoom lens.