

Code: LE-401757

FLUSH-MOUNTING DISTRIBUTION CABINET 36-MODULAR **LE-401757**

Practibox³ LEGRAND

Net: **255.88 PLN** Gross: **314.73 PLN**



2-row 36-modular flush-mounting distribution electric cabinet.

SPECIFICATION

Method of mounting:	Flush
Number of mounted modules:	18 x 2 rows, 17.5 mm
Spacing between TH 35 rails:	150 mm
Transparent door:	<input type="checkbox"/>
Main features:	<ul style="list-style-type: none">• Removable chassis with TH 35 rails• Reversible door• Removable faceplates for each row of cabinet• Rated voltage : 400 V AC, 50 / 60 Hz• Max. current : 90 A• Short-circuit current : 10 kA• Equipped with terminal blocks
Equipment:	<ul style="list-style-type: none">• Terminal blocks 1 x (1 x 25 mm ² + 16 x 16 mm ²) 2 x (8 x 16 mm ²)
Material:	Self-extinguishing
Color:	White
"Index of Protection":	IP40
IK rating:	IK07
Safety class:	Grade 2
Complies with norms:	IEC/EN 60670-24, IEC/EN 62208, IEC/EN 61439-3
Operation temp:	-10 °C ... 60 °C

DELTA-OPTI Monika Matysiak; <https://www.delta.poznan.pl>
POL; 60-713 Poznań; Graniczna 10
e-mail: delta-opti@delta.poznan.pl; tel: +(48) 61 864 69 60

Weight:	3.084 kg
Dimensions:	493 x 496 x 105 mm , 436 x 456 x 85 mm - flush-mounting box
Manufacturer / Brand:	LEGRAND
Guarantee:	2 years

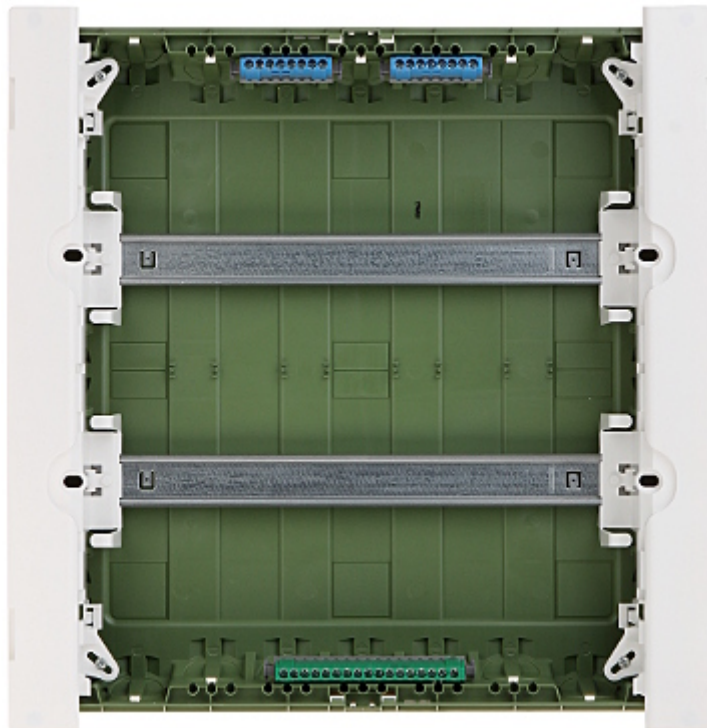
PRESENTATION

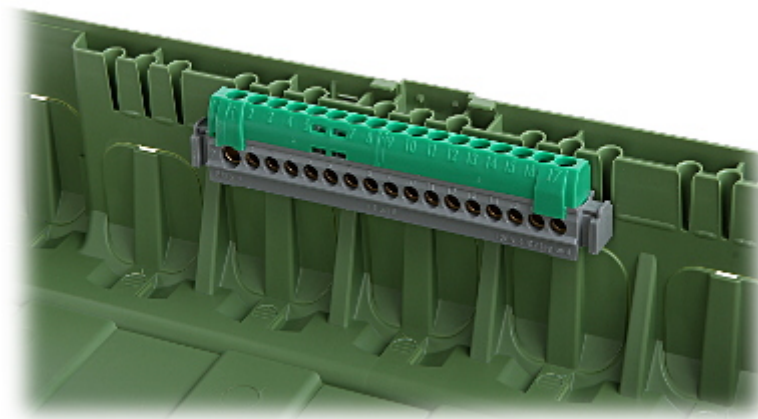
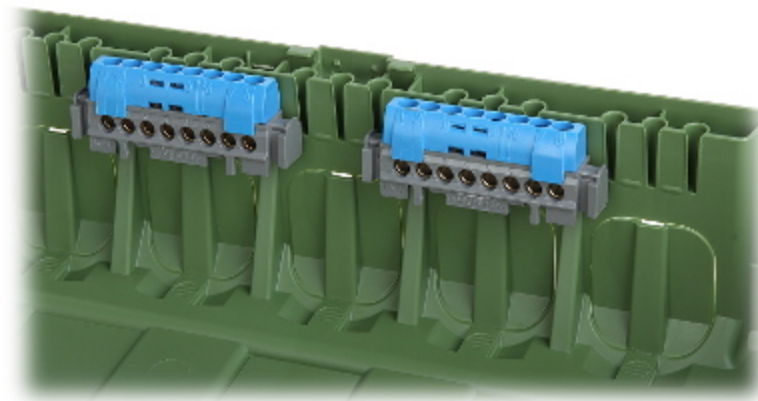
Front view:





Internal view of the housing:

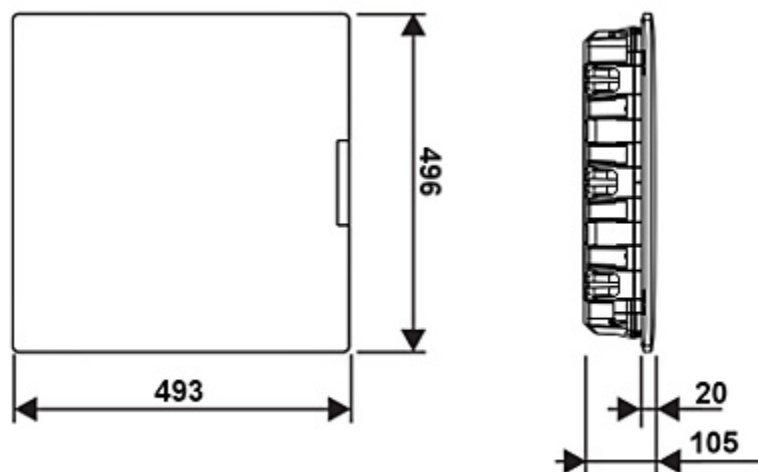




Mounting side view:



Dimensions:



In the kit:

