

Code: LE-135363

FLUSH-MOUNTING DISTRIBUTION CABINET 36-MODULAR **LE-135363**

Practibox S LEGRAND

Net: **35.29 EUR** Gross: **43.41 EUR**



3-row 36-modular flush-mounting distribution electric cabinet.

SPECIFICATION

Method of mounting:	Flush
Number of mounted modules:	12 x 3 rows, 17.5 mm
Spacing between TH 35 rails:	150 mm
Transparent door:	—
Main features:	<ul style="list-style-type: none">• Removable chassis with TH 35 rails• Reversible door• Equipped with terminal blocks
Equipment:	<ul style="list-style-type: none">• Terminal blocks 1 pcs : 14 x 16 mm ² + 14 x 10 mm ² , 2 pcs : 5 x 16 mm ² + 5 x 10 mm ²
Material:	Self-extinguishing
Color:	White
"Index of Protection":	IP40
IK rating:	IK07
Complies with norms:	IEC/EN 60670-24, IEC/EN 62208, IEC/EN 61439-3
Operation temp:	-10 °C ... 60 °C
Weight:	1.91 kg
Dimensions:	535 x 328 x 105 mm , 520 x 306 x 72 mm - flush-mounting box

DELTA-OPTI Monika Matysiak; <https://www.delta.poznan.pl>
POL; 60-713 Poznań; Graniczna 10
e-mail: delta-opti@delta.poznan.pl; tel: +(48) 61 864 69 60

Manufacturer / Brand:	LEGRAND
Guarantee:	2 years

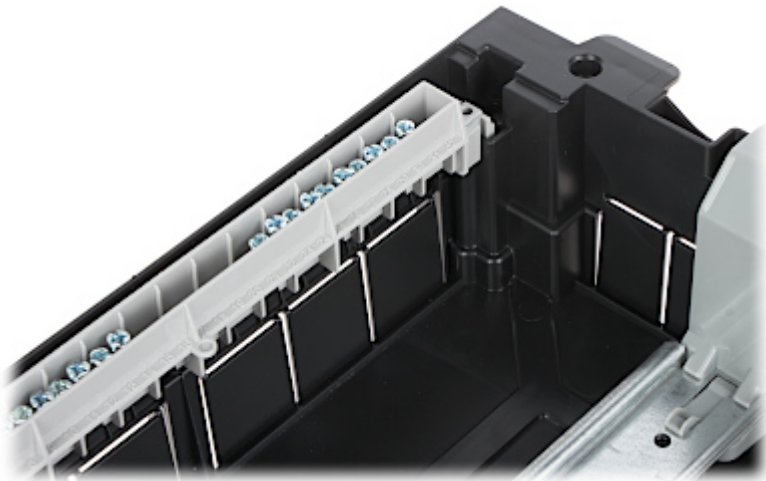
PRESENTATION

Front view:





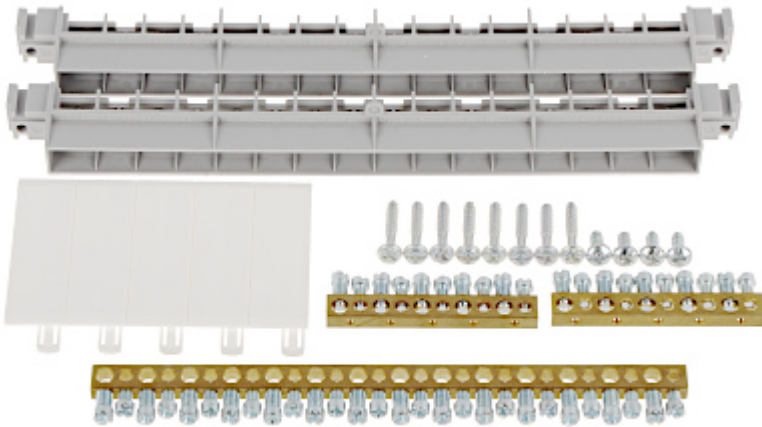
Internal view of the housing:



Mounting side view:



In the kit:



PACKAGE

Dimensions (L x W x H): 0x0x0 mm	Gross Weight: 0 kg
----------------------------------	--------------------



DELTA-OPTI Monika Matysiak; <https://www.delta.poznan.pl>
POL; 60-713 Poznań; Graniczna 10
e-mail: delta-opti@delta.poznan.pl; tel: +(48) 61 864 69 60