

Code: LE-137377

# FLUSH-MOUNTING DISTRIBUTION CABINET 36-MODULAR LE-137377

## Practibox S LEGRAND

Net: 34.79 EUR Gross: 42.79 EUR



2-row 36-modular flush-mounting distribution electric cabinet.

### SPECIFICATION

Method of mounting:	Flush
Number of mounted modules:	18 x 2 rows, 17.5 mm
Spacing between TH 35 rails:	150 mm
Transparent door:	✓
Main features:	<ul style="list-style-type: none"><li>• Removable chassis with TH 35 rails</li><li>• Reversible door</li><li>• Removable faceplates for each row of cabinet</li><li>• Rated voltage : 400 V AC, 50 / 60 Hz</li><li>• Max. current : 125 A</li><li>• Short-circuit current : 10 kA</li><li>• Equipped with terminal blocks</li></ul>
Equipment:	Terminal blocks : <ul style="list-style-type: none"><li>• 2 pcs : 1 x 25 mm<sup>2</sup> + 12 x 16 mm<sup>2</sup></li><li>• 1 pcs 1 x 25 mm<sup>2</sup> + 26 x 16 mm<sup>2</sup></li></ul>
Material:	Self-extinguishing
Color:	White
"Index of Protection":	IP40
IK rating:	IK07
Complies with norms:	IEC/EN 60670-24, IEC/EN 61439-3
Operation temp:	-10 °C ... 60 °C
Weight:	1.88 kg

DELTA-OPTI Monika Matysiak; <https://www.delta.poznan.pl>  
POL; 60-713 Poznań; Graniczna 10  
e-mail: delta-opti@delta.poznan.pl; tel: +(48) 61 864 69 60

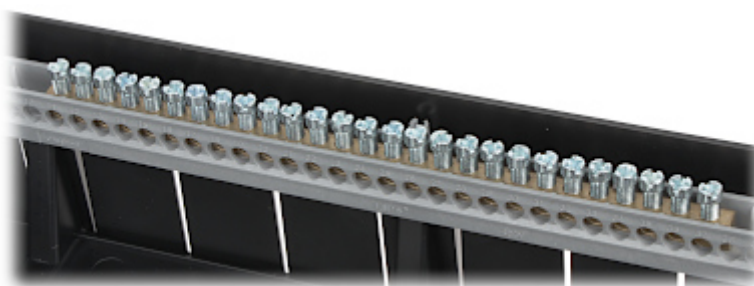
Dimensions:	436 x 385 x 105 mm , 420 x 370 x 85 mm - flush-mounting box
Manufacturer / Brand:	LEGRAND
Guarantee:	2 years

## PRESENTATION

Front view:



Internal view of the housing:



Mounting side view:



In the kit:

