

Code: LE-137378

FLUSH-MOUNTING DISTRIBUTION CABINET 54-MODULAR **LE-137378**

Practibox S LEGRAND

Net: **50.32 EUR** Gross: **61.89 EUR**



3-row 54-modular flush-mounting distribution electric cabinet.

SPECIFICATION

Method of mounting:	Flush
Number of mounted modules:	18 x 3 rows, 17.5 mm
Spacing between TH 35 rails:	150 mm
Transparent door:	✓
Main features:	<ul style="list-style-type: none">• Removable chassis with TH 35 rails• Reversible door• Removable faceplates for each row of cabinet• Rated voltage : 400 V AC, 50 / 60 Hz• Max. current : 125 A• Short-circuit current : 10 kA• Equipped with terminal blocks
Equipment:	Terminal blocks : <ul style="list-style-type: none">• 2 pcs : 1 x 25 mm² + 12 x 16 mm²• 1 pcs : 1 x 25 mm² + 34 x 16 mm²
Material:	Self-extinguishing
Color:	White
"Index of Protection":	IP40
IK rating:	IK07
Complies with norms:	IEC/EN 60670-24, IEC/EN 61439-3
Operation temp:	-10 °C ... 60 °C
Weight:	2.78 kg

DELTA-OPTI Monika Matysiak; <https://www.delta.poznan.pl>
POL; 60-713 Poznań; Graniczna 10
e-mail: delta-opti@delta.poznan.pl; tel: +(48) 61 864 69 60

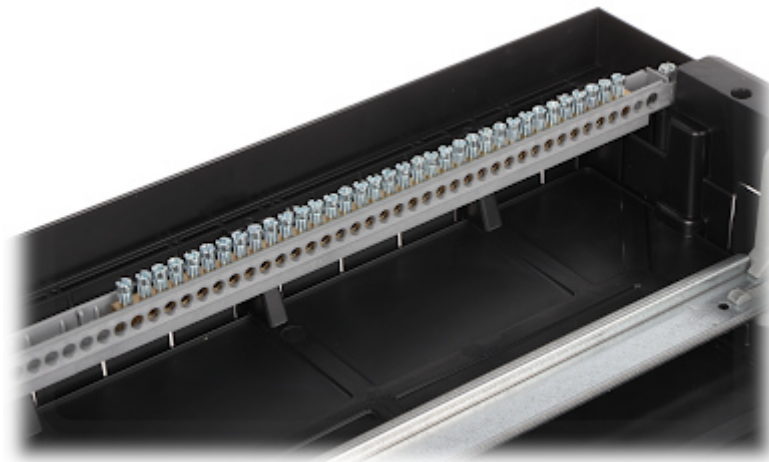
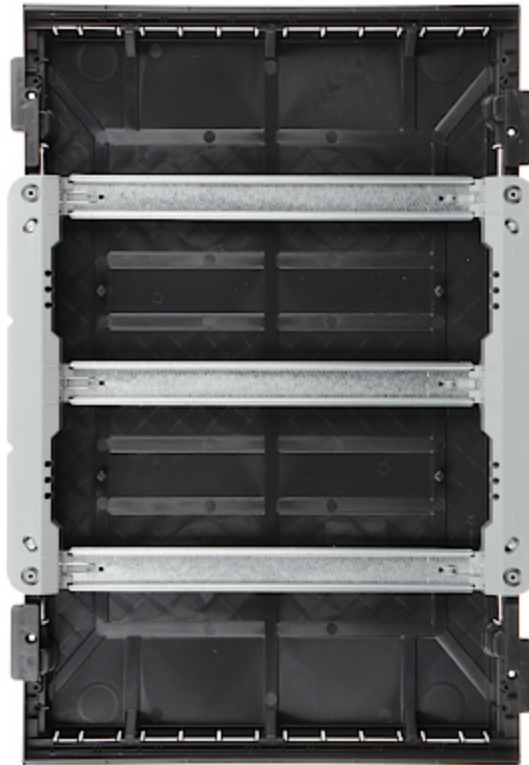
Dimensions:	430 x 615 x 105 mm , 420 x 535 x 85 mm - flush-mounting box
Manufacturer / Brand:	LEGRAND
Guarantee:	2 years

PRESENTATION

Front view:



Internal view of the housing:



Mounting side view:



In the kit:

