

Code: LE-406469

## ISOLATING SWITCH **LE-406469** THREE-PHASE 100 A LEGRAND

Net: **14.85 EUR** Gross: **18.27 EUR**

Isolating switch ensuring the isolation of entire installation from the mains. The LE-406469 device is designed to mount on DIN TS-35 rail.



### SPECIFICATION

Device type:	Isolating switch, Three-phase
Rated current:	100 A
Rated voltage:	500 V AC, 50/60 Hz
Rated short time withstand current:	2500 A
Rated impulse withstand voltage:	6 kV
Number of poles:	3
Category of use:	AC22A
Connectors type:	screw terminals
Main features:	<ul style="list-style-type: none"><li>• Can be connected with using the supply busbars fork-type or prong-type</li><li>• Provided space for a label with description</li></ul>
Housing:	Plastic, DIN, TS-35 rail mounting
Width in 17.5 mm modules:	3
Weight:	0.27 kg
Dimensions:	53 x 83 x 75 mm
Manufacturer / Brand:	LEGRAND
Guarantee:	2 years

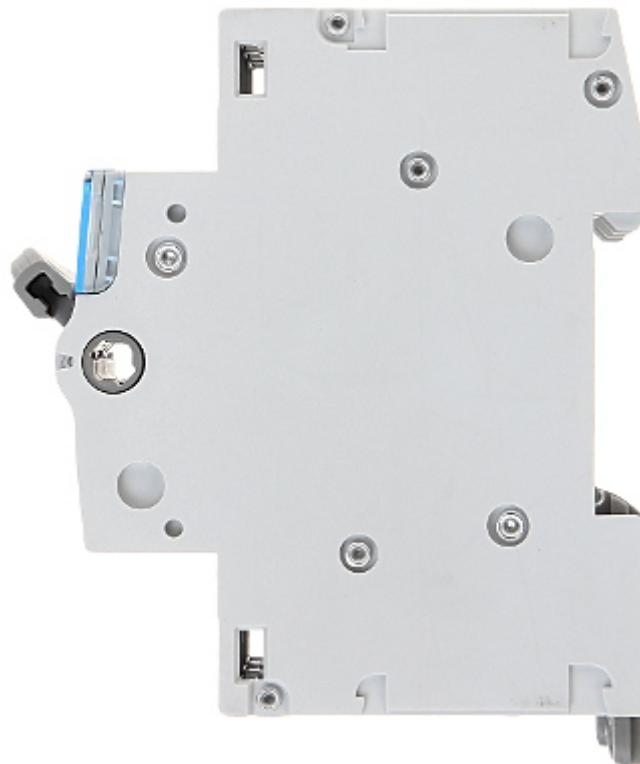
### PRESENTATION

DELTA-OPTI Monika Matysiak; <https://www.delta.poznan.pl>  
POL; 60-713 Poznań; Graniczna 10  
e-mail: [delta-opti@delta.poznan.pl](mailto:delta-opti@delta.poznan.pl); tel: +(48) 61 864 69 60

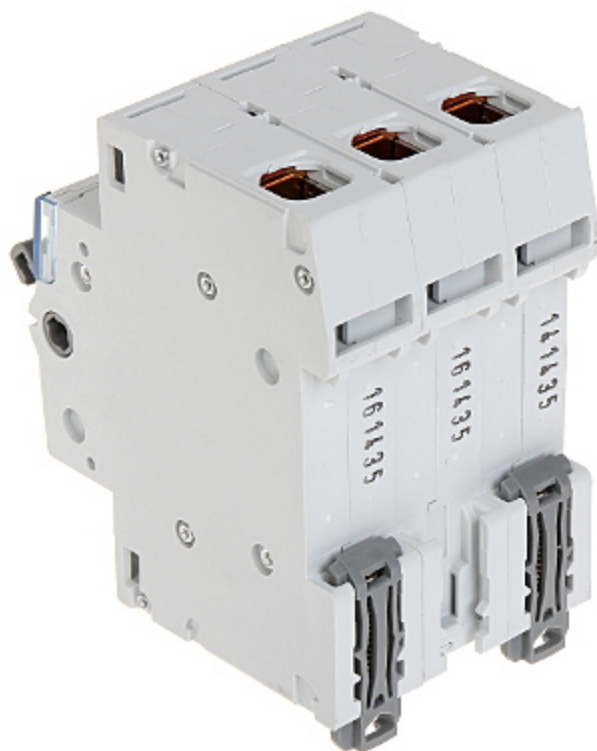
Front view:



Side view:



Mounting side view:



Bottom view:

