

Code: LE-665114

UNIVERSAL DIMMER **LE-665114** Niloe 400 W LEGRAND

Net: **62.00 EUR** Gross: **76.26 EUR**

The LE-665114 dimmer allows to fluent control of the illumination or to switch between defined values. Thanks to the multitude of operating modes and the ability to connect with additional buttons, the device will meet even the most demanding.

The dimmer is designed to operate with incandescent lamps, halogen lamps, halogen lamps with transformers, fluorescent lamps, dimmable compact fluorescent lamps and dimmable LEDs.

ATTENTION! The use of LEDs requires prior verification of the correct co-operation of the equipment.



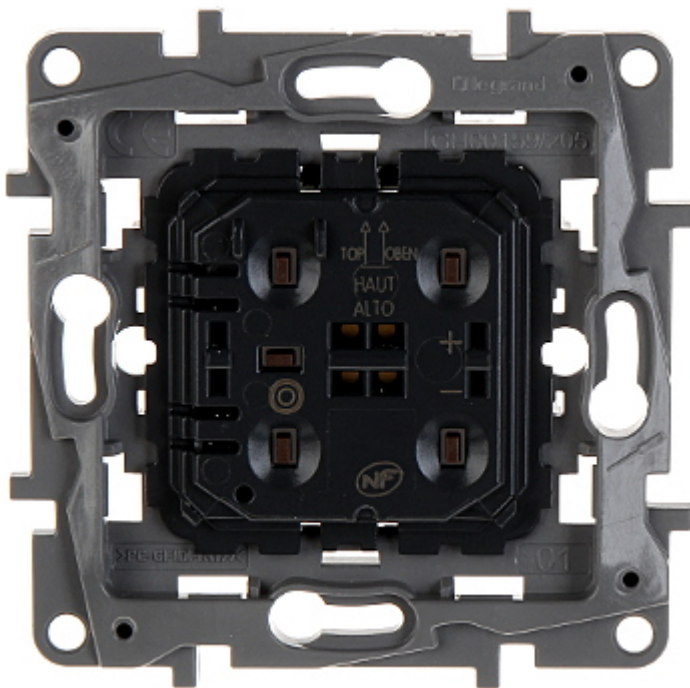
SPECIFICATION

Device type:	Universal Dimmer
Rated voltage:	230 V AC, 50/60 Hz
Nominal power:	<ul style="list-style-type: none">• 3 W ... 400 W - for incandescent and halogen lamps,• 3 VA ... 400 VA - for ELV halogen bulbs with ferromagnetic transformer or electronic transformer,• 3 VA ... 200 VA - for linear fluorescent lamps with ferromagnetic transformer or electronic transformer,• 3 W ... 150 W - for dimmable compact fluorescent lamps,• 3 W ... 75 W - for dimmable LEDs
Connectors type:	screw terminals
Application:	Niloe product series
Assembly:	Claw or screw mounting (not included)
Housing:	Plastic

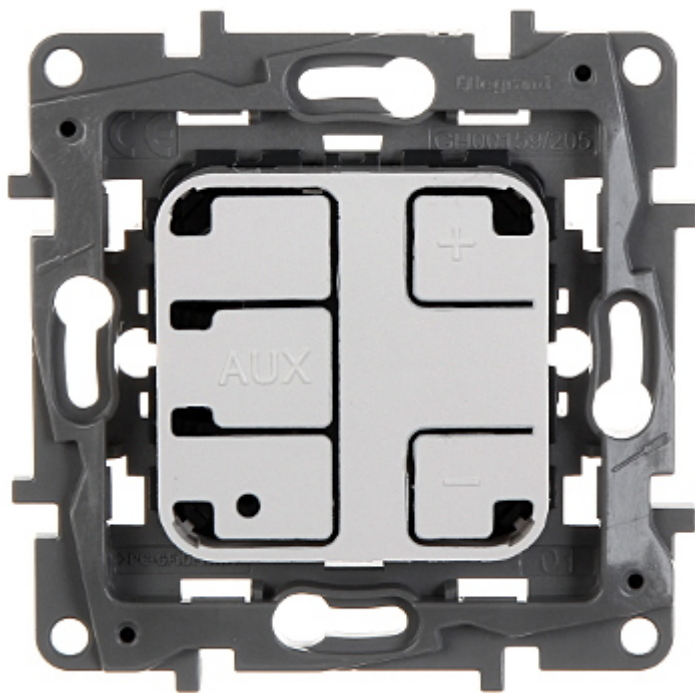
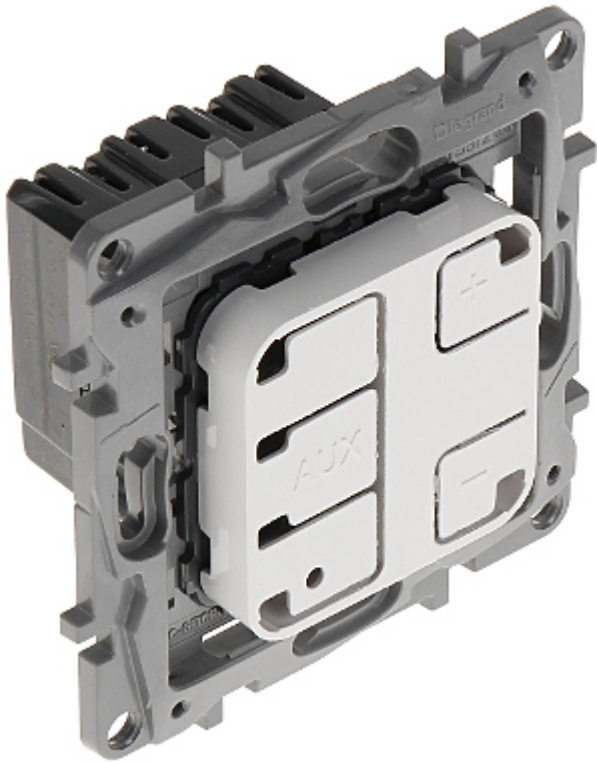
Main features:	<ul style="list-style-type: none"> • Automatic detection of the type of connected lamp • The device can successfully replace the traditional switch • The dimmer is designed to operate with incandescent lamps, halogen lamps, halogen lamps with transformers, fluorescent lamps, dimmable compact fluorescent lamps and dimmable LEDs • The device can be connected with additional buttons to create a distributed lighting control system, such as in the corridor or living room • The use of LEDs requires prior verification of the correct co-operation of the equipment • The kit includes a plastic overlay for easy configuration of the device • Operation modes : <ul style="list-style-type: none"> - Dimmer mode - the device enables fluent control of lighting intensity - Pre-set levels mode - the device allows to switch between three user-defined levels of lighting intensity without the possibility of fluent control - Pre-set levels mode with night light - the device allows to switch between two user-defined levels of lighting intensity, or a gradual dimming mode from a defined level to completely turn off in 1 hour
Color:	White
Weight:	0.086 kg
Dimensions:	76 x 76 x 46 mm
Manufacturer / Brand:	LEGRAND
Guarantee:	2 years

PRESENTATION

Front view:



The kit includes a plastic overlay for easy configuration of the device:



Rear view:

