

Code: LE-001356

INSULATING SHIELD BOX **LE-001356** FOR MODULES MOUNTED ON DIN TS-35 RAIL LEGRAND

Net: 3.94 PLN Gross: 4.85 PLN

The LE-001356 box is designed for mounting anywhere up to 2 modules designed for DIN TS-35 rail mounting. The box design provides protection against access to connectors, and the materials used show high resistance to mechanical and thermal damage. In addition, the box has dedicated places to put seals on.

The LE-001356 box allows easy access to modules such as the main power switch (in a single-phase installation), electricity meters or signaling diodes without opening the distribution cabinet.

Attention! In order to place a module larger than the standard width 17.5mm or more than one module in the box, the opening in the front panel should be widened accordingly, removing material according to designed weaknesses.



SPECIFICATION

Complies with norms:	PN-EN 60439-3
Width in 17.5 mm modules:	2
Main features:	Heat resistance : 85 °C
Color:	White - RAL9010
"Index of Protection":	IP30
Weight:	0.09 kg
Dimensions:	140 x 52 x 68 mm
Manufacturer / Brand:	LEGRAND
Guarantee:	2 years

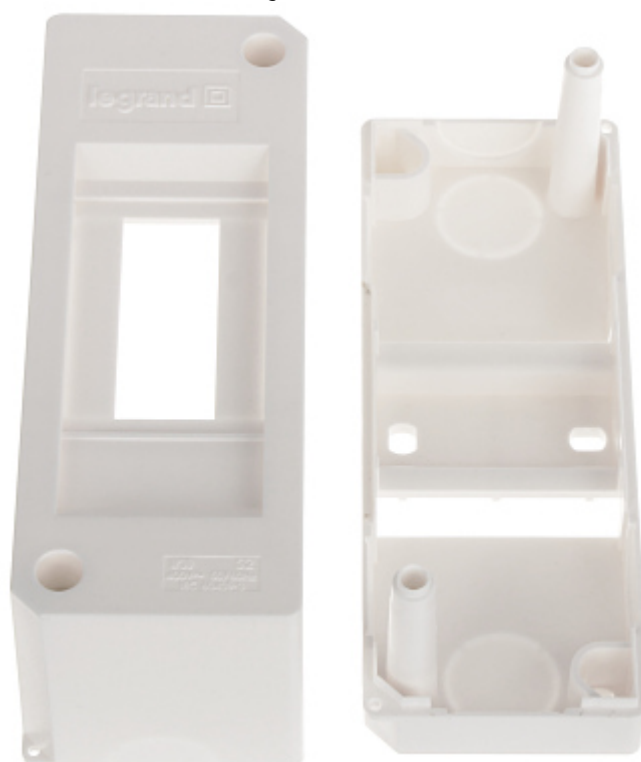
PRESENTATION

DELTA-OPTI Monika Matysiak; <https://www.delta.poznan.pl>
POL; 60-713 Poznań; Graniczna 10
e-mail: delta-opti@delta.poznan.pl; tel: +(48) 61 864 69 60

Front view:



Internal view of the housing:





Mounting side view:

