

Code: PZU-4810-D2

## CONVERTER MODULE **PZU-4810-D2** DC/DC

Net: **145.35 PLN** Gross: **178.78 PLN**



Inverter module increasing the voltage. The PZU-4810-D2 device converts the input voltage to the 8V ... 48V DC value.

### SPECIFICATION

Type:	Increasing the voltage, DC/DC
Number of inputs:	1
Number of outputs:	1
Power voltage:	8 ... 36 V DC
Output voltage:	8 ... 48 V DC
Output voltage adjustment:	Multi-turn precision potentiometer adjustment (27 rotations)
Output current:	5 A (max)
Power:	<ul style="list-style-type: none"><li>• 100 W (max)</li><li>• 48 W (continuous operation)</li></ul>
Minimal voltage difference between out and in:	0 V
Protections:	<ul style="list-style-type: none"><li>• Short-circuit - Glass Fuse</li><li>• Overheat &gt; 80 °C</li><li>• Reverse polarity connection</li></ul>
Main features:	<ul style="list-style-type: none"><li>• DIN, TS-35 rail mounting</li><li>• LED indication - Input voltage, Output voltage</li></ul>
Application:	<ul style="list-style-type: none"><li>• to cameras powering</li><li>• to cameras powering PoE</li><li>• to cameras with thermostat powering</li></ul>
Weight:	0.12 kg
Dimensions:	37 x 97 x 58 mm
Manufacturer / Brand:	DELTA
Guarantee:	<b>3 years</b>

### PRESENTATION



DELTA-OPTI Monika Matysiak; <https://www.delta.poznan.pl>  
POL; 60-713 Poznań; Graniczna 10  
e-mail: [delta-opti@delta.poznan.pl](mailto:delta-opti@delta.poznan.pl); tel: +(48) 61 864 69 60

Connectors:



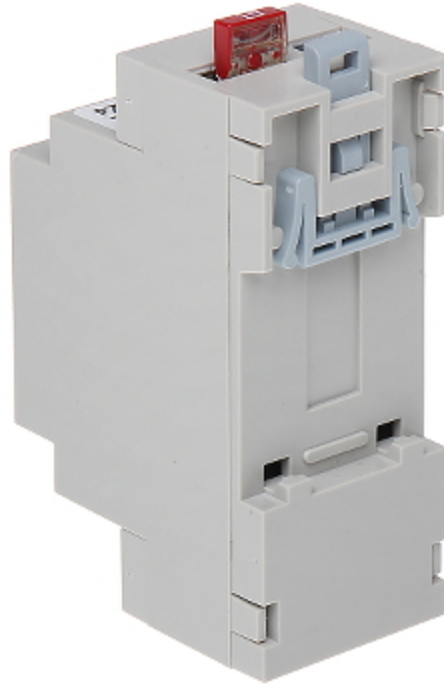
Top view:



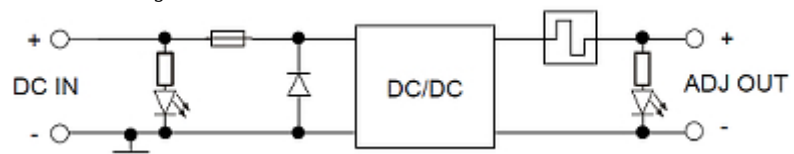
Side view:



Mounting side view:



Schematic diagram:



## OUR OPINIONS



- A good option if you want to power the PoE camera dispatching only 12V DC power voltage.

