

Code: APTI-AI71FRTD

# ACCESS CONTROLLER WITH TEMPERATURE MEASUREMENT **APTI-AI71FRTD** 4.5 mm - 1080p

Net: **106.44 EUR** Gross: **106.44 EUR**



Access controller based on face recognition with body surface temperature measurement function.

A solution dedicated to measuring temperature. The camera is able to detect increased object temperature. It can be used for preliminary temperature control in places such as customs, airports, schools and hospitals. Face recognition with extended functionality allows you to determine whether the observed person has a protective mask and in the absence of a mask perform the appropriate action, e.g. trigger a voice message reminding to cover the face.

The controller is equipped with a wall mounting bracket.

**Attention!** The face recognition feature requires that photos for the database be taken in homogeneous lighting, and the size of a single photo must not exceed 2 MB. In addition, the photo should be cropped in such a way that the image contains the entire face, while the face should occupy as much of the surface of the image as possible. When using the face recognition function for people in protective masks, the optimal working conditions of the device are ensured by positioning it so that the lens is at the height of the face and is directed towards it.

## SPECIFICATION

Sensor:	1/2.8 " SONY Starvis™ Back-illuminated CMOS
Matrix size:	2.1 Mpx
Scanning system:	Progressive
Lens:	4.5 mm
View angle:	68 °
Optical zoom:	—
Resolution:	1920 x 1080 - 1080p

### Auxiliary camera:

Sensor:	1/5 " GC2145
Matrix size:	2 Mpx
Pixel pitch:	1.75 µm
Lens:	2.4 mm
View angle:	70 °
Resolution:	800 x 600 - 0.48 Mpx

### General information:

Standard:	TCP/IP
Range of IR illumination:	5 m

DELTA-OPTI Monika Matysiak; <https://www.delta.poznan.pl>  
POL; 60-713 Poznań; Graniczna 10  
e-mail: [delta-opti@delta.poznan.pl](mailto:delta-opti@delta.poznan.pl); tel: +(48) 61 864 69 60

White light LED illuminator range:	5 m
Temperature measurement:	✓
Temperature measurement range:	35 °C ... 42 °C
Accuracy of temperature measurement:	± 0.3 °C
Face recognition distance:	0.5 m ... 2.3 m (max 30 000 faces in the database)
Temperature measurement distance:	0.5 m ... 1.3 m optimal distance : 0.75 m
Internal memory:	Support storage of 25 000 records
Video output:	—
RS-485 interface:	✓
Wiegand interface:	✓
Memory card slot:	—
Alarm inputs / outputs:	0 / 2 ( bolt control, signaling of exceeding the temperature )
Relay output:	NO, NC
Audio:	Speaker built-in
Network interface:	10/100 Base-T (RJ-45)
Network protocols:	IPv4, HTTP, HTTPS, TCP/IP
WEB Server:	Built-in
Max. number of on-line users:	20
ONVIF:	—
RS-485:	✓
Default IP address:	DHCP / 192.168.1.88
Default admin user / password:	admin / 12345
Web browser access ports:	7080
PC client access ports:	7080
Main features:	<ul style="list-style-type: none"> <li>• Built-in LCD display showing the image from the video camera and the result of temperature measurement - 1024 x 600 px</li> <li>• Day/Night mode (color/b&amp;w/auto)</li> <li>• RESET button</li> <li>• Wiegand 26</li> <li>• Relay output operating modes: access control or notification of an exception</li> </ul>
Power supply:	12 V DC
Power consumption:	≤ 12 W
Housing:	Compact - Metal
Color:	Silver
"Index of Protection":	IP66
Operation temp:	15 °C ... 25 °C - temperature measurement only in closed rooms (stabilized temperature)
Weight:	0.76 kg
Dimensions:	112 x 220 x 41 mm (with bracket)
Length of the cable:	64 cm
Supported languages:	Polish, English, French, Spanish, German, Portuguese, Russian, Turkish, Italian
Manufacturer / Brand:	APTI



Guarantee:

3 years

## PRESENTATION

Front view:



Rear view:



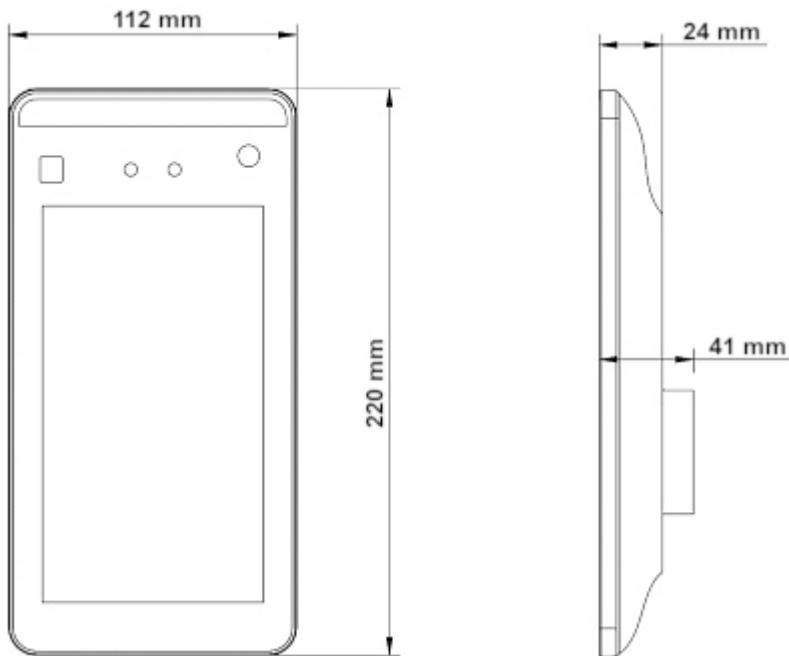
Mounting dimensions:



Connectors:

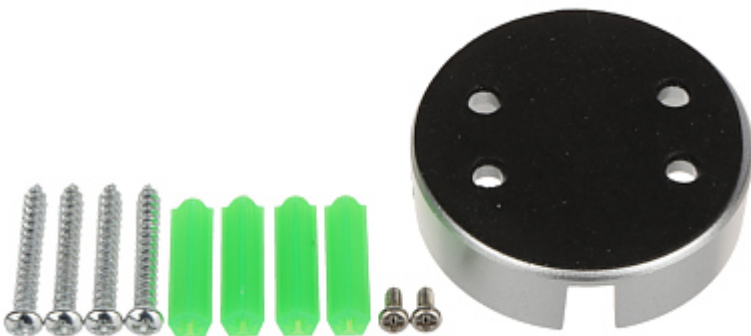


Dimensions:



Configuration and operation of the controller:

:  
In the kit:



## PACKAGE

Dimensions (L x W x H): 0x0x0 mm	Gross Weight: 0 kg
----------------------------------	--------------------

