

Code: CPR32-SE

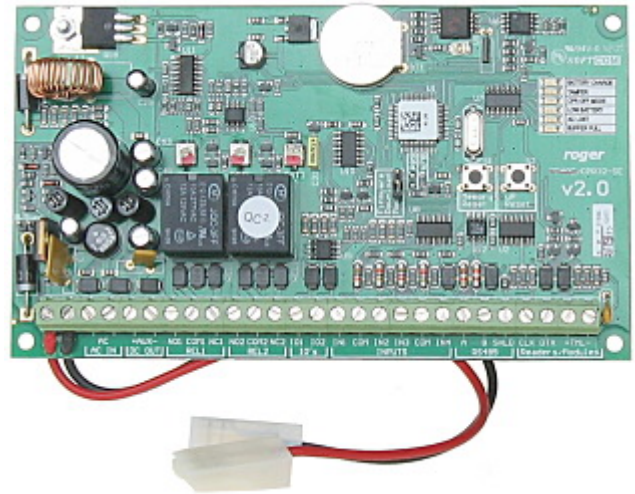
ACCESS CONTROL PANEL **CPR32-SE**

Net: **101.99 EUR** Gross: **125.45 EUR**

Access control panel is a management device of the system, makes clocks synchronization and stores the system events. For controllers without this option built-in, controls also access time schedules.

The basic advantage of the system equipped with this control panel is independence from the computer with management software, system can operate and correct stores the events when computer is not permanently connected to the system.

Control panel has also a possibility to connect an external battery and switch the system to the emergency power in case of power failure.



SPECIFICATION

Environment class:	I
Relay contacts load:	1.5 A / 30 V
Battery backup support:	<input checked="" type="checkbox"/>
Input lines:	4
Output lines:	4
Communication:	<ul style="list-style-type: none">• RS-485• RACS (Roger)
Power supply:	18 ... 22 V AC
Main features:	<ul style="list-style-type: none">• PRT series readers support• History of 250 000 events• Real-time clock and calendar• Remote programming from PC
Operation temp:	5 °C ... 40 °C
Permissible relative humidity:	10 ... 95 % (non-condensing)
Dimensions:	151 x 87 x 20 mm
Weight:	0.1 kg
Manufacturer / Brand:	ROGER
Guarantee:	2 years