

Code: OMEGA-PTZ-51H5-3

AHD, HD-CVI, HD-TVI, PAL SPEED DOME CAMERA OUTDOOR **OMEGA-PTZ-51H5-3** - 5 Mpx 2.7 ... 13.5 mm

Net: **105.68 EUR** Gross: **129.99 EUR**



Small dimensions, outdoor PTZ camera with motozoom lens.

The AHD / HD-CVI / HD-TVI interface allows to transmission of analog video signal via coaxial cable in max. 8 Mpx (4K UHD) resolution. During transmission there are no delays and is maintained the original, high quality image.

Camera is according to IP66 Index of Protection norm.

Attention! The range of IR illumination according to the manufacturer data, depends on outer conditions (visibility - air transparency, environment, wall colors ie. scene reflectance).

Change of camera ID address is done by calling two presets in succession: first preset 97, then preset with number corresponding to the new camera ID address.

SPECIFICATION

Standard:	AHD, HD-CVI, HD-TVI, CVBS
Sensor:	1/2.7 " OmniVision CMOS
Matrix size:	5.0 Mpx
Resolution:	<ul style="list-style-type: none">• AHD, HD-CVI, HD-TVI : 2560 x 1944 - 5 Mpx , 2560 x 1440 - 3.7 Mpx,• CVBS : 960 x 576 px - 960H
Range of IR illumination:	25 m
Lens:	2.7 ... 13.5 mm - Motozoom
View angle:	<ul style="list-style-type: none">• 89 ° ... 23 ° (manufacturer data)• 80 ° ... 27 ° (our tests result)
Optical zoom:	x 5
Digital zoom:	x 16
Rotation speed depending on ZOOM level:	<input checked="" type="checkbox"/>
Auto IR illuminator:	<input checked="" type="checkbox"/>
Horizontal rotation range:	0 ° ... 355 ° - Rotation of the head is limited by stops
Vertical rotation range:	0 ° ... 90 °
Rotation speed (manual control):	25 °/s (horizontal) , 20 °/s (vertical)

DELTA-OPTI Monika Matysiak; <https://www.delta.poznan.pl>
POL; 60-713 Poznań; Graniczna 10
e-mail: delta-opti@delta.poznan.pl; tel: +(48) 61 864 69 60

Preset rotation speed:	25 °/s (horizontal) 20 °/s (vertical)
PTZ control:	Via interface RS-485 Default address : 1, 2400 bps
Protocols:	Pelco-D, Pelco-P (auto detection)
S/N ratio:	> 50 dB
Video output:	AHD / HD-CVI / HD-TVI / CVBS, 1 Vpp 75 Ω
Audio:	<input type="checkbox"/>
Number of presets:	16
Route settings:	<input type="checkbox"/>
Horizontal scan:	<input type="checkbox"/>
Park action:	Calling the preset position after a specified dwell time
Alarm inputs / outputs:	<input type="checkbox"/>
Main features:	<ul style="list-style-type: none"> • ICR - Movable InfraRed filter • D-WDR - Wide Dynamic Range • Auto White Balance • Sharpness - sharper image outlines
OSD menu:	<input type="checkbox"/>
Power supply:	12 V DC / 940 mA
Power consumption:	≤ 11.3 W
Housing:	Speed Dome, Plastic
Color:	White
"Index of Protection":	IP66
Vandal-proof:	<input type="checkbox"/>
Operation temp:	-20 °C ... 60 °C
Weight:	0.49 kg
Dimensions:	Ø 111 x 107 mm
Supported languages:	English
Guarantee:	2 years

PRESENTATION

Small dimensions camera:



Bottom view:



Camera mounting side view:



Camera connectors:



1. RS-485 (+)
2. RS-485 (-)

Standard changes are made using configuration switches:



In the kit:



OUR TESTS

DELTA-OPTI Monika Matysiak; <https://www.delta.poznan.pl>
POL; 60-713 Poznań; Graniczna 10
e-mail: delta-opti@delta.poznan.pl; tel: +(48) 61 864 69 60

AHD:

Camera image at artificial illumination (about 30Lux):



Camera image at night conditions with internal built-in IR illuminator on:

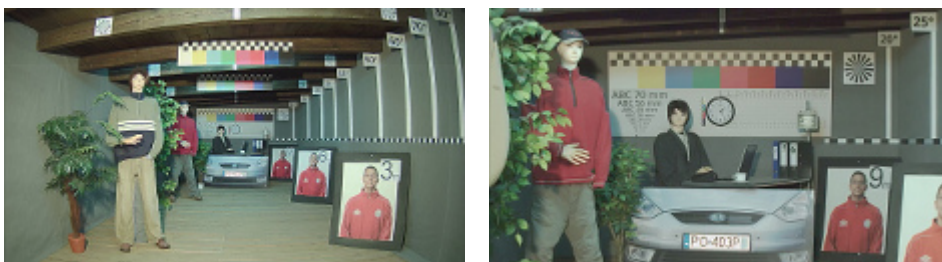


Camera image at direct strong light opposite to camera:



HD-CVI:

Camera image at artificial illumination (about 30Lux):

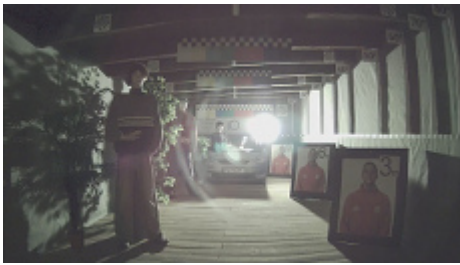


Camera image at night conditions with internal built-in IR illuminator on:



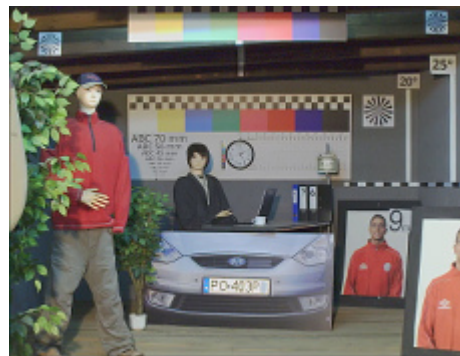


Camera image at direct strong light opposite to camera:



HD-TVI:

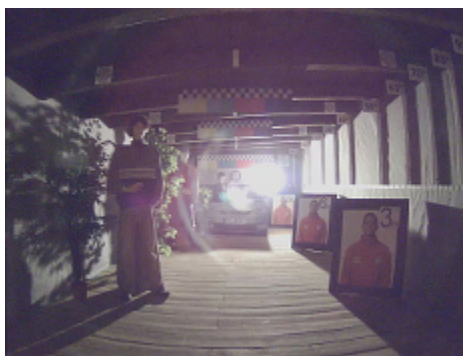
Camera image at artificial illumination (about 30Lux):



Camera image at night conditions with internal built-in IR illuminator on:



Camera image at direct strong light opposite to camera:



OUR OPINIONS



- Small dimensions camera.

