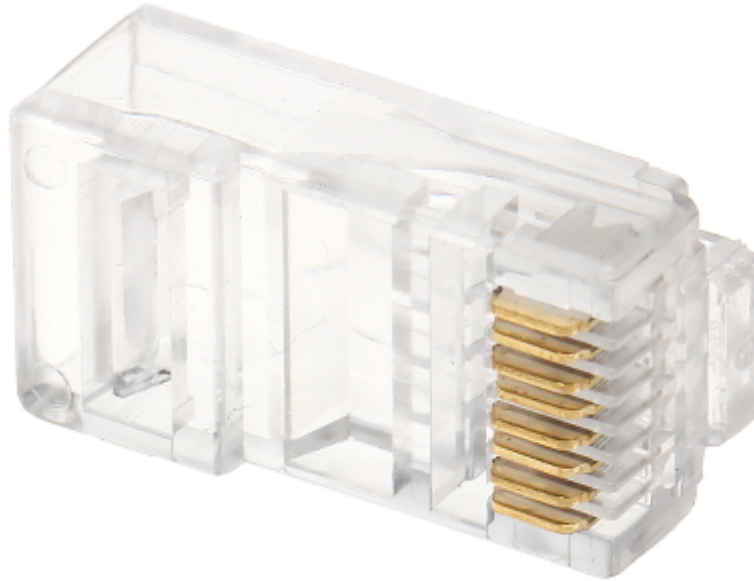


Code: RJ45/L6*P100

MODULAR PLUG **RJ45/L6*P100**

Net: **6.67 EUR** Gross: **8.20 EUR**

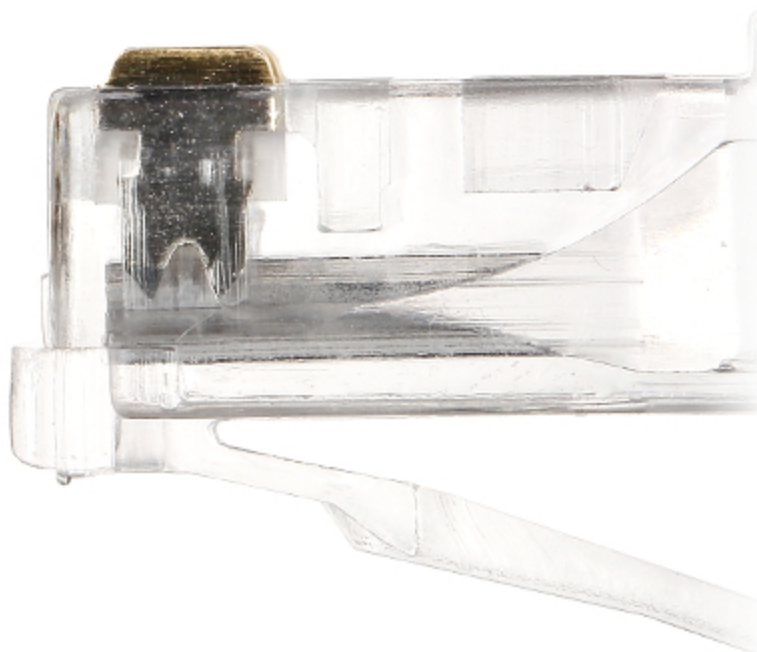


SPECIFICATION

| | |
|-----------------------------------|--|
| In package: | 100 pcs The price for package |
| Connector type: | RJ-45 - Plug, 8 pin |
| Attachment of connector elements: | Crimping |
| Wire mounting: | Clamping on each wire with 2-pin edge |
| Application: | Twisted-pair cable |
| Material: | PET |
| Example of application: | UTP cat. 6 |
| Main features: | <ul style="list-style-type: none">• Very easy and quick assembly• To crimp use the crimping tool HT-546 |
| Weight: | 0.001 kg |
| Guarantee: | 2 years |

PRESENTATION

Clamping on each wire with 2-pin edge:



Package:

