

Code: APTI-KIT-WIFI-M20D2

SURVEILLANCE KIT **APTI-KIT-WIFI-M20D2** Wi-Fi, 4 CHANNELS - 1080p

Net: **275.05 EUR** Gross: **338.31 EUR**

The surveillance kit includes 4 IP Cameras, 12" Monitor with Wi-Fi NVR, USB Mouse, and 4 Power Adaptors DC 12V/500mA for independent camera power supply and Power Adaptor DC 12V/2A for monitor with recorder power supply. The kit has been pre-configured in a way that allows to start working immediately after removing from the box and connecting the power supply. The H.265 / H.264 video compression standard using to record video data, allows to get the best possible quality of recorded image at minimal network transfer and disk storage capacity.

Network Video Recorder allowing to operate with Wi-Fi APTI cameras supported 802.11 b/g/n standards. The menu options layout has been designed for all users, even beginners can easily navigate and change parameters in DVR settings without any problem.

IP camera with efficient H.264 / H.265 image compression algorithm for clear and smooth video streaming at maximal resolution of 1920 x 1080 (1080p). The used Wi-Fi module allows for remote communication up to several dozen meters (the distance depends on obstacles between the antennas). Camera is according to IP67 Index of Protection norm.



SPECIFICATION

Screen size:	12 "
Resolution:	1920 x 1080 px @ 60 Hz , 1280 x 1024 px @ 60 Hz , 1280 x 720 px @ 60 Hz , 1024 x 768 px @ 60 Hz
Aspect ratios:	16 : 9
Speakers built-in:	✓
Housing type:	Plastic

Recorder:

Standard:	TCP/IP
Supported resolutions:	max. 8 Mpx - 3072 x 2592 px
Audio support:	4 Channels - Audio from cameras
Video outputs:	—
Audio inputs:	—
Audio outputs:	—
Image compression method:	H.265+ / H.265 / H.264+ / H.264
Supported hard drives:	1 x 8 TB SATA 2.5 "
Recording modes:	Manual, Motion Detection, Schedule
Network protocols:	TCP/IP, HTTP, UPnP, DNS, NTP, SMTP, DHCP, FTP, DDNS, RTP, RTSP, RTCP, P2P
External storage devices backup:	Records backup at (.avi) format to USB (pendrive)
Searching and playback the records:	Records searching: timeline or file list. Playback: forward, fast Channels played simultaneously : 1 @ 8 / 5 / 4 Mpx, 2 @ 3 Mpx, 4 @ 1080p / 960p / 720p



DELTA-OPTI Monika Matysiak; <https://www.delta.poznan.pl>
POL; 60-713 Poznań; Graniczna 10
e-mail: delta-opti@delta.poznan.pl; tel: +(48) 61 864 69 60

Network functions:	Network Client Software and IE browser: live view, playback and backup of the records, configuration of the recorder parameters Full support via network, Remote records copying, Web Server built-in Wi-Fi : 2.4 GHz - Apti cameras support, Range : 300 m (open area)
ONVIF:	2.4
Mobile phones support:	Port no.: 554 or access by a cloud (P2P) • Android: Free application BitVision • iOS (iPhone): Free application BitVision
Default IP address:	192.168.1.168
Default admin user / password:	admin / 12345
Web browser access ports:	80, 5000, 554
PC client access ports:	80, 5000, 554
Mobile client access ports:	80, 5000, 554
Port ONVIF:	80
Alarm inputs / outputs:	—
Port USB:	1 pcs USB 2.0
PTZ control:	—
Motion Detection:	Split the screen into zones : 22 x 18 motion zones
Mouse support:	✓
IR remote controller in the set:	—
Main features:	Comparison of faces with images from the database (1 database with max. 10 images)

Recorder + Monitor:

Power supply:	12 V DC / 2 A (power adapter included)
Weight:	0.94 kg
Dimensions:	• 288 x 255 x 140 mm (with stand) • 288 x 207 x 35 mm (without stand)
Supported languages:	Polish, English, Bulgarian, Czech, French, Greek, Spanish, Dutch, German, Portuguese, Russian, Romanian, Turkish, Hungarian, Italian

Camera:

Standard:	TCP/IP
Sensor:	1/2.9 " Progressive Scan CMOS
Matrix size:	2.1 Mpx
Resolution:	1920 x 1080 - 1080p
Operation modes:	• Main stream : 1920 x 1080 • Sub stream : 720 x 480
Lens:	3.6 mm
View angle:	79 °
Range of IR illumination:	25 m
RS-485 interface:	—
Memory card slot:	—
Image compression method:	H.265 / H.265+ / H.264 / H.264+
Alarm inputs / outputs:	—
Audio:	Microphone built-in
Main stream frame rate:	15 fps @ 1080p



Network interface:	Wi-Fi - 2.4 GHz, IEEE 802.11 b/g/n
Network protocols:	TCP/IP, ICMP, RTP, RTSP, RTCP
ONVIF:	—
Mobile phones support:	—
Default IP address:	192.168.1.168
Default admin user / password:	admin / - The administrator password should be set at the first start
Web browser access ports:	—
PC client access ports:	—
Mobile client access ports:	—
Port ONVIF:	—
WEB Server:	—
Max. number of on-line users:	—
RTSP URL:	—
Main features:	<ul style="list-style-type: none"> • Wi-Fi Module - IEEE 802.11 b/g/n, Range : 300 m (open area) ; 3 dBi Antenna - SMA socket • WB - White Balance • Day/night mode • ICR - Movable InfraRed filter • Flicker Control - The technology eliminates the tiring eyes flickering image effect • Configurable: brightness, contrast, saturation • Motion Detection • Configurable Privacy Zones • Mirror - Mirror image • Sharpness - sharper image outlines • RESET button
Power supply:	12 V DC / 300 mA
Power consumption:	≤ 3.6 W
Housing:	Dome - Metal
Color:	White
Vandal-proof:	✓
"Index of Protection":	IP67
Operation temp:	-20 °C ... 60 °C
Weight:	0.33 kg
Dimensions:	Ø 72 x 98 mm
Supported languages:	—
General information:	
Cameras amount:	4 pcs
Power adapter:	4 pcs : 12 V / 500 mA , 1 pcs : 12 V / 2 A
Connecting cable:	—
Manufacturer / Brand:	APTI
Guarantee:	2 years

PRESENTATION

Recorder with monitor:



DELTA-OPTI Monika Matysiak; <https://www.delta.poznan.pl>
POL; 60-713 Poznań; Graniczna 10
e-mail: delta-opti@delta.poznan.pl; tel: +(48) 61 864 69 60



Front view:



Rear view:



Connectors:



ON/OFF button:

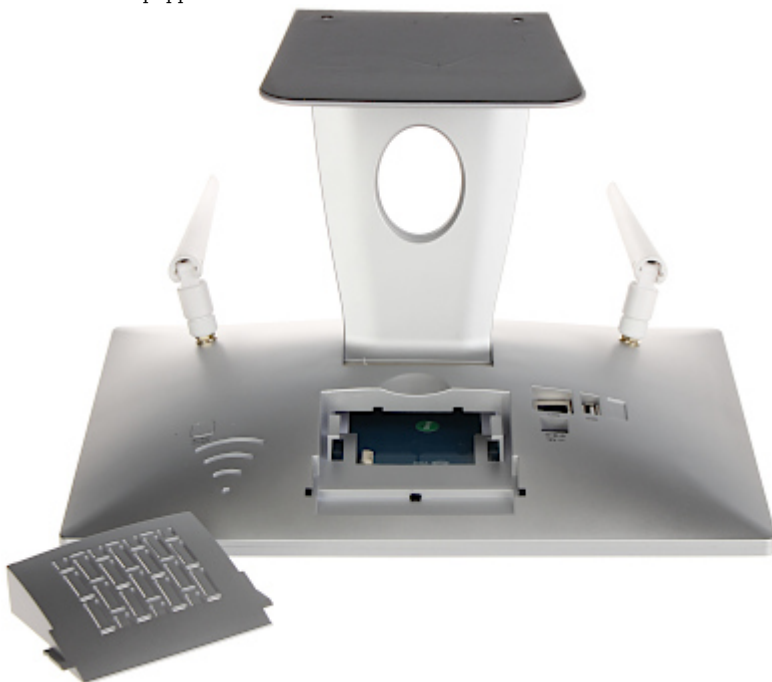


The monitor stand allows to change the position of the screen from horizontal to vertical:





The device is equipped with SATA 2.5" HDD mobile rack:



CAMERA:



Camera mounting side view:



In the kit:



Package:



PACKAGE

Dimensions (L x W x H): 0x0x0 mm	Gross Weight: 0 kg
----------------------------------	--------------------