

Code: SD22404T-GN-W

IP SPEED DOME CAMERA OUTDOOR **SD22404T-GN-W** Wi-Fi, - 4 Mpx 2.7 ... 11 mm DAHUA

Net: **322.37 EUR** Gross: **396.52 EUR**

IP camera equipped with very good high resolution sensor. Due to above it is perfect solution for surveillance systems requiring persons or vehicles recognition. The used Wi-Fi module allows to remote communication with camera for max. distance up to 50 m. For a few models of IP cameras working at 4Mpx resolution we recommend to use of network with 1Gb/s bandwidth.



SPECIFICATION

Standard:	TCP/IP
Sensor:	1/3 " Progressive Scan CMOS
Matrix size:	4 Mpx
Resolution:	2592 x 1520 - 4 Mpx , 2304 x 1296 - 3 Mpx , 1920 x 1080 - 1080p 1280 x 960 - 1.3 Mpx 1280 x 720 - 720p
IR illuminator:	—
Lens:	2.7 ... 11 mm
View angle:	• 113 ° ... 30 ° (manufacturer data) • 100 ° ... 33 ° (our tests result)
Optical zoom:	x 4
Digital zoom:	x 16
Min. illumination:	0.05 Lux (color) 0.005 Lux (B/W)
S/N ratio:	> 50 dB (AGC off)
Preset rotation speed:	• 100 °/s (horizontal) • 60 °/s (vertical)
Rotation speed (manual control):	• 0.1 °/s ... 100 °/s (horizontal) • 0.1 °/s ... 60 °/s (vertical)
Horizontal rotation range:	0 ... 355 ° - Rotation of the head is limited by stops
Vertical rotation range:	0 ° ... 90 °
Protocols:	DH-SD
RS-485 interface:	—
Number of presets:	300

DELTA-OPTI Monika Matysiak; <https://www.delta.poznan.pl>
POL; 60-713 Poznań; Graniczna 10
e-mail: delta-opti@delta.poznan.pl; tel: +(48) 61 864 69 60

Horizontal scan:	✓
Route settings:	5
Image compression method:	H.265 / H.264 / MJPEG
Audio:	—
Bitrate:	448 ... 8192 kbps
Alarm inputs / outputs:	—
Main stream frame rate:	25 fps @ 4 Mpx
Network interface:	10/100 Base-TX (RJ-45)
Network protocols:	IPv4/IPv6, HTTP, HTTPS, SSL, TCP/IP, UDP, UPnP, ICMP, IGMP, SNMP, RTSP, RTP, SMTP, NTP, DHCP, DNS, PPPoE, DDNS, FTP, IP Filter, QoS, Bonjour, IEEE 802.1x
Memory card slot:	Micro SD memory cards up to 256GB support (possible local recording)
WEB Server:	Built-in, NVR compliance
Max. number of on-line users:	20
ONVIF:	16.12
Mobile phones support:	Port 37777 <ul style="list-style-type: none"> • Android: Free application gDMSS Plus or DMSS • iOS (iPhone): Free application iDMSS Plus or DMSS
Main features:	<ul style="list-style-type: none"> • Wi-Fi module - IEEE 802.11 a/b/g/n/ac, Range : 50 m (open area) ; Antenna - SMA socket • WDR - 120 dB - Wide Dynamic Range • 2D-DNR, 3D-DNR - Digital Noise Reduction • F-DNR (Defog) - Reduction of image noise caused by precipitation • ROI - improve the quality of selected parts of image • BLC/HLC - Back Light / High Light Compensation • Configurable Privacy Zones • Motion Detection • Sharpness - sharper image outlines • ICR - Movable InfraRed filter • Mirror - Mirror image • AGC - Automatic Gain Control • Day/Night mode (color/b&w/auto) • IVS analysis : face detection, crossing the line (tripwire), intrusion, abandoned/missing object
Power supply:	12 V DC / 830 mA
Power consumption:	≤ 10 W
Housing:	Speed Dome, Metal
Color:	White
Supported languages:	Polish, English
Operation temp:	-30 °C ... 60 °C
"Index of Protection":	IP66
Vandal-proof:	IK10
Weight:	0.62 kg
Dimensions:	Ø 123 x 89 mm
Manufacturer / Brand:	DAHUA
Guarantee:	3 years

PRESENTATION



DELTA-OPTI Monika Matysiak; <https://www.delta.poznan.pl>
POL; 60-713 Poznań; Graniczna 10
e-mail: delta-opti@delta.poznan.pl; tel: +(48) 61 864 69 60

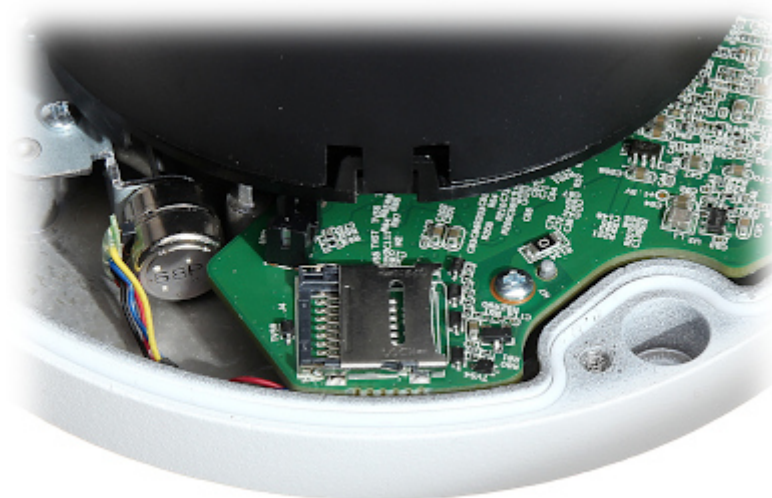
Camera view after remove the Dome cover:



Memory card slot:

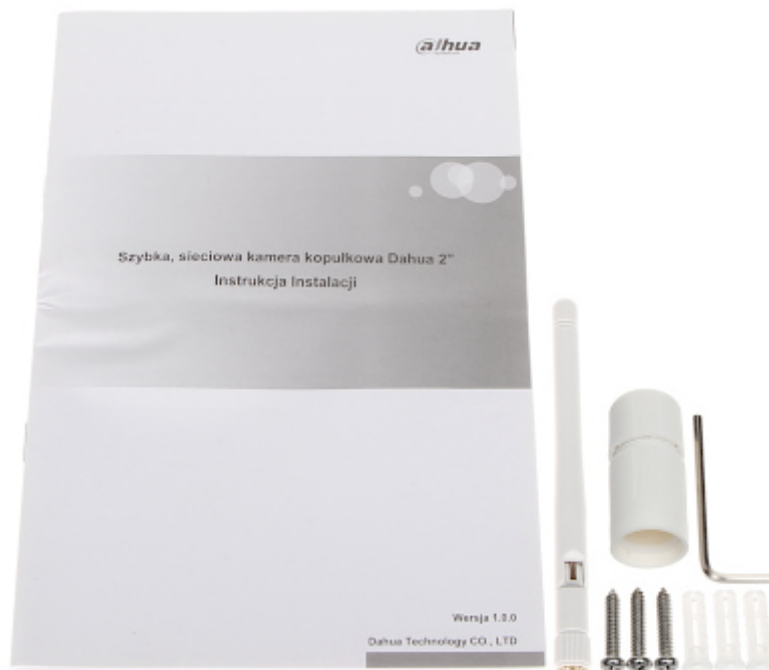


Camera mounting dimensions:



See how to initialize DAHUA cameras:

In the kit:

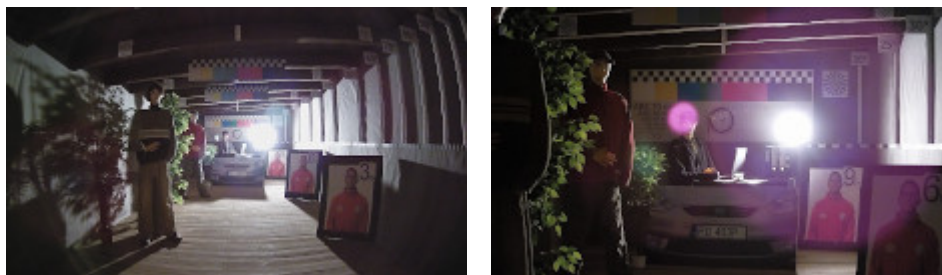


OUR TESTS

Camera image at artificial illumination (about 30Lux):



Camera image at direct strong light opposite to camera:



Camera image at night conditions with external IR illuminator on:



DELTA-OPTI Monika Matysiak; <https://www.delta.poznan.pl>
POL; 60-713 Poznań; Graniczna 10
e-mail: delta-opti@delta.poznan.pl; tel: +(48) 61 864 69 60

Camera image at night conditions, at different illumination values show below:

10 LUX:



1 LUX:



0.1 LUX:

