

Code: DS-2CD2141G1-IDW1(2.8MM)(D)

IP CAMERA **DS-2CD2141G1-IDW1(2.8MM)(D)** Wi-Fi 4 Mpx Hikvision

Net: **125.21 EUR** Gross: **154.01 EUR**

IP camera with efficient H.265 / H.264 image compression algorithm for clear and smooth video streaming at maximal resolution of 4 MPx.

The used Wi-Fi module allows to remote communication with camera for max. distance up to 50 m.

Note: Connection to the Hik-Connect cloud is only possible via the camera's cable interface.



SPECIFICATION

Standard:	TCP/IP
Sensor:	1/3 " Progressive Scan CMOS
Matrix size:	4 Mpx
Resolution:	2560 x 1440 - 3.7 Mpx , 2304 x 1296 - 3 Mpx , 1920 x 1080 - 1080p , 1280 x 720 - 720p
Lens:	2.8 mm
View angle:	<ul style="list-style-type: none">• 100 ° (manufacturer data)• 92 ° (our tests result)
Range of IR illumination:	30 m
RS-485 interface:	—
Image compression method:	H.265+ / H.265 / H.264+ / H.264 / MJPEG
Alarm inputs / outputs:	—
Audio:	<ul style="list-style-type: none">• Microphone built-in,• Audio transmission via network
Memory card slot:	Micro SD memory cards up to 128GB support (possible local recording)
Main stream frame rate:	<ul style="list-style-type: none">• 20 fps @ 3.7 Mpx• 25 fps @ 3 Mpx
Network interface:	10/100 Base-T (RJ-45)

DELTA-OPTI Monika Matysiak; <https://www.delta.poznan.pl>
POL; 60-713 Poznań; Graniczna 10
e-mail: delta-opti@delta.poznan.pl; tel: +(48) 61 864 69 60

Network protocols:	TCP/IP, ICMP, HTTP, HTTPS, FTP, DHCP, DNS, DDNS, RTP, RTSP, RTCP, PPPoE, NTP, UPnP, SMTP, SNMP, IGMP, QoS, IPv6, UDP, Bonjour
WEB Server:	Built-in
Max. number of on-line users:	6
ONVIF:	18.12
Mobile phones support:	Port no.: 8000 or access by a cloud (P2P) <ul style="list-style-type: none"> • Android: Free application iVMS-4500 or Hik-Connect • iOS (iPhone): Free application iVMS-4500 or Hik-Connect
Default admin user / password:	admin / - The administrator password should be set at the first start
Default IP address:	192.168.1.64
Web browser access ports:	80
PC client access ports:	Port no.: 8000 or access by a cloud (P2P) - iVMS-4200 application
Mobile client access ports:	8000
Port ONVIF:	80
RTSP URL:	<ul style="list-style-type: none"> • Main stream : rtsp://user:password@192.168.1.64:554/Streaming/Channels/101/ - with authorization • Sub stream : rtsp://user:password@192.168.1.64:554/Streaming/Channels/102/ - with authorization
Main features:	<ul style="list-style-type: none"> • Wi-Fi Module - IEEE 802.11 b/g/n, Range : 50 m (open area) • D-WDR - Wide Dynamic Range • 3D-DNR - Digital Noise Reduction • ROI - improve the quality of selected parts of image • BLC - Back Light Compensation • Possibility to change the resolution, quality and bit rate • RESET button • Motion Detection • Configurable Privacy Zones • Watermark • Mirror - Mirror image • Sharpness - sharper image outlines
Power supply:	12 V DC / 500 mA
Power consumption:	≤ 6 W
Housing:	Dome, Plastic
Vandal-proof:	—
"Index of Protection":	IP66
Color:	White
Operation temp:	-30 °C ... 60 °C
Weight:	0.46 kg
Dimensions:	Ø 121 x 92 mm
Supported languages:	Polish, English, French, Spanish, Portuguese, Russian, Turkish, Italian
Manufacturer / Brand:	Hikvision
SAP Code:	311312940
Guarantee:	3 years

PRESENTATION

Camera view after remove the Dome cover:



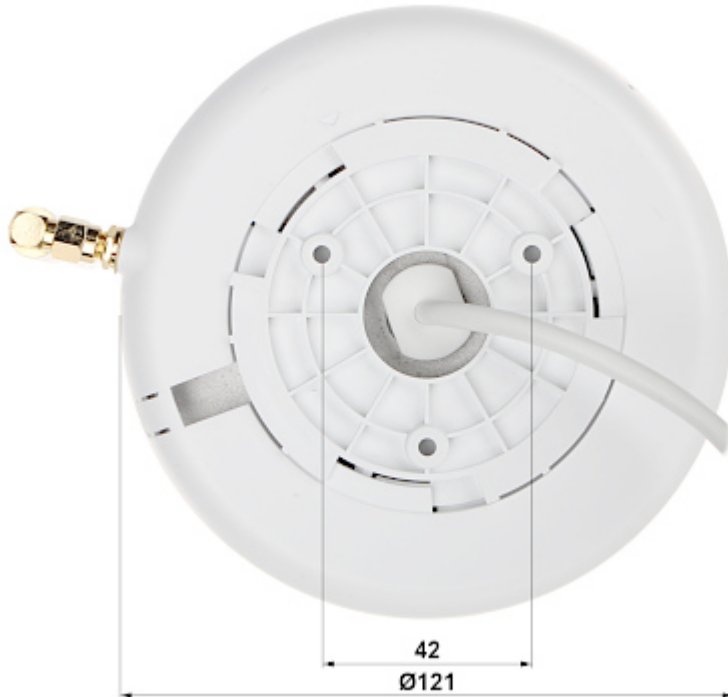
DELTA-OPTI Monika Matysiak; <https://www.delta.poznan.pl>
POL; 60-713 Poznań; Graniczna 10
e-mail: delta-opti@delta.poznan.pl; tel: +(48) 61 864 69 60



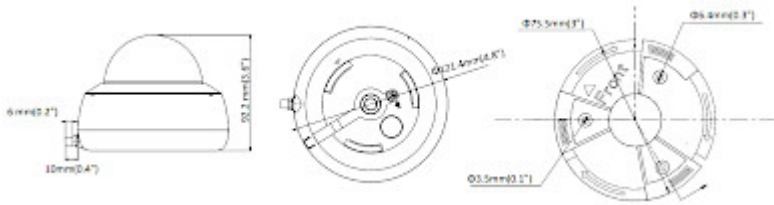
Memory card slot and "Reset" button:



Mounting side view:



Camera dimensions:



In the kit:



OUR TESTS

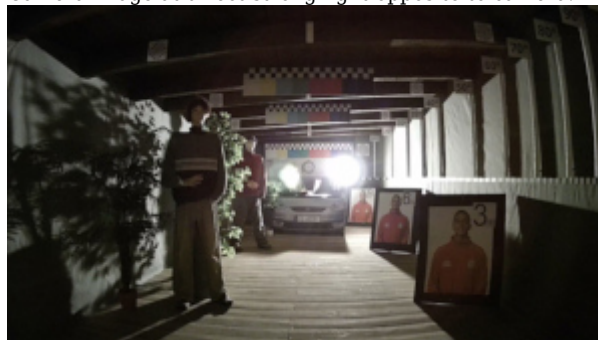
Camera image at artificial illumination (about 30Lux):



Camera image at night conditions with internal built-in IR illuminator on:



Camera image at direct strong light opposite to camera:



PACKAGE

Dimensions (L x W x H): 0x0x0 mm	Gross Weight: 0 kg
----------------------------------	--------------------

DELTA-OPTI Monika Matysiak; <https://www.delta.poznan.pl>
 POL; 60-713 Poznań; Graniczna 10
 e-mail: delta-opti@delta.poznan.pl; tel: +(48) 61 864 69 60



DELTA-OPTI Monika Matysiak; <https://www.delta.poznan.pl>
POL; 60-713 Poznań; Graniczna 10
e-mail: delta-opti@delta.poznan.pl; tel: +(48) 61 864 69 60