

Code: LE-606605

SWITCH DISCONNECTOR WITH FUSE **LE-606605** ONE-PHASE 20 A D02 LEGRAND

Net: **17.08 EUR** Gross: **21.01 EUR**

Switch disconnectors with fuse links is a combination of two functions in one device - a switch disconnecter and overcurrent protection realized by a fuse element. The devices protect the electrical installation against the effects of short-circuits and overloads, and after removing the fuse link provide a visible insulation break. The LE-606605 switch disconnecter is compatible to TH-35 rail mounting system.



SPECIFICATION

| | |
|----------------------------------|------------------------------|
| Device type: | One-phase |
| Rated current: | 20 A |
| Number of poles: | 1 |
| Rated voltage: | 230 / 400 V AC |
| Rated insulation voltage: | 500 V |
| Rated impulse withstand voltage: | 6000 V |
| Fusing characteristics: | gL/gG |
| Type (size): | D02 |
| Breaking capacity: | 50000 A AC |
| Connectors type: | cable terminals |
| Wire gauge: | 2.5 ... 25 mm ² |
| Environment class: | II |
| Housing: | Plastic, TH-35 rail mounting |
| Width in 17.5 mm modules: | 1.5 |
| Operation temp: | -26 °C ... 60 °C |
| Weight: | 0.172 kg |
| Dimensions: | 83 x 70.3 x 26.5 mm |

DELTA-OPTI Monika Matysiak; <https://www.delta.poznan.pl>
POL; 60-713 Poznań; Graniczna 10
e-mail: delta-opti@delta.poznan.pl; tel: +(48) 61 864 69 60

| | |
|-----------------------|---------|
| Manufacturer / Brand: | LEGRAND |
| Guarantee: | 2 years |

PRESENTATION

Front view:



Open cover of fuse links:



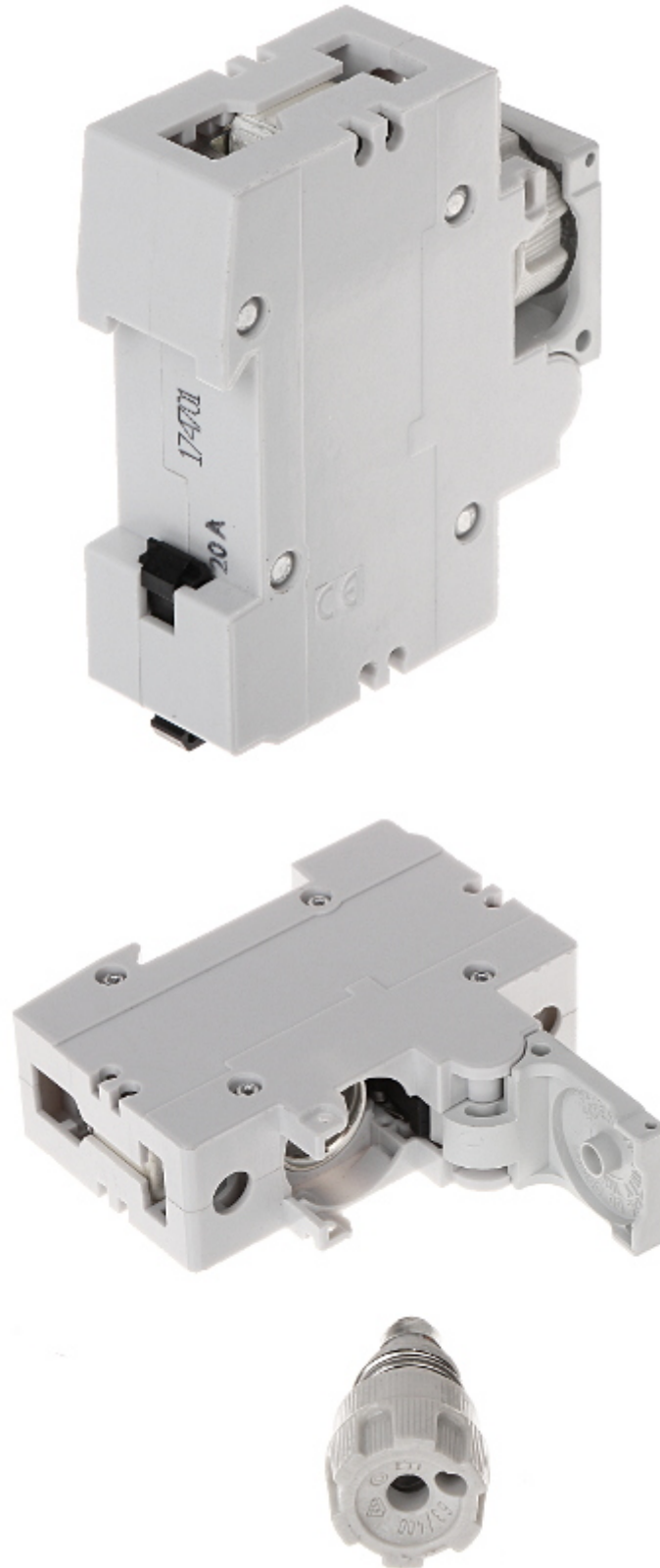
Bottom view:



Top view:



Mounting side view:



In the kit:

