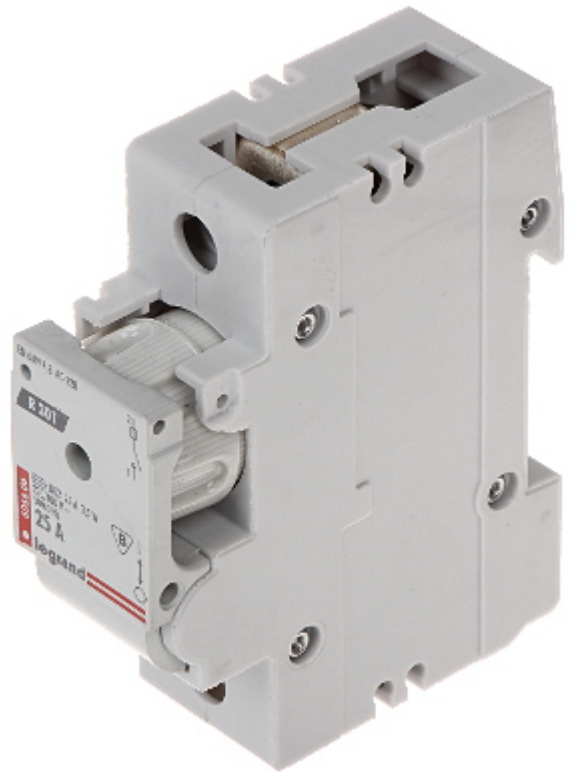


Code: LE-606606

# SWITCH DISCONNECTOR WITH FUSE **LE-606606** ONE-PHASE 25 A D02 LEGRAND

Net: **85.68 PLN** Gross: **105.39 PLN**

Switch disconnectors with fuse links is a combination of two functions in one device - a switch disconnecter and overcurrent protection realized by a fuse element. The devices protect the electrical installation against the effects of short-circuits and overloads, and after removing the fuse link provide a visible insulation break. The LE-606606 switch disconnecter is compatible to TH-35 rail mounting system.



## SPECIFICATION

Device type:	One-phase
Rated current:	25 A
Number of poles:	1
Rated voltage:	230 / 400 V AC
Rated insulation voltage:	500 V
Rated impulse withstand voltage:	6000 V
Fusing characteristics:	gL/gG
Type (size):	D02
Breaking capacity:	50000 A AC
Connectors type:	cable terminals
Wire gauge:	2.5 ... 25 mm <sup>2</sup>
Environment class:	II
Housing:	Plastic, TH-35 rail mounting
Width in 17.5 mm modules:	1.5
Operation temp:	-26 °C ... 60 °C
Weight:	0.172 kg
Dimensions:	83 x 70.3 x 26.5 mm

DELTA-OPTI Monika Matysiak; <https://www.delta.poznan.pl>  
POL; 60-713 Poznań; Graniczna 10  
e-mail: [delta-opti@delta.poznan.pl](mailto:delta-opti@delta.poznan.pl); tel: +(48) 61 864 69 60

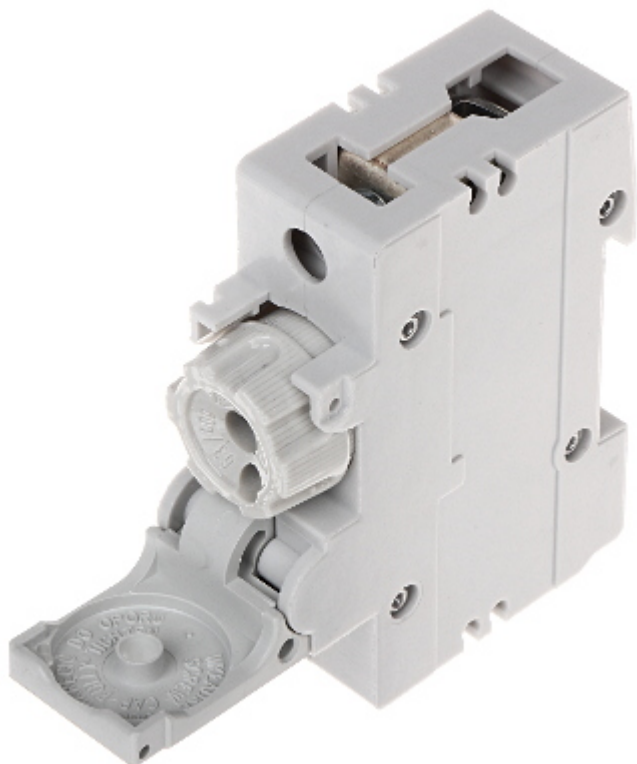
Manufacturer / Brand:	LEGRAND
Guarantee:	2 years

## PRESENTATION

Front view:



Open cover of fuse links:



Bottom view:

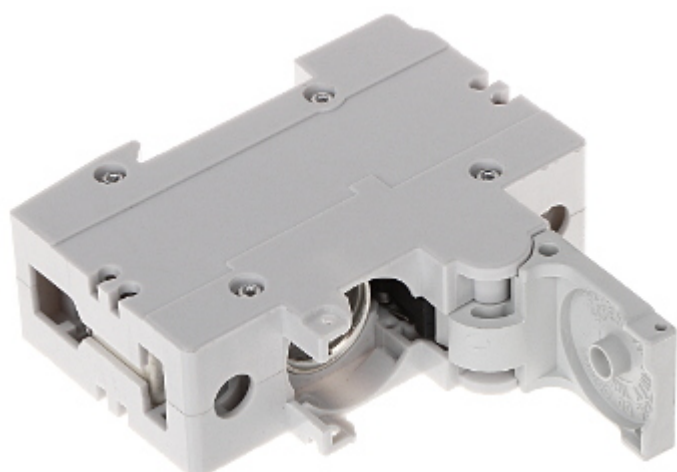
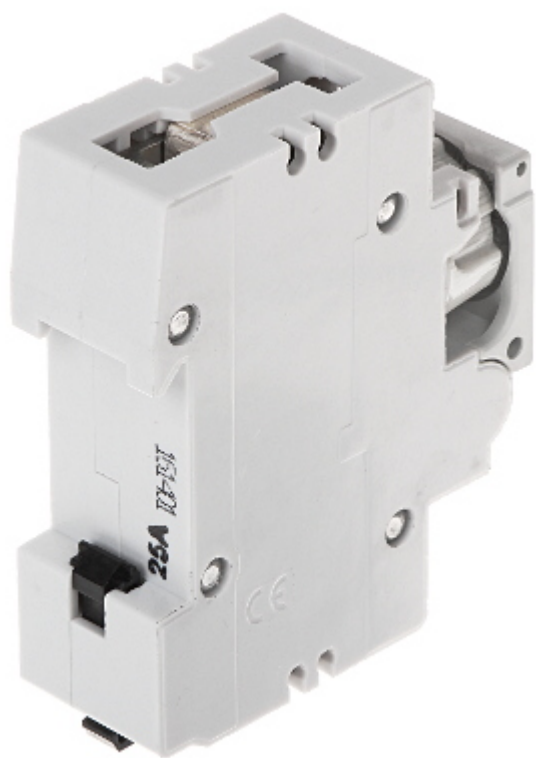


Top view:



Mounting side view:





In the kit:



**PACKAGE**

Dimensions (L x W x H): 0x0x0 mm	Gross Weight: 0 kg
----------------------------------	--------------------

