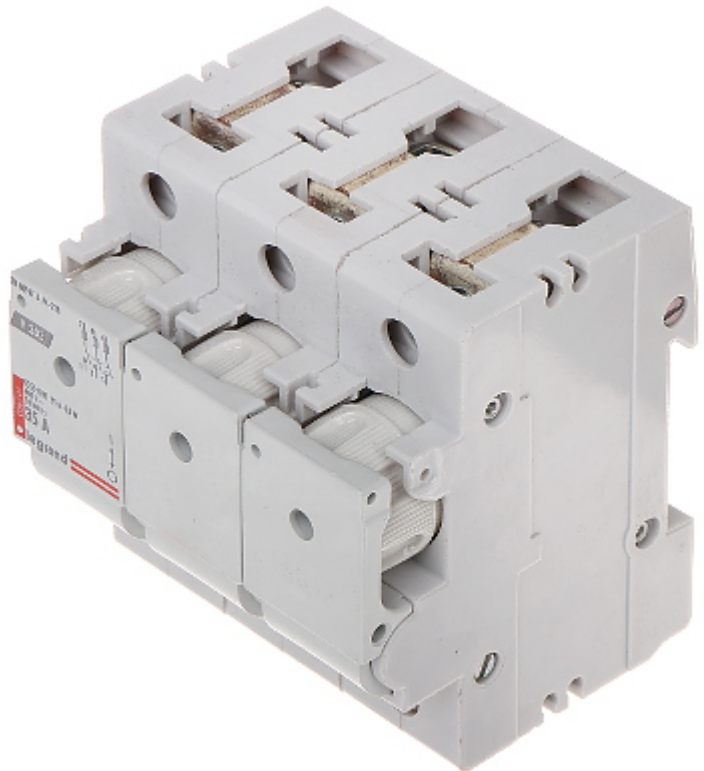


Code: LE-606707

SWITCH DISCONNECTOR WITH FUSE **LE-606707** THREE-PHASE 35 A D02 LEGRAND

Net: 247.29 PLN Gross: 304.17 PLN

Switch disconnectors with fuse links is a combination of two functions in one device - a switch disconnector and overcurrent protection realized by a fuse element. The devices protect the electrical installation against the effects of short-circuits and overloads, and after removing the fuse link provide a visible insulation break. The LE-606707 switch disconnector is compatible to TH-35 rail mounting system.



SPECIFICATION

Device type:	Three-phase
Rated current:	35 A
Number of poles:	3
Rated voltage:	400 V AC
Rated insulation voltage:	500 V
Rated impulse withstand voltage:	6000 V
Fusing characteristics:	gL/gG
Type (size):	D02
Breaking capacity:	50000 A AC
Connectors type:	cable terminals
Wire gauge:	2.5 ... 25 mm ²
Environment class:	II
Housing:	Plastic, TH-35 rail mounting
Width in 17.5 mm modules:	4.5
Operation temp:	-26 °C ... 60 °C
Weight:	0.528 kg
Dimensions:	83 x 70.3 x 79.5 mm

DELTA-OPTI Monika Matysiak; <https://www.delta.poznan.pl>
POL; 60-713 Poznań; Graniczna 10
e-mail: delta-opti@delta.poznan.pl; tel: +(48) 61 864 69 60

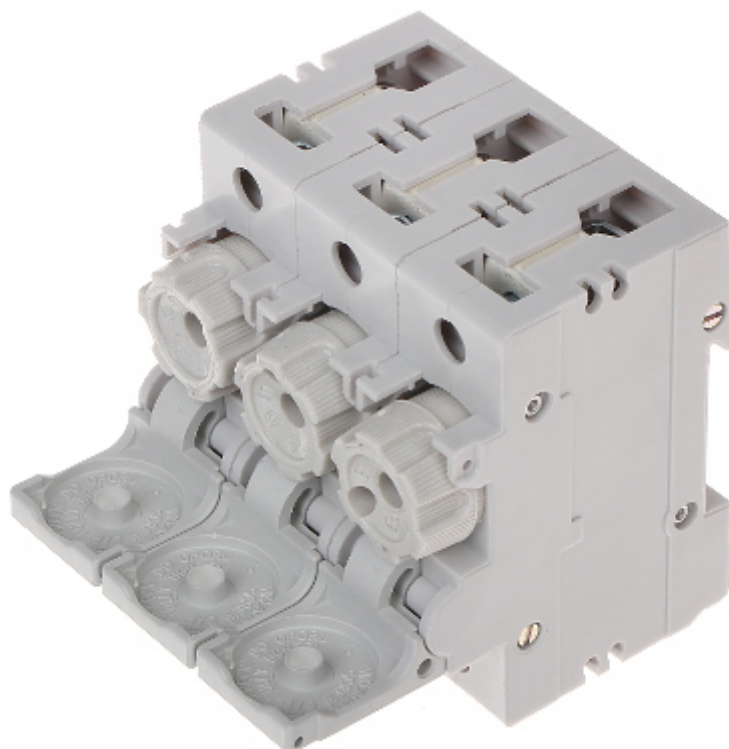
Manufacturer / Brand:	LEGRAND
Guarantee:	2 years

PRESENTATION

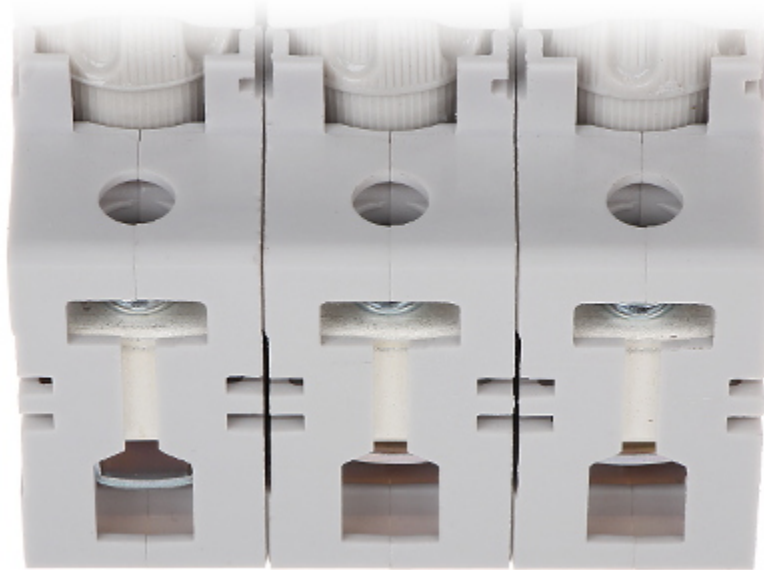
Front view:



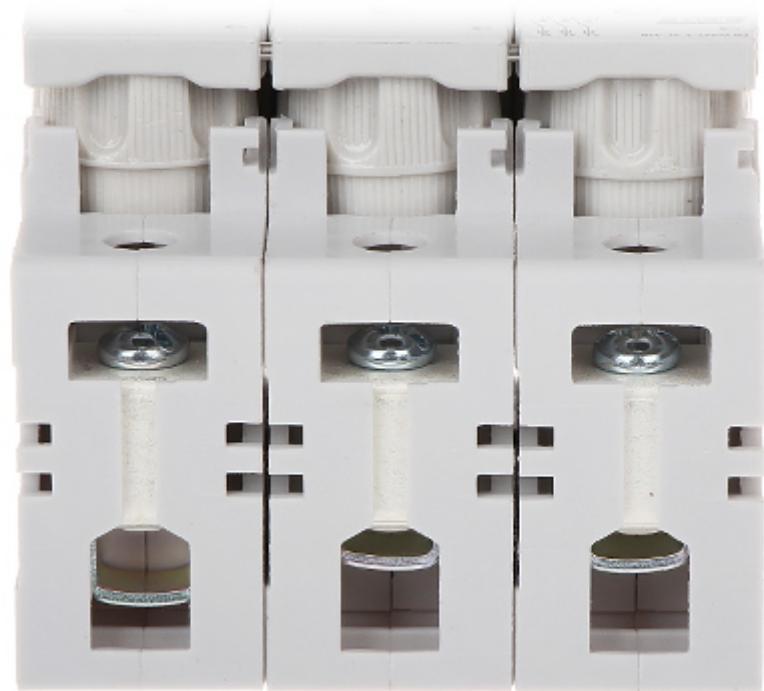
Open cover of fuse links:



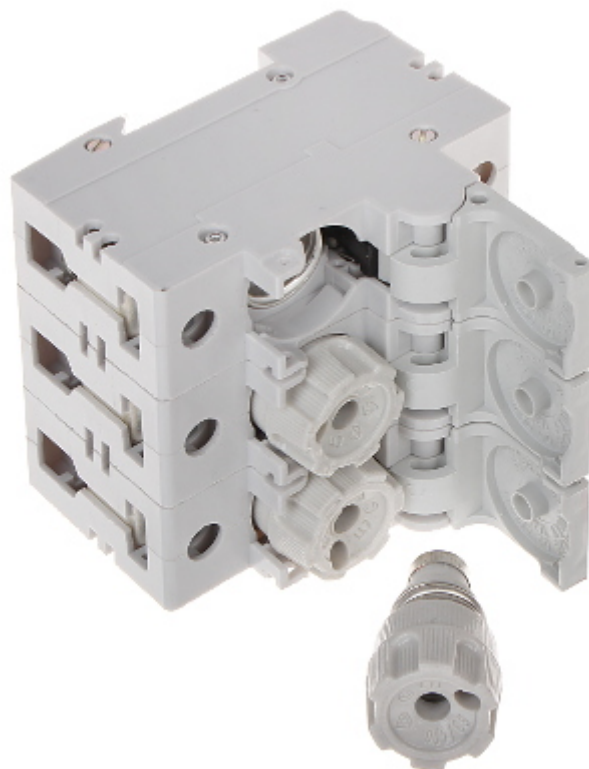
Bottom view:



Top view:



Mounting side view:



In the kit:

