

Code: MAGIC-JOINT-Y6

## BRANCH JOINT GELBOX **MAGIC-JOINT-Y6** IP68 RayTech

Net: 17.26 EUR Gross: 21.23 EUR

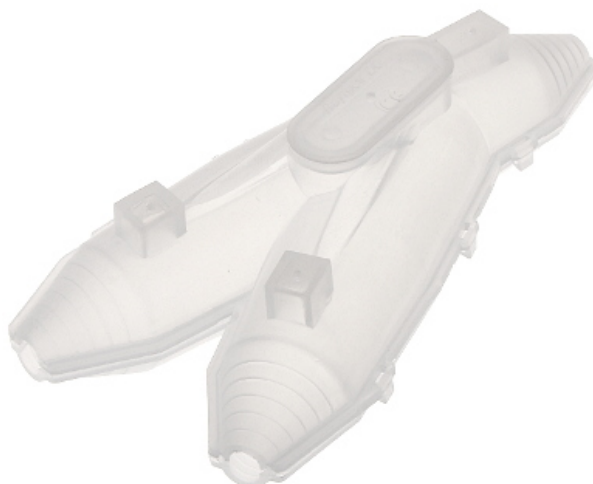
Branch injectable joint to fill with the sealing gel included. Innovative packaging system of a two-component sealing gel allows fast and thorough mixing of ingredients without the use of additional containers and tools. Quick and clean installation with the possibility of easy gel removal and re-make the connection allows for multiple use of the joint. The gel used to seal is not harmful to humans, environmentally safe, and easily removable when it is necessary to modify the connection.



### SPECIFICATION

"Index of Protection":	IP68
Wire gauge:	max. 4 x 6 mm <sup>2</sup> @ IP68
Main features:	<ul style="list-style-type: none"><li>• The product is dedicated to protecting electrical connections,</li><li>• Gel color : Blue, Translucent</li></ul>
Weight:	0.3 kg
Internal dimensions:	135 x 35 x 40 mm
External dimensions:	180 x 90 x 45 mm
Installation temperature:	-15 °C ... 60 °C
Operation temp:	≤ 90 °C
Manufacturer / Brand:	RayTech
Guarantee:	2 years

### PRESENTATION

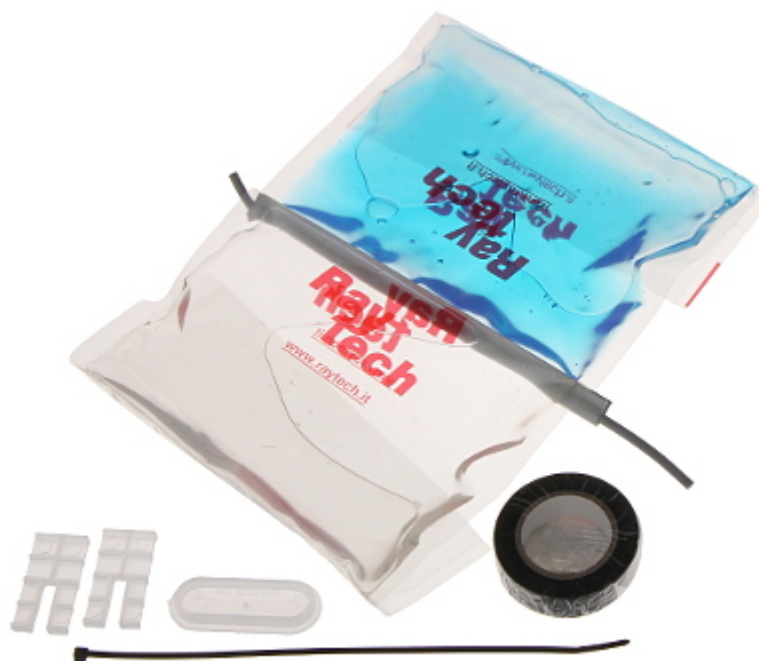


DELTA-OPTI Monika Matysiak; <https://www.delta.poznan.pl>  
POL; 60-713 Poznań; Graniczna 10  
e-mail: delta-opti@delta.poznan.pl; tel: +(48) 61 864 69 60

Method of mounting:

:

In the kit:



Package:

