

Code: RAPID-JOINT-L1.5-IP68

STRAIGHT JOINT GELBOX **RAPID-JOINT-L1.5-IP68** RayTech

Net: **22.52 EUR** Gross: **22.52 EUR**

Straight type joint pre-filled with sealing gel. The product meets the IP68 tightness class. The box is perfect to use in areas with high moisture and underground (for example in electrical garden installations).

The gel used to seal is not harmful to humans, environmentally safe, and easily removable when it is necessary to modify the connection.



SPECIFICATION

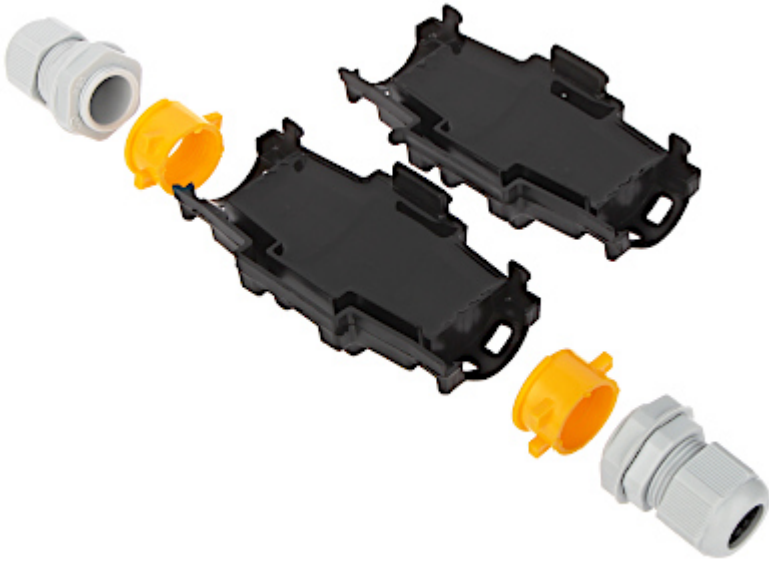
Voltage insulation:	1 kV
"Index of Protection":	IP68
Weight:	0.16 kg
Wire gauge:	max. 5 x 1.5 mm ² @ IP68 max. 5 x 6 mm ² @ IPx8
Internal dimensions:	150 x 45 x 32 mm
External dimensions:	183 x 55 x 44 mm
Manufacturer / Brand:	RayTech
Guarantee:	2 years

PRESENTATION

Internal view:



DELTA-OPTI Monika Matysiak; <https://www.delta.poznan.pl>
POL; 60-713 Poznań; Graniczna 10
e-mail: delta-opti@delta.poznan.pl; tel: +(48) 61 864 69 60



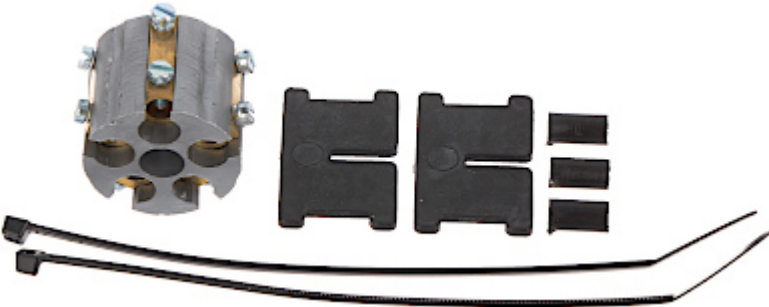
connector:



Method of mounting:

:

In the kit:



PACKAGE

Dimensions (L x W x H): 0x0x0 mm	Gross Weight: 0 kg
----------------------------------	--------------------