

Code: SE-2X60-G

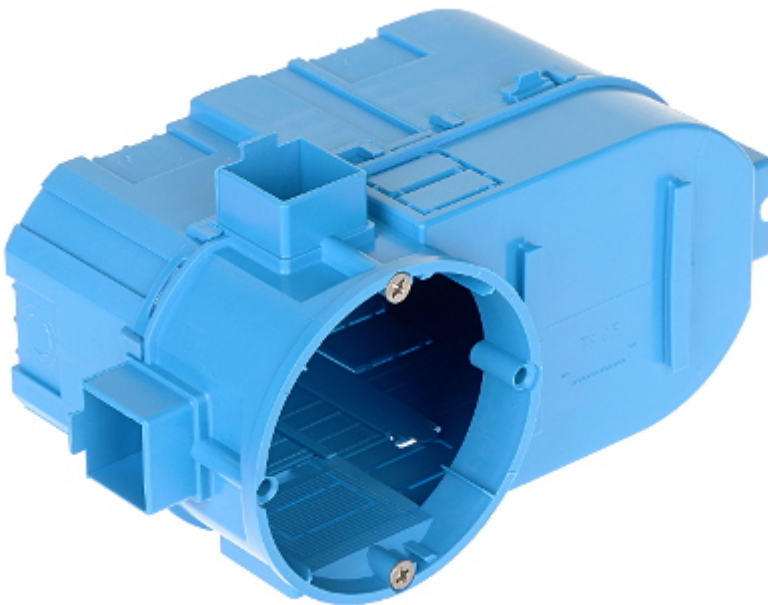
FLUSH BOX 2-GANG SE-2X60-G SIMET

Net: 3.73 EUR Gross: 4.59 EUR

Flush mounting box. The box is made from non-halogen, self-extinguishing plastic.

The SE-2X60-G box is adapted to embed special electrical and electronic equipment. Specially enlarged interior gives the possibility to place additional elements, and the control element next to the build-up collar. The box has a serial construction that gives the possibility of combining into multiple blocks of boxes. The structure design consists of two separate elements that connect with each other through snap fasteners, which allows the placement of larger spatial elements.

Possibility of vertical or horizontal mounting.

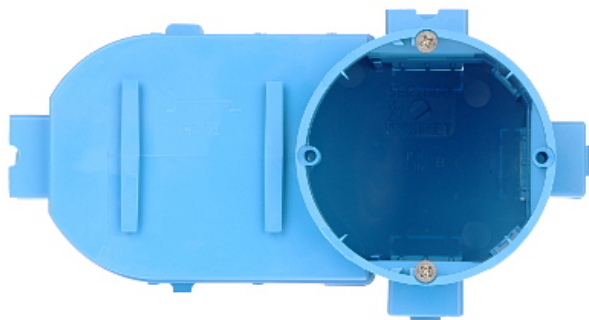


SPECIFICATION

Number of sections:	2
"Index of Protection":	IP20
Main features:	<ul style="list-style-type: none">• Flush, serial, deep, for special electrical and electronic equipment• The ability to combine boxes• flammability index : 960 °C• 4 fixing points• 2 Mounting screws - included• Guides for attaching the TS35 rail
Material:	halogen free and inflammable
Color:	Blue
Weight:	0.065 kg
Mounting holes distance:	60 mm
Dimensions:	153 x 82 x 82 mm
Manufacturer / Brand:	SIMET
Guarantee:	2 years

PRESENTATION

Front view:

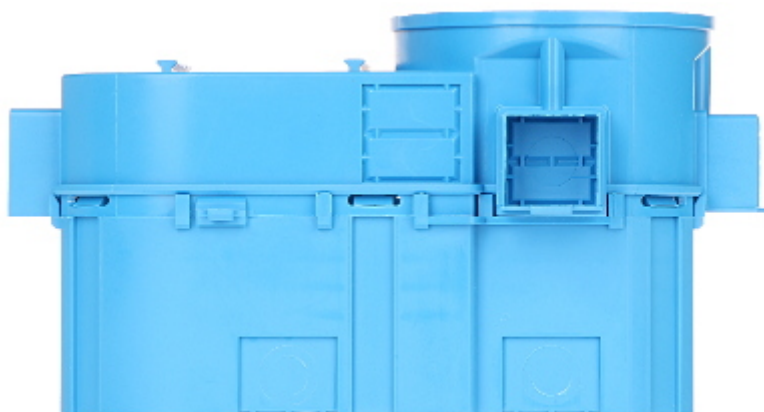


DELTA-OPTI Monika Matysiak; <https://www.delta.poznan.pl>
POL; 60-713 Poznań; Graniczna 10
e-mail: delta-opti@delta.poznan.pl; tel: +(48) 61 864 69 60

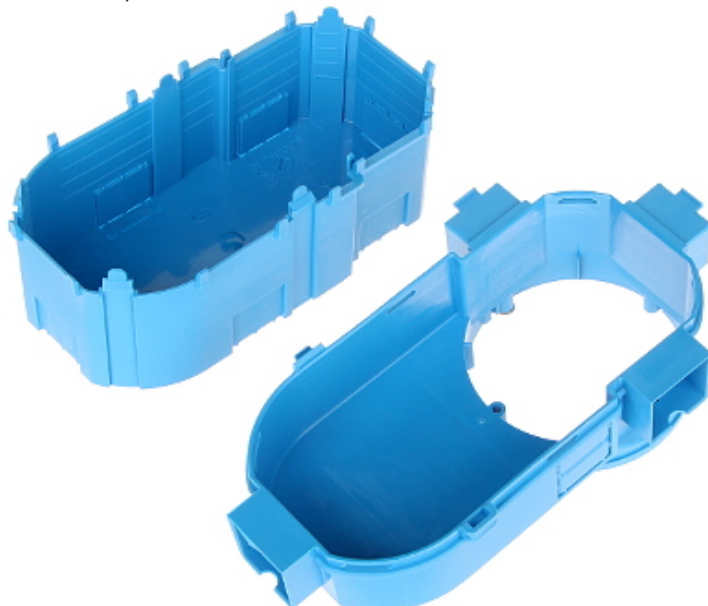
Rear view:



Side view:



Internal view, after remove the cover:



Dimensions:

