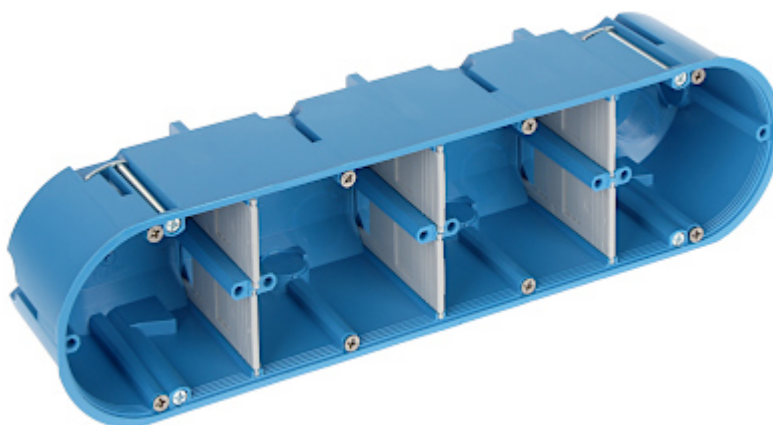


Code: P-4X60-D

FLUSH BOX 4-GANG P-4X60-D SIMET

Net: 5.43 EUR Gross: 6.68 EUR

Flush mounting box. The box is made from non-halogen, self-extinguishing plastic, intended for installation in hollow walls (plasterboard). Possibility of vertical or horizontal mounting.



SPECIFICATION

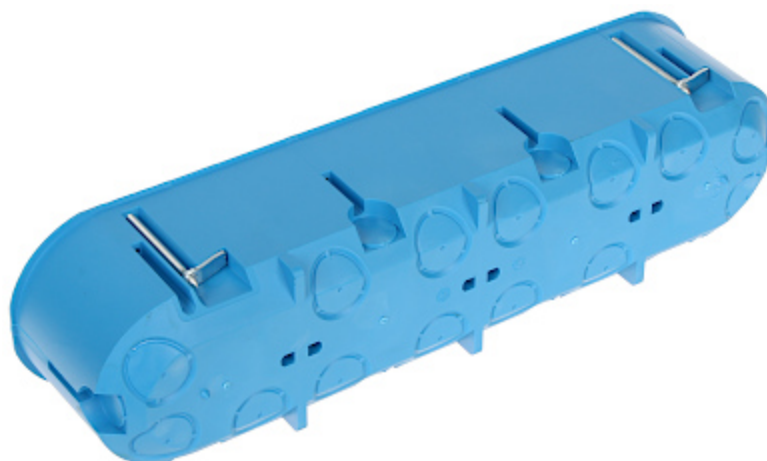
Number of sections:	4
"Index of Protection":	IP30
Main features:	<ul style="list-style-type: none">• Flush for hollow walls• stiffened construction• flammability index : 960 °C• Class V0• 4 x 4 fixing points• 8 mounting screws, 4 special screws with holders to fastening to the wall, 6 cable partitions - included
Material:	halogen free and inflammable
Color:	Blue
Weight:	0.17 kg
Mounting holes distance:	60 mm
Dimensions:	286 x 71 x 63 mm
Manufacturer / Brand:	SIMET
Guarantee:	2 years

PRESENTATION

Front view:



Rear view:



The box has removable cable partitions:

