

Code: OMEGA-23P18-6P-AI

# IP SPEED DOME CAMERA OUTDOOR **OMEGA-23P18-6P-AI** - 1080p 5.35 ... 96.3 mm

Net: **211.89 EUR** Gross: **260.62 EUR**



IP camera equipped with very good high resolution sensor. Due to above it is perfect solution for surveillance systems requiring persons or vehicles recognition.

The range of IR illumination according to the manufacturer data, depends on outer conditions (visibility - air transparency, environment, wall colors ie. scene reflectance).

For a few models of IP cameras working at  $\geq 1920 \times 1080$  resolution we recommend to use of network with 1Gb/s bandwidth.

## SPECIFICATION

Standard:	TCP/IP
Sensor:	1/2.9 " Progressive Scan CMOS
Matrix size:	2.1 Mpx
Scanning system:	Progressive
Resolution:	1920 x 1080 - 1080p , 1280 x 720 - 720p
Lens:	5.35 ... 96.3 mm
View angle:	<ul style="list-style-type: none"><li>• 57 ° ... 3.5 ° (manufacturer data)</li><li>• 50 ° ... 3.8 ° (our tests result)</li></ul>
Optical zoom:	x 18
Auto IR illuminator:	Adaptive adjusting of the IR illuminator power to the lens zoom and outdoor light conditions
Range of IR illumination:	80 m
Video output:	—
Rotation speed (manual control):	1 °/s ... 120 °/s (horizontal) , 1 °/s ... 30 °/s (vertical)
Horizontal rotation range:	360 ° continuous
Vertical rotation range:	0 ° ... 93 °
RS-485 interface:	—

DELTA-OPTI Monika Matysiak; <https://www.delta.poznan.pl>  
POL; 60-713 Poznań; Graniczna 10  
e-mail: [delta-opti@delta.poznan.pl](mailto:delta-opti@delta.poznan.pl); tel: +(48) 61 864 69 60

Number of presets:	255
Horizontal scan:	✓
Image compression method:	H.265 / H.264
Protections:	Overvoltage
Audio:	<ul style="list-style-type: none"> <li>• Microphone built-in</li> <li>• Speaker built-in</li> <li>• Bi-directional audio streaming support</li> <li>• Voice prompts in English or Chinese</li> </ul>
Alarm inputs / outputs:	—
Memory card slot:	—
Network interface:	10/100 Base-T (RJ-45)
Network protocols:	TCP/IP, ICMP, HTTP, HTTPS, FTP, DHCP, DNS, DDNS, RTP, RTSP, RTCP, NTP, SMTP
Main stream frame rate:	25 fps @ 1080p
WEB Server:	Built-in
ONVIF:	✓
Mobile phones support:	Port no.: 80 or access by a cloud (P2P) <ul style="list-style-type: none"> <li>• Android: Free application <a href="#">BitVision</a></li> <li>• iOS (iPhone): Free application <a href="#">BitVision</a></li> </ul>
Default IP address:	192.168.1.168
Default admin user / password:	admin / admin The administrator password should be set at the first start
Web browser access ports:	80
Port ONVIF:	8999
RTSP URL:	rtsp://ip_address/1/h264major - Main stream rtsp://ip_address/1/h264minor - Sub stream
Route settings:	8
OSD menu:	preset 95
Main features:	<ul style="list-style-type: none"> <li>• Intelligent Image Analysis : intrusion,</li> <li>• Intelligent Object Tracking - effective tracking range: 5 ... 45 m, speed: 3 ... 12 kmph</li> <li>• WDR - Wide Dynamic Range</li> <li>• Parking action - this function enables to locate the camera to specific position automatically if operator doesn't operate the controller for some time</li> <li>• ICR - Movable InfraRed filter</li> <li>• BLC - configurable Back Light Compensation</li> <li>• Auto White Balance</li> <li>• AGC - Automatic Gain Control</li> <li>• IR illuminator optimization</li> <li>• Mirror - Mirror image</li> <li>• Motion Detection - Split the screen into zones 16 x 12</li> </ul>
Power supply:	<ul style="list-style-type: none"> <li>• PoE (802.3at)</li> <li>• 12 V DC / 3 A (power adapter included)</li> </ul>
Housing:	Speed Dome, Metal
Color:	White + Black
"Index of Protection":	IP66
Operation temp:	-40 °C ... 70 °C
Weight:	1.5 kg (with bracket)
Dimensions:	200 x 246 x 136 mm (with bracket)
Supported languages:	Polish, English, Czech, French, Greek, Spanish, Dutch, German, Portuguese, Russian, Turkish, Italian



DELTA-OPTI Monika Matysiak; <https://www.delta.poznan.pl>  
 POL; 60-713 Poznań; Graniczna 10  
 e-mail: delta-opti@delta.poznan.pl; tel: +(48) 61 864 69 60

Manufacturer / Brand:	OMEGA
Guarantee:	2 years

## PRESENTATION

Small dimensions camera:



Bottom view:



Camera and bracket dimensions:



Camera connectors:



In the kit:



## OUR TESTS

DELTA-OPTI Monika Matysiak; <https://www.delta.poznan.pl>  
 POL; 60-713 Poznań; Graniczna 10  
 e-mail: delta-opti@delta.poznan.pl; tel: +(48) 61 864 69 60

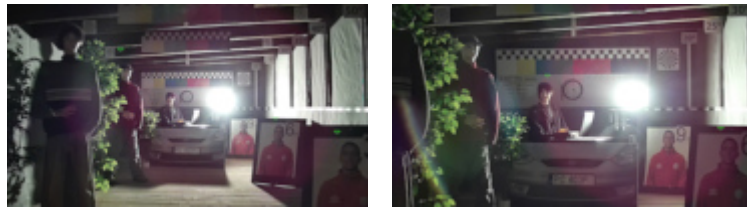
Camera image at artificial illumination (about 30Lux):



Camera image at night conditions with internal built-in IR illuminator on:



Camera image at direct strong light opposite to camera:



## PACKAGE

Dimensions (L x W x H): 0x0x0 mm	Gross Weight: 0 kg
----------------------------------	--------------------