

Code: SD6CE225U-HNI

IP SPEED DOME CAMERA OUTDOOR **SD6CE225U-HNI** - 1080p 4.8 ... 120 mm DAHUA

Net: **4 092.00 PLN** Gross: **5 033.16 PLN**

IP camera equipped with very good high resolution sensor. Due to above it is perfect solution for surveillance systems requiring persons or vehicles recognition.

Built-in IR illuminator allows to operate at night conditions, and vari-focal lens with wide range of view angle adjustment enables optimal set the view field of camera to all conditions. The range of IR illumination according to the manufacturer data, depends on outer conditions (visibility - air transparency, environment, wall colors ie. scene reflectance).

For a few models of IP cameras working at $\geq 1920 \times 1080$ resolution we recommend to use of network with 1Gb/s bandwidth.

The "Starlight" series cameras provide a clear color image even at very poor lighting.



SPECIFICATION

| | |
|----------------------------------|--|
| Standard: | TCP/IP |
| Sensor: | 1/2.8 " SONY Starvis™ Back-illuminated CMOS |
| Matrix size: | 2.1 Mpx |
| Resolution: | 1920 x 1080 - 1080p 1280 x 960 - 1.3 Mpx 1280 x 720 - 720p 704 x 576 - D1 |
| Scanning system: | Progressive |
| Lens: | 4.8 ... 120 mm |
| View angle: | • 63 ° ... 2.6 ° (manufacturer data) • 56 ° ... 3.1 ° (our tests result) |
| Optical zoom: | x 25 |
| Digital zoom: | x 16 |
| Range of IR illumination: | 200 m |
| S/N ratio: | > 55 dB (AGC off) |
| Video output: | 1 Vpp / 75 Ω |
| Preset rotation speed: | max. 300 °/s (horizontal) max. 200 °/s (vertical) |
| Rotation speed (manual control): | 0.1 °/s ... 200 °/s (horizontal) 0.1 °/s ... 120 °/s (vertical) |

DELTA-OPTI Monika Matysiak; <https://www.delta.poznan.pl>
POL; 60-713 Poznań; Graniczna 10
e-mail: delta-opti@delta.poznan.pl; tel: +(48) 61 864 69 60

| | |
|--------------------------------|--|
| Horizontal rotation range: | 360 ° continuous |
| Vertical rotation range: | -20 ° ... 90 ° |
| RS-485 interface: | ✓ |
| Protocols: | Pelco-D, Pelco-P, DH-SD Auto detection |
| Number of presets: | 300 |
| Horizontal scan: | ✓ |
| Route settings: | 8 |
| Image compression method: | H.265+ / H.265 / H.264+ / H.264 / MJPEG |
| Bitrate: | 448 ... 8192 kbps |
| Alarm inputs / outputs: | 7 / 2 |
| Audio: | <ul style="list-style-type: none"> • External microphone input • Audio output • Bi-directional audio streaming support • Audio detection |
| Main stream frame rate: | max. 50 fps - 1080p |
| Memory card slot: | Micro SD memory cards up to 256GB support (possible local recording) |
| Network interface: | 10/100 Base-T (RJ-45) |
| Network protocols: | IPv4/IPv6, HTTP, HTTPS, SSL, TCP/IP, UDP, UPnP, ICMP, IGMP, SNMP, RTSP, RTP, SMTP, NTP, DHCP, DNS, PPPoE, DDNS, FTP, IP Filter, QoS, Bonjour, IEEE 802.1x |
| WEB Server: | Built-in, NVR compliance |
| Max. number of on-line users: | 20 |
| ONVIF: | 16.12 |
| Mobile phones support: | Port 37777 <ul style="list-style-type: none"> • Android: Free application gDMSS Plus • iOS (iPhone): Free application iDMSS Plus |
| Default IP address: | 192.168.1.108 |
| Default admin user / password: | admin / - The administrator password should be set at the first start |
| Web browser access ports: | 80, 37777 |
| PC client access ports: | 37777 |
| Mobile client access ports: | 37777 |
| Port ONVIF: | 80 |
| RTSP URL: | rtsp://admin:hasło@192.168.1.108:554/cam/realmonitor?channel=1&subtype=0 - Main stream rtsp://admin:hasło@192.168.1.108:554/cam/realmonitor?channel=1&subtype=1 - Sub stream |
| Main features: | <ul style="list-style-type: none"> • WDR - 120 dB - Wide Dynamic Range • EIS - Electronic Image Stabilization • ROI - improve the quality of selected parts of image • F-DNR (Defog) - Reduction of image noise caused by precipitation • 2D-DNR, 3D-DNR - Digital Noise Reduction • Intelligent Object Tracking • ICR - Movable InfraRed filter • AGC - Automatic Gain Control • Configurable Privacy Zones - 24 • BLC/HLC - Back Light / High Light Compensation • The camera is equipped with a built-in heater with a thermostat • IVS analysis, crossing the line (tripwire), intrusion, abandoned/missing object, face detection, heat map • Motion Detection • Sharpness - sharper image outlines • Mirror - Mirror image • Day/Night mode (color/b&w/auto) |

| | |
|------------------------|--|
| Power supply: | <ul style="list-style-type: none"> • PoE (802.3at), • 24 V AC / 3 A (power adapter included) |
| Power consumption: | ≤ 25 W |
| Housing: | Speed Dome Metal |
| Color: | White |
| Vandal-proof: | IK10 |
| "Index of Protection": | IP67 |
| Operation temp: | -40 °C ... 70 °C |
| Weight: | 6.53 kg (with bracket) |
| Dimensions: | 209 x 270 x 420 mm (with bracket) |
| Supported languages: | Polish, English, Arabic, Czech, French, Spanish, Dutch, Korean, German, Persian, Portuguese, Russian, Italian |
| Manufacturer / Brand: | DAHUA |
| Guarantee: | 3 years |

PRESENTATION

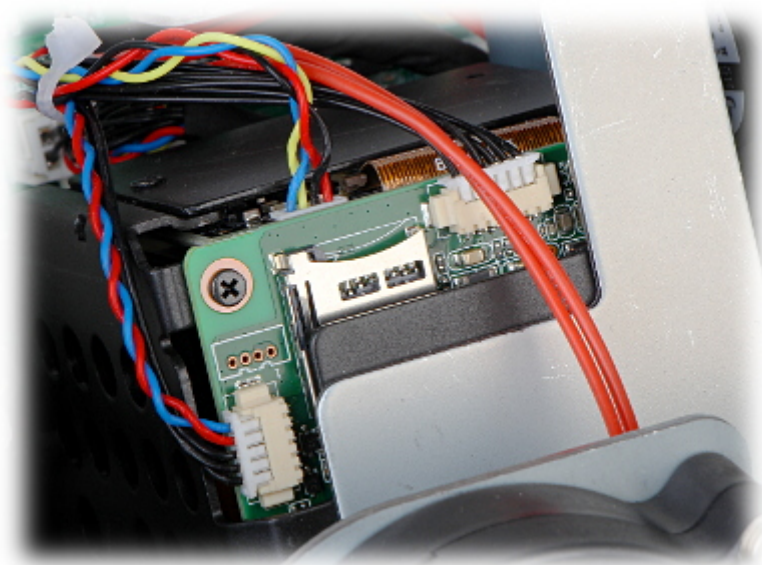
Bottom view:



Internal view (after open the enclosure):



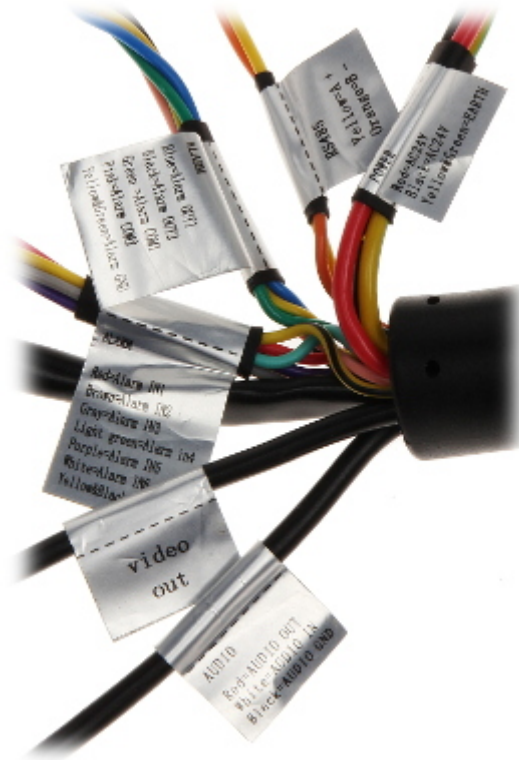
Memory card slot:



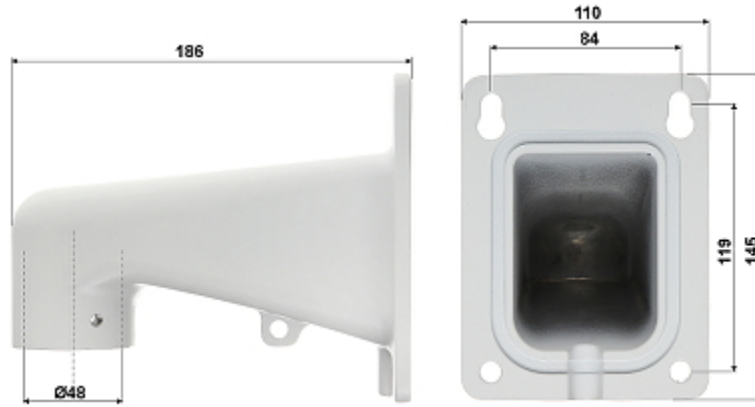
Connectors:



Connectors description:



Bracket dimensions:



In the kit:



OUR TESTS

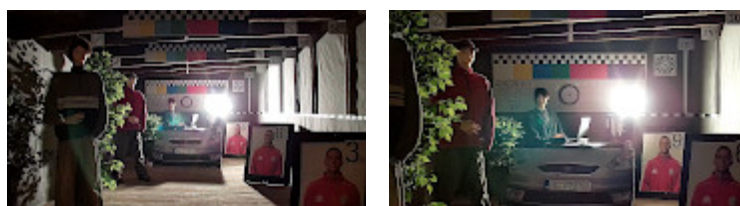
Camera image at artificial illumination (about 30Lux):



Camera image at night conditions with internal built-in IR illuminator on:



Camera image at direct strong light opposite to camera:



DELTA-OPTI Monika Matysiak; <https://www.delta.poznan.pl>
POL; 60-713 Poznań; Graniczna 10
e-mail: delta-opti@delta.poznan.pl; tel: +(48) 61 864 69 60

OUR OPINIONS



- The "Starlight" series cameras provide a clear color image even at very poor lighting.

