

Code: DS-2CE76H0T-ITMFS(2.8MM)

AHD, HD-CVI, HD-TVI, PAL CAMERA **DS-2CE76H0T-ITMFS(2.8MM)** - 5 Mpx Hikvision

Net: **70.53 EUR** Gross: **70.53 EUR**

Megapixel camera with Progressive scan CMOS sensor and AHD / HD-CVI / HD-TVI / CVBS.

The AHD / HD-CVI / HD-TVI interface allows to transmission of analog video signal via coaxial cable in max. 8 Mpx (4K) resolution. During transmission there are no delays and is maintained the original, high quality image. The change of the AHD / HD-CVI / HD-TVI / PAL standard is done with the corresponding button by keeping it pressed for approx. 5 seconds.

In the case of video transmission using a twisted pair cable and matching transformers (balun), be aware of the possibility of signal reflections and interfering signals.

Camera is according to IP67 Index of Protection norm.



SPECIFICATION

| | |
|----------------------------------|--|
| Standard: | AHD / HD-CVI / HD-TVI / CVBS |
| Sensor: | Progressive Scan CMOS |
| Matrix size: | 5 Mpx |
| Resolution: | <ul style="list-style-type: none">• 2560 x 1944 - 5 Mpx @ AHD / HD-TVI• 2560 x 1440 - 4 Mpx @ AHD / HD-CVI / HD-TVI• 1920 x 1080 - 1080p @ HD-TVI• 960 x 576 - 960H @ PAL |
| Range of IR illumination: | 30 m |
| IR illuminator power adjustment: | Automatic |
| Lens: | 2.8 mm |
| View angle: | <ul style="list-style-type: none">• 86 ° (manufacturer data)• 90 ° (our tests result) |
| Video output: | AHD / HD-CVI / HD-TVI / CVBS, 1 Vpp / 75 Ω |
| Audio: | <ul style="list-style-type: none">• Microphone built-in• Audio support via coaxial cable - HD-TVI only |
| Main features: | <ul style="list-style-type: none">• D-WDR - Wide Dynamic Range• 2D-DNR - Digital Noise Reduction• EXIR - high-efficiency infrared LEDs technology, which evenly covers the whole plan of both central vantage points of the scene as well as the corners• AGC - Automatic Gain Control• BLC - Back Light Compensation• HLC - High Light Compensation (spot)• ICR - Movable InfraRed filter• Auto White Balance• Mirror - Mirror image• Sharpness - sharper image outlines |

DELTA-OPTI Monika Matysiak; <https://www.delta.poznan.pl>
POL; 60-713 Poznań; Graniczna 10
e-mail: delta-opti@delta.poznan.pl; tel: +(48) 61 864 69 60

| | |
|------------------------|---------------------------------|
| OSD menu: | OSD menu available via recorder |
| Power supply: | 12 V DC / 310 mA |
| Power consumption: | ≤ 3.7 W |
| Housing: | Dome, Metal |
| Color: | White |
| "Index of Protection": | IP67 |
| Vandal-proof: | — |
| Operation temp: | -40 °C ... 60 °C |
| Weight: | 0.29 kg |
| Dimensions: | 90 x 83 x 79 mm |
| Manufacturer / Brand: | Hikvision |
| SAP Code: | 300613330 |
| Guarantee: | 3 years |

PRESENTATION

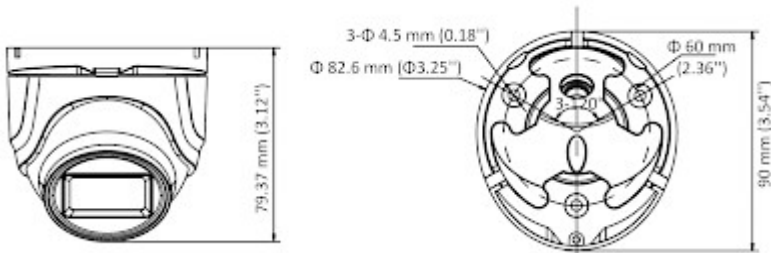
Camera is out from clamping ring:



Mounting side view:



Dimensions:



The change of the AHD / HD-CVI / HD-TVI / CVBS standard is done with the corresponding button by keeping it pressed for approx. 5 seconds:



In the kit:



OUR TESTS

DELTA-OPTI Monika Matysiak; <https://www.delta.poznan.pl>
POL; 60-713 Poznań; Graniczna 10
e-mail: delta-opti@delta.poznan.pl; tel: +(48) 61 864 69 60

AHD:

Camera image at artificial illumination (about 30Lux):



Camera image at night conditions with internal built-in IR illuminator on:



Camera image at direct strong light opposite to camera:



HD-CVI:

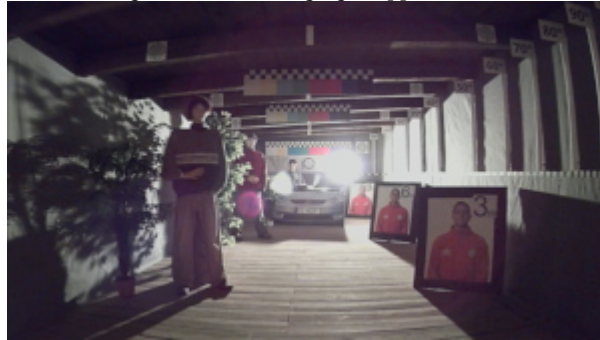
Camera image at artificial illumination (about 30Lux):



Camera image at night conditions with internal built-in IR illuminator on:



Camera image at direct strong light opposite to camera:



HD-TVI:

Camera image at artificial illumination (about 30Lux):



Camera image at night conditions with internal built-in IR illuminator on:



Camera image at direct strong light opposite to camera:



PACKAGE

| | |
|----------------------------------|--------------------|
| Dimensions (L x W x H): 0x0x0 mm | Gross Weight: 0 kg |
|----------------------------------|--------------------|



DELTA-OPTI Monika Matysiak; <https://www.delta.poznan.pl>
POL; 60-713 Poznań; Graniczna 10
e-mail: delta-opti@delta.poznan.pl; tel: +(48) 61 864 69 60