

Code: HAC-HDW1801T-Z-A-27135-S2

AHD, HD-CVI, HD-TVI, PAL CAMERA **HAC-HDW1801T-Z-A-27135-S2** - 8.3 Mpx 2.7 ... 13.5 mm - MOTOZOOM DAHUA

Net: **201.83 EUR** Gross: **201.83 EUR**

Megapixel camera with Progressive scan CMOS sensor and AHD / HD-CVI / HD-TVI / PAL.

The AHD / HD-CVI / HD-TVI interface allows to transmission of analog video signal via coaxial cable in max. 8 Mpx (4K UHD) resolution. During transmission there are no delays and is maintained the original, high quality image.

In the case of video transmission using a twisted pair cable and matching transformers (balun), be aware of the possibility of signal reflections and interfering signals. The used motozoom lens with 2.7 ... 13.5 mm focal length allows to remote view angle adjustment.

Camera is according to IP67 Index of Protection norm.



SPECIFICATION

Standard:	AHD, HD-CVI, HD-TVI, CVBS
Sensor:	Progressive Scan CMOS
Matrix size:	8.3 Mpx
Resolution:	<ul style="list-style-type: none">• AHD / HD-CVI / HD-TVI : 3840 x 2160 - 8.3 Mpx, 4K UHD• HD-CVI : 2880 x 1620 - 5 Mpx 2560 x 1440 - 3.7 Mpx• CVBS : 960 x 576 - 960H
Lens:	2.7 ... 13.5 mm - Motozoom, AutoFocus
View angle:	<ul style="list-style-type: none">• 114 ° ... 32 ° (manufacturer data)• 110 ° ... 31 ° (our tests result)
Range of IR illumination:	60 m
IR illuminator power adjustment:	Automatic
Video output:	AHD / HD-CVI / HD-TVI / CVBS - 1 Vpp / 75 Ω
Audio:	Microphone built-in - HD-CVI only

Main features:	<ul style="list-style-type: none"> • Motozoom lens, AutoFocus - The control possible only from Dahua recorders in HD-CVI mode • WDR - 120 dB - Wide Dynamic Range • 3D-DNR - Digital Noise Reduction • F-DNR (Defog) - Reduction of image noise caused by precipitation • BLC/HLC - Back Light / High Light Compensation • ICR - Movable InfraRed filter • Auto White Balance • AGC - Automatic Gain Control • D-ZOOM - Digital Zoom • Mirror - Mirror image • Privacy zones - max. 8 • Sharpness - sharper image outlines
OSD menu:	OSD menu available via DAHUA recorder
Power supply:	12 V DC / 660 mA
Power consumption:	≤ 7.9 W
Housing:	Dome, Metal
Color:	White
"Index of Protection":	IP67
Vandal-proof:	—
Operation temp:	-30 °C ... 60 °C
Weight:	0.59 kg
Dimensions:	Ø 122 x 105 mm
Manufacturer / Brand:	DAHUA
Guarantee:	3 years

PRESENTATION

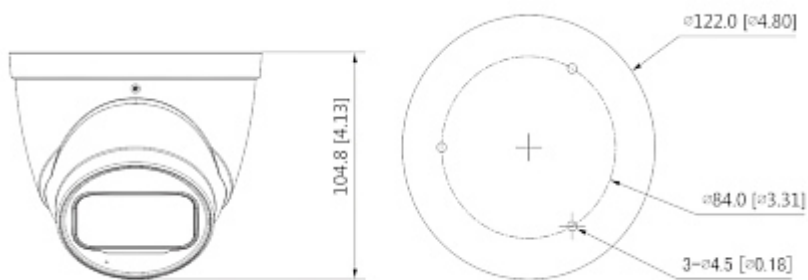
Camera is out from clamping ring:



Mounting side view:



Dimensions:



In the kit:



OUR TESTS

AHD:

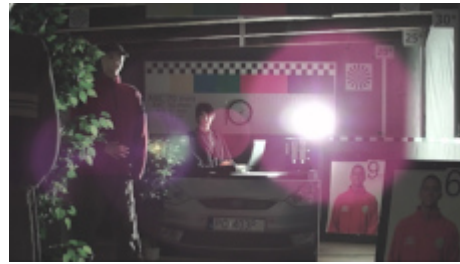
Camera image at artificial illumination (about 30Lux):



Camera image at night conditions with internal built-in IR illuminator on:



Camera image at direct strong light opposite to camera:



HD-CVI:

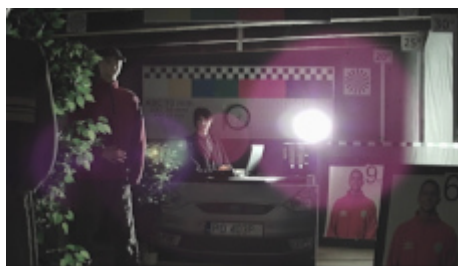
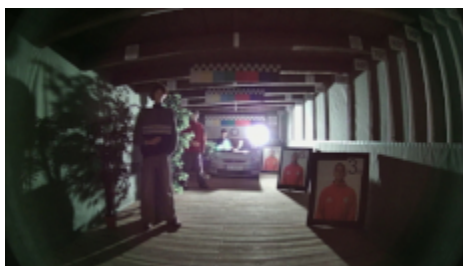
Camera image at artificial illumination (about 30Lux):



Camera image at night conditions with internal built-in IR illuminator on:



Camera image at direct strong light opposite to camera:



HD-TVI:

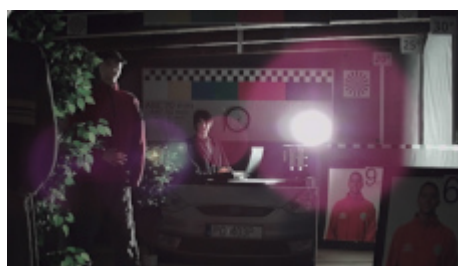
Camera image at artificial illumination (about 30Lux):



Camera image at night conditions with internal built-in IR illuminator on:



Camera image at direct strong light opposite to camera:



PACKAGE

Dimensions (L x W x H): 0x0x0 mm	Gross Weight: 0 kg
----------------------------------	--------------------