

Code: APTI-H50PC2-28W

# AHD, HD-CVI, HD-TVI, PAL CAMERA **APTI-H50PC2-28W** 2Mpx / 5Mpx 2.8 mm

Net: **23.44 EUR** Gross: **28.83 EUR**

Megapixel camera with 1/2.7" CMOS sensor and AHD / HD-CVI / HD-TVI / CVBS.

The AHD / HD-CVI / HD-TVI interface allows to transmission of analog video signal via coaxial cable in max. 8 Mpx (4K UHD) resolution. During transmission there are no delays and is maintained the original, high quality image.

In the case of video transmission using a twisted pair cable and matching transformers (balun), be aware of the possibility of signal reflections and interfering signals.

Setting the camera in PAL mode allows to obtain an image in 960H resolution. The appropriate signal format selection is done by tilting and holding the joystick for 5 s without entering to the OSD menu. Changing the signal to the NTSC in the camera causes loss of image in connected AHD recorder.

**Attention!** The camera is factory set to the resolution 2 Mpx (1080p).



## SPECIFICATION

|                                  |   |
|----------------------------------|---|
| Standard:                        | AHD, HD-CVI, HD-TVI, CVBS   |
| Sensor:                          | 1/2.7 " Progressive Scan CMOS   |
| Matrix size:                     | 5 Mpx   |
| Resolution:                      | <ul style="list-style-type: none"><li>• 2592 x 1944 - 5 Mpx @ AHD / HD-TVI @ 20 fps / 12.5 fps ;</li><li>• 2560 x 1440 - 4 Mpx @ AHD / HD-CVI / HD-TVI @ 25 fps,</li><li>• 1920 x 1080 - 1080p @ AHD / HD-CVI / HD-TVI @ 25 fps</li><li>• 960 x 576 - 960H @ PAL</li></ul>  |
| Lens:                            | 2.8 mm  |
| View angle:                      | <ul style="list-style-type: none"><li>• 95 ° (manufacturer data)</li><li>• 103 ° (our tests result)</li></ul>   |
| Range of IR illumination:        | 20 m  |
| IR illuminator power adjustment: | Automatic   |
| Video output:                    | 1 Vpp 75 Ω, AHD / HD-CVI / HD-TVI / CVBS - selectable by switch   |
| OSD menu:                        | ✓   |
| Main features:                   | <ul style="list-style-type: none"><li>• D-WDR - Wide Dynamic Range</li><li>• DNR - Digital Noise Reduction</li><li>• ICR - Movable InfraRed filter</li><li>• AGC - Automatic Gain Control</li><li>• BLC - Back Light Compensation</li><li>• Day/Night mode (color/b&amp;w/auto)</li><li>• Auto White Balance</li><li>• Sharpness - sharper image outlines</li></ul> |
| Power supply:                    | 12 V DC / 300 mA  |
| Power consumption:               | ≤ 3.6 W   |

DELTA-OPTI Monika Matysiak; <https://www.delta.poznan.pl>  
POL; 60-713 Poznań; Graniczna 10  
e-mail: [delta-opti@delta.poznan.pl](mailto:delta-opti@delta.poznan.pl); tel: +(48) 61 864 69 60

|                        |                   |
|------------------------|-------------------|
| Housing:               | Compact - Plastic |
| Color:                 | White + Black     |
| "Index of Protection": | IP66              |
| Operation temp:        | -20 °C ... 60 °C  |
| Weight:                | 0.16 kg           |
| Dimensions:            | 162 x 70 x 70 mm  |
| Supported languages:   | English           |
| Manufacturer / Brand:  | APTI              |
| Guarantee:             | 2 years           |

## PRESENTATION

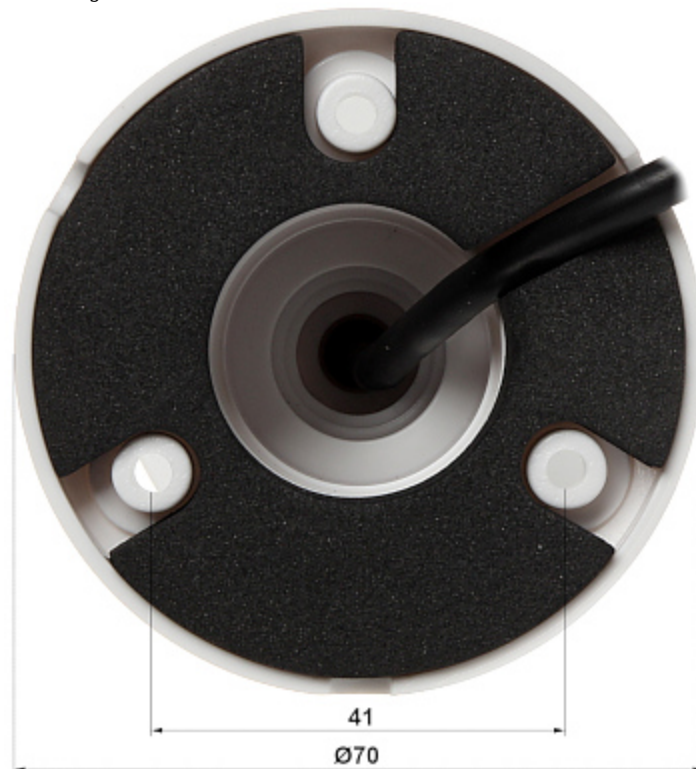
Front view:



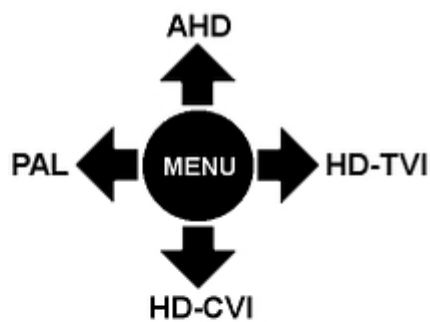
Side view:



Mounting side view:



The appropriate signal format selection is done by tilting and holding the joystick for 5 s without entering to the OSD menu. Changing the signal to the NTSC in the camera causes loss of image in connected AHD recorder:



In the kit:



DELTA-OPTI Monika Matysiak; <https://www.delta.poznan.pl>  
POL; 60-713 Poznań; Graniczna 10  
e-mail: [delta-opti@delta.poznan.pl](mailto:delta-opti@delta.poznan.pl); tel: +(48) 61 864 69 60

## OUR TESTS

AHD:

Camera image at artificial illumination (about 30Lux):



Camera image at night conditions with internal built-in IR illuminator on:



Camera image at direct strong light opposite to camera:



HD-CVI:

Camera image at artificial illumination (about 30Lux):



Camera image at night conditions with internal built-in IR illuminator on:



Camera image at direct strong light opposite to camera:



HD-TVI:

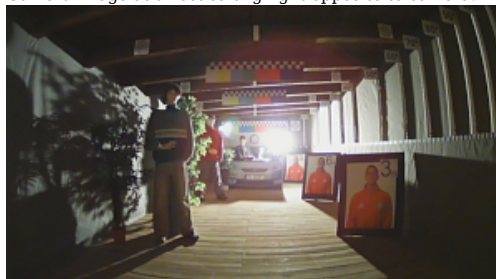
Camera image at artificial illumination (about 30Lux):



Camera image at night conditions with internal built-in IR illuminator on:



Camera image at direct strong light opposite to camera:





DELTA-OPTI Monika Matysiak; <https://www.delta.poznan.pl>  
POL; 60-713 Poznań; Graniczna 10  
e-mail: [delta-opti@delta.poznan.pl](mailto:delta-opti@delta.poznan.pl); tel: +(48) 61 864 69 60