

Code: DS-2CE16H0T-ITPFS(2.8MM)

AHD, HD-CVI, HD-TVI, PAL CAMERA **DS-2CE16H0T-ITPFS(2.8MM)** - 5 Mpx Hikvision

Net: **277.00 PLN** Gross: **340.71 PLN**

Megapixel camera with Progressive scan CMOS sensor and AHD / HD-CVI / HD-TVI / PAL.

The AHD / HD-CVI / HD-TVI interface allows to transmission of analog video signal via coaxial cable in max. 8 Mpx (4K UHD) resolution. During transmission there are no delays and is maintained the original, high quality image. The change of the AHD / HD-CVI / HD-TVI / PAL standard is done with the corresponding button by keeping it pressed for approx. 5 seconds.

In the case of video transmission using a twisted pair cable and matching transformers (balun), be aware of the possibility of signal reflections and interfering signals.

The 3-Axis integrated camera bracket has a regulation in all three planes, which allows to turn the camera to any direction. Camera is according to IP67 Index of Protection norm.



SPECIFICATION

Standard:	AHD / HD-CVI / HD-TVI / PAL
Sensor:	Progressive Scan CMOS
Matrix size:	5 Mpx
Resolution:	<ul style="list-style-type: none">• 2560 x 1944 - 5 Mpx @ AHD / HD-TVI - 20 fps,• 2560 x 1440 - 4 Mpx @ AHD / HD-CVI / HD-TVI - 25 fps• 1920 x 1080 - 1080p @ HD-TVI - 25 fps• 960 x 576 @ PAL
Lens:	2.8 mm
View angle:	<ul style="list-style-type: none">• 86 ° (manufacturer data)• 88 ° (our tests result)
Range of IR illumination:	25 m
IR illuminator power adjustment:	Automatic
Video output:	1 Vpp / 75 Ω - AHD / HD-CVI / HD-TVI / PAL, BNC socket
Audio:	Microphone built-in - Audio support via coaxial cable
OSD menu:	✓

Main features:	<ul style="list-style-type: none"> • D-WDR - Wide Dynamic Range • 2D-DNR - Digital Noise Reduction • EXIR - high-efficiency infrared LEDs technology, which evenly covers the whole plan of both central vantage points of the scene as well as the corners • BLC - Back Light Compensation • HLC - High Light Compensation (spot) • ICR - Movable InfraRed filter • AGC - Automatic Gain Control • Auto White Balance • Mirror - Mirror image • Sharpness - sharper image outlines
Power supply:	12 V DC / 310 mA
Power consumption:	≤ 3.7 W
Housing:	Compact, Plastic
Color:	White + Black
"Index of Protection":	IP67
Operation temp:	-40 °C ... 60 °C
Weight:	0.17 kg
Dimensions:	154 x 58 x 61 mm
Supported languages:	English
Manufacturer / Brand:	Hikvision
SAP Code:	300511757
Guarantee:	3 years

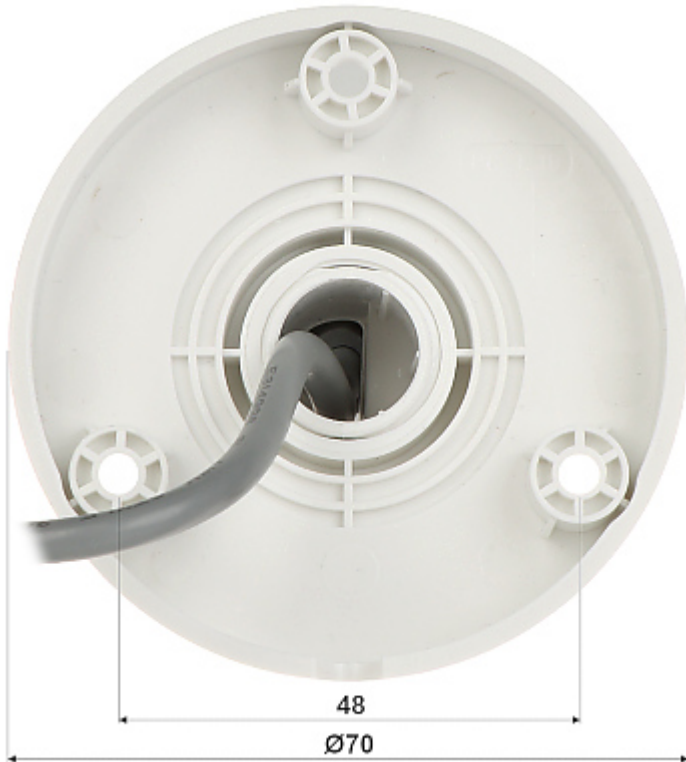
PRESENTATION



Side view:



Mounting side view:



The change of the AHD / HD-CVI / HD-TVI / PAL standard is done with the corresponding button by keeping it pressed for approx. 5 seconds:



In the kit:



OUR TESTS

AHD:

Camera image at artificial illumination (about 30Lux):



Camera image at night conditions with internal built-in IR illuminator on:



Camera image at direct strong light opposite to camera:



HD-CVI:

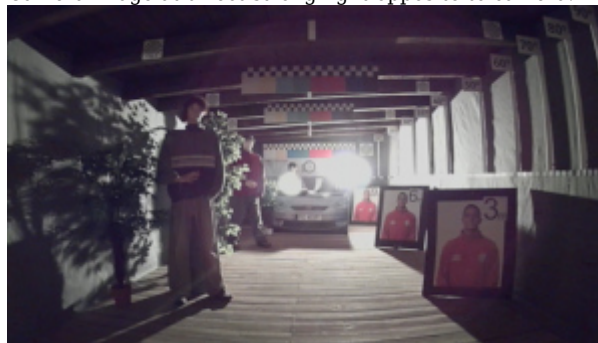
Camera image at artificial illumination (about 30Lux):



Camera image at night conditions with internal built-in IR illuminator on:



Camera image at direct strong light opposite to camera:



HD-TVI:

Camera image at artificial illumination (about 30Lux):



Camera image at night conditions with internal built-in IR illuminator on:



Camera image at direct strong light opposite to camera:



PACKAGE

Dimensions (L x W x H): 0x0x0 mm	Gross Weight: 0 kg
----------------------------------	--------------------

